

The Perennial Garden

The Perennial Garden is a showcase for hardy, drought-tolerant plants that grow well in Fresno area gardens with average care. They are able to thrive in spite of the Valley's challenging growing conditions: Full sun, summer heat and aridity, winter frost and fog, alkaline soil, and a restricted landscape watering schedule. Featured varieties are chosen for their attractive flowers and foliage, which provide color and textural interest throughout the growing season.

The Vegetable Garden

The experimental vegetable garden presents many exciting concepts for growing food crops in a beautiful and functional fashion. In addition to the vast array of vegetables grown year-round we demonstrate different methods of irrigation, protective coverings, trellising, and integrated pest management. Browse our experimental beds, experience square-foot gardening, and discover methods to encourage beneficial insects and add beauty to your garden.

All-American Selections

The All-American Selections Display Garden is one of over 200 gardens across the country, which has been developed to provide gardeners and non-gardeners alike the opportunity to view and judge for themselves the merits of the award winning vegetables and flowers. Flowers are scored on color, disease resistance, insect and weather stress, prolonged flowering, and attractiveness of blossoms, uniformity, uniqueness, and fragrance. Vegetables are evaluated for flavor, yield, appearance, texture, disease resistance, production and space efficiency, nutrition, and novelty.

The No Barriers Garden

The "No Barriers Garden" demonstrates how people who have lost some degree of physical ability may still enjoy gardening. Construction for this garden was provided by a grant from U.C. Office of Affirmative Action and the garden has been featured in the Los Angeles Times.

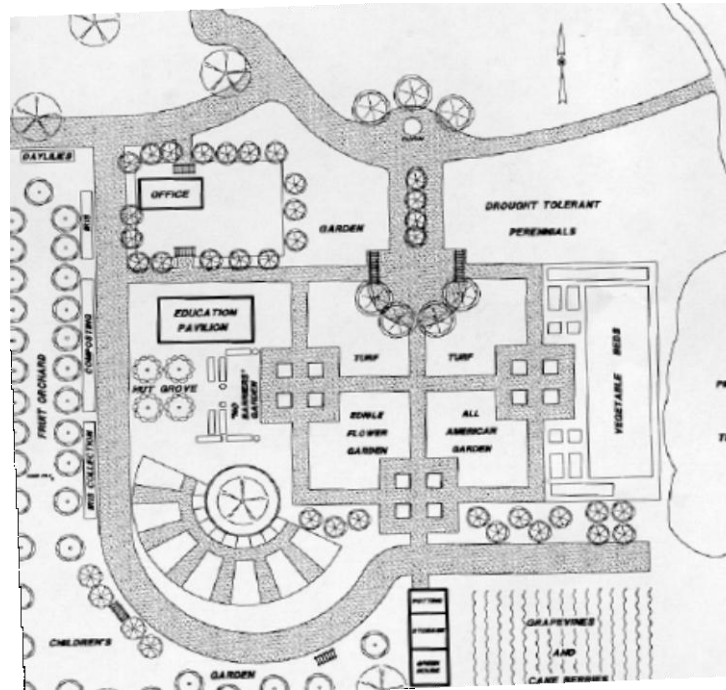
The Small Space Garden

The three main areas of this garden address the growing need for gardening in smaller garden spaces and patios.

Cottage Garden – a mixture of perennials and annuals designed to provide a profusion of color throughout the year.

Low Maintenance Garden –plants specially selected for foliage color and texture with a few low-maintenance seasonal annuals.

Patio Pot Garden – a grouping that demonstrates how potted grasses, succulents and cactus, annual color, and a small flowering tree can be successfully grown in a small space. Drip irrigation is used in both the low maintenance and patio pot gardens.



Adult Education Classes

Classes in gardening are regularly scheduled on Wednesday and Saturday mornings at the garden. They are taught by UCCE Master Gardeners and other volunteers or professionals in the horticulture industry. Classes focus on successful growing of food and ornamental plants, integrated pest management, and the value of agriculture in the San Joaquin Valley. Course schedules are available online at <http://ucanr.org/sites/mgfresno>. Class pre-registration is recommended.

Topics covered might include:

Citrus and Cultural Care
Composting
Drought Resistant Gardening
Edible Flowers
Flower-Arranging
Gardening with Children
Grape Growing
Landscape Tree Selection
Landscape Tree Care

Herbs and Lavenders
Irrigation Installation
Holiday Wreaths
Perennial Flowers and Care
Tomatoes
Integrated Pest Management
Plant Propagation
Rose Pruning and Care
Vegetable Gardening

The Sun/Shade Garden

This inviting garden, situated under a large coastal redwood, is home to plants that thrive in full shade (at the base of the tree), as well as plants that do well in both sun and shade (those around the perimeter of the tree's canopy). The plantings demonstrate how "micro-climates" and a large shade tree can make a difference in the landscape. The emphasis in this garden is on shades and textures of foliage with a few touches of color from flowering plants. A dry streambed and garden rooms accent the plantings.

The Herb Garden

The Herb Garden lies in the Southwestern portion of the Garden of the Sun. The semi-circle design around the beautiful coastal redwood represents the rays of the sun. Each ray contains a theme garden. A delightful section is the Collector's Garden, which includes plants that do well in a rock garden setting. Other theme gardens include a butterfly garden, kitchen garden, tea garden, lemon scented garden, fragrant garden, and dry flower or everlasting garden. There is visual and sensory appeal here, and most plants are drought tolerant and perfect for our valley climate.

The Children's Garden

The Children's Garden was designed for two purposes. First, it is a special place where they can explore, touch, play, and learn about gardening. Second, it is a space for demonstrating children's gardening ideas to teachers and parents. A human sun clock, Herbie the dinosaur topiary, a vine-covered maze, Peter Rabbit's garden shaped as a tangram, hop scotch, a bean tepee, sensory garden, animal named plants garden, a secret garden and a worm box round out the features of this fun spot in the garden. Citrus, loropetalum, hollyhocks, and vines serve to enclose the garden in a special place that beckons children.

Amid the Fruit, Grapes, and Berries . . .

As you stroll through the fruit, grape, and berry patches situated throughout the garden, you will find many ideas to add interest and beauty to any garden or small orchard. The grape demonstration area displays the trellising techniques, which are easily adapted to the home garden or orchard. The berries, including many thornless varieties, also show the importance of trellising and training. You'll be amazed at the large variety of plants and trees in the orchard, which will surely tantalize your taste buds and excite your imagination. The pride and joy of the orchard is the attractive espalier demonstration area (surrounding the office) where apple trees are trained using four fascinating espalier designs.

Garden of the Sun General Information

The University of California Cooperative Extension, in Fresno County, in conjunction with its Master Gardener Program has developed a one-acre food production demonstration garden at Reedy Park.

The garden includes an extensive orchard of fruit trees and vines; beds of vegetables, herbs, perennials, cut flowers, an All-American Selections Display Garden, and a compost demonstration area in a setting designed by landscape designer, Robert Truxell. Also featured in the Garden are specialty gardens for children and the physically challenged.

The Garden of the Sun has been developed through contributions from agriculture, horticulture related organizations, industry, and the support of the general public. Operational funding comes through classes and Master Gardener sponsored events. Garden maintenance is performed by Master Gardeners.

Donations to provide support for the Garden are gratefully accepted. Checks should be made payable to UC Regents and mailed to: UC Cooperative Extension, 1720 S. Maple Avenue, Fresno, CA 93702.

The Garden of the Sun is open to the public Monday, Wednesday, and Friday 9 am - 1 pm and Saturday mornings when Adult Education classes are scheduled. Master Gardener volunteers are available to answer home gardening questions.

*All Garden of the Sun programs are open to all potential participants.
For special assistance regarding our programs, please contact us.*



Garden Discovery Program

We are currently offering tours and workshops for school groups (K-8). Workshops range from composting, botany on your plate, worm composting planting seeds, etc., and are grade appropriate. Call the garden to find out more information at 559-456-4151. Leave a message for Youth Gardening.

Garden of the Sun Tours

Informal or guided tours of the garden may be arranged by called the garden. A fee is charged for guided tours. Groups are welcome to bring their lunch to eat in the garden either before or after a tour or informally during regular business hours.



A Demonstration Garden

at
Reedy Park
1750 N. Winery Avenue
Fresno, CA

Sponsored by:

University of California
Cooperative Extension
Master Gardeners
1720 S. Maple Avenue
Fresno, CA 93702



The University of California prohibits discrimination or harassment of any person in any of its programs or activities. (Complete nondiscrimination policy statement can be found at <http://ucanr.org/sites/anrstaff/files/107734.doc>) Inquiries regarding the University's equal employment opportunity policies may be directed to Linda Marie Manton, Affirmative Action Contact, University of California, Davis, Agriculture and Natural Resources, One Shields Avenue, Davis, CA 95616, (530) 752-0495

For more information or class registration,
Call UCCE at (559) 600-7285 or the
Garden of the Sun at (559) 456-4151
Or on line at: <http://ucanr.org/sites/mgfresno/>