

# Lower Leaf Surface

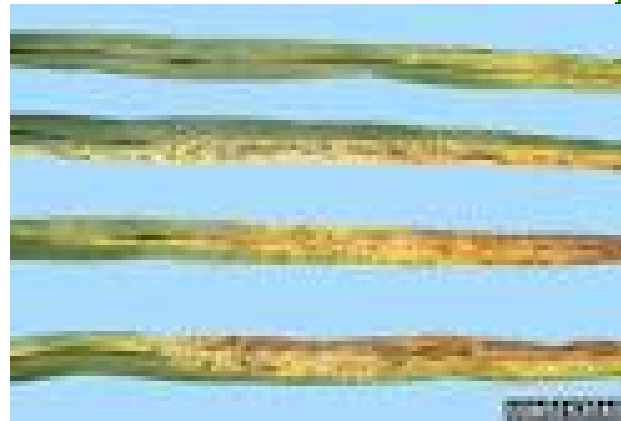
- 📖 Elm Leaf Beetle
- 📖 Spider mites
- 📖 Broad mites
- 📖 Aphids
- 📖 Psyllids
- 📖 Whiteflies
- 📖 Stink bugs
- 📖 **Lepidoptera larvae**



# Lower Leaf Surface

 Rust

 Downy Mildew



# Lower Leaf Surface



Rust

Downy Mildew





# In the Leaf



📖 **Serpentine leafminers**

📖 **Lepidoptera  
leafminers**

– Including:  
citrus leafminer



# In the Leaf



📁 Serpentine leafminers

📁 Lepidoptera  
leafminers

– Including:

citrus leafminer



# Folded/Distorted Leaves

- ❏ Cuban Laurel Thrips
- ❏ Myoporum Thrips
- ❏ Leaf-rolling/Leaf-tying Lepidoptera



# Folded/Distorted Leaves

- 📖 Cuban Laurel Thrips
- 📖 Myoporum Thrips
- 📖 Leaf-rolling/Leaf-tying Lepidoptera





# Branches/Stem



 Mealybugs

 Scales

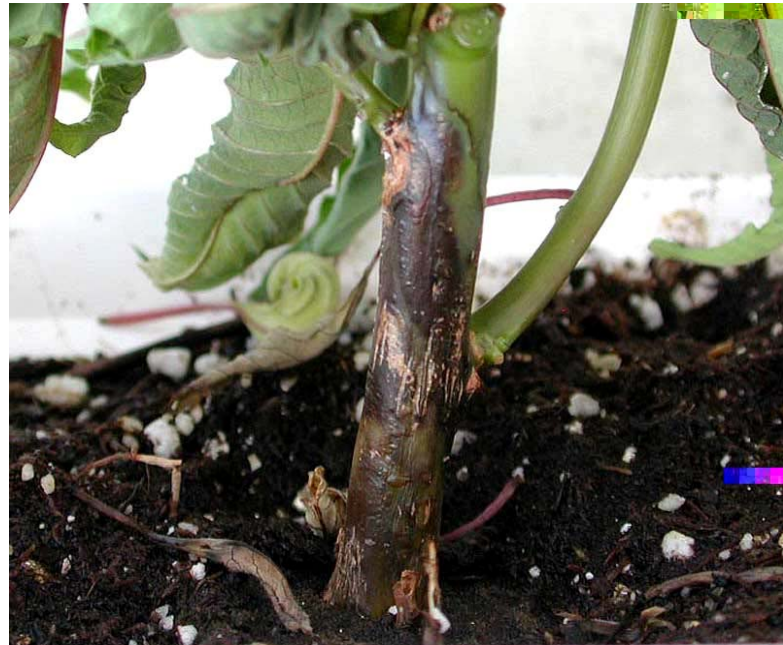
 Stink bugs





# Branches/Stem

- 📁 Rhizoctonia
- 📁 Phytophthora
- 📁 Powdery Mildew
- 📁 Bacteria
- 📁 Fusarium
- 📁 Botrytis

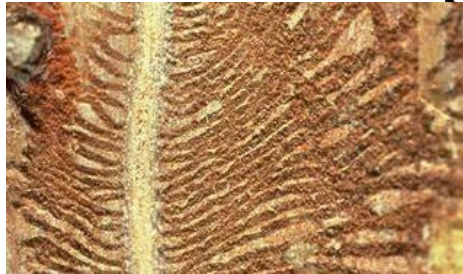


# In the Trunk

 Bark beetles

 Long-horned  
beetles

Citrus peelminer



# Lower Foliage

 Rhizoctonia

 Fungus Gnat  
Larvae

 *Duponchelia  
fulveolis*





# Lower Foliage

📖 Rhizoctonia

📖 Fungus Gnat  
Larvae

📖 *Duponchelia  
fulveolis*



# All over plant



📁 Grasshoppers

📁 Snails, slugs

📁 Aphids

📁 Lepidoptera

📁 And so on....

📁 Bacteria

📁 Botrytis



# Soil

📖 Fungus Gnat Larvae

📖 Shoreflies

📖 Moth flies

📖 Weevil larvae

📖 Dufo

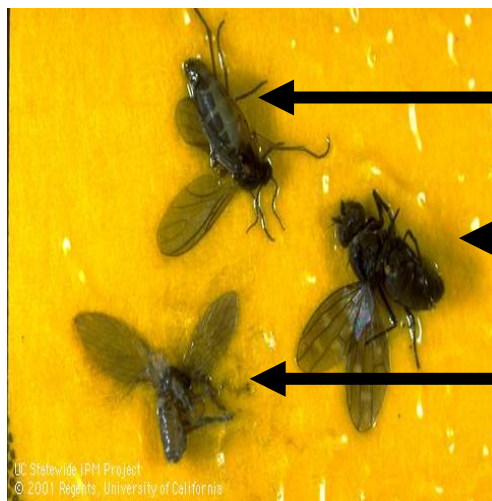
📖 Symphylans

📖 Centipedes, millipedes

📖 Springtails

📖 Ground Mealybug

📖 Ants



Fungus gnat

Shore fly

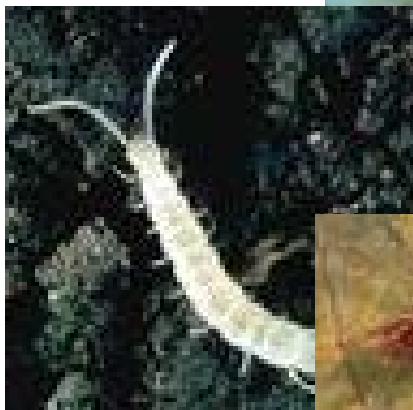
Moth fly





# Soil

- ❏ Fungus Gnat Larvae
- ❏ Shoreflies
- ❏ Moth flies
- ❏ Weevil larvae
- ❏ Dufo
- ❏ Symphylans
- ❏ Centipedes, millipedes
- ❏ Springtails
- ❏ Ground Mealybug
- ❏ Ants



# Soil



- Phytophthora
- Fusarium
- Pythium
- Rhizoctonia



# Know Your Target!





# Know Your Target!

- 📁 Complimentary equipment evaluation and calibration from Target
- 📁 Please contact Joe Schmitt or myself to schedule an appointment
- 📁 [karen.robbs@target-specialty.com](mailto:karen.robbs@target-specialty.com)
- 📁 559-708-8681



Thank you!



# Where are the targets?

