



**Council for  
Watershed Health**

# **319h Grant: San Gabriel Nurseries, Irrigated Lands, and Open Space Water Quality Improvement Project**

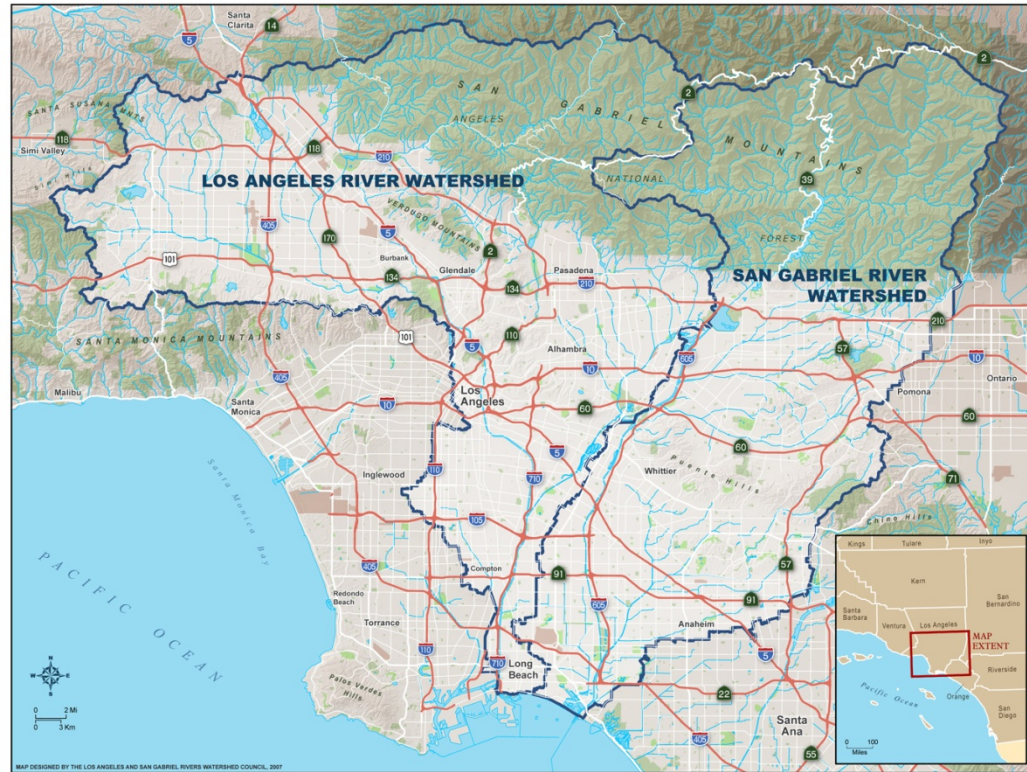
Kristy Morris, PhD  
[kristy@watershedhealth.org](mailto:kristy@watershedhealth.org)

Authors: Kristy Morris, PhD



# Who we are:

- Hub for Watershed Research and Analysis
  - Working at the intersection of research and policy
  - Driving applied research to improve policy and practice
  - Connecting diverse perspectives to address timely issues



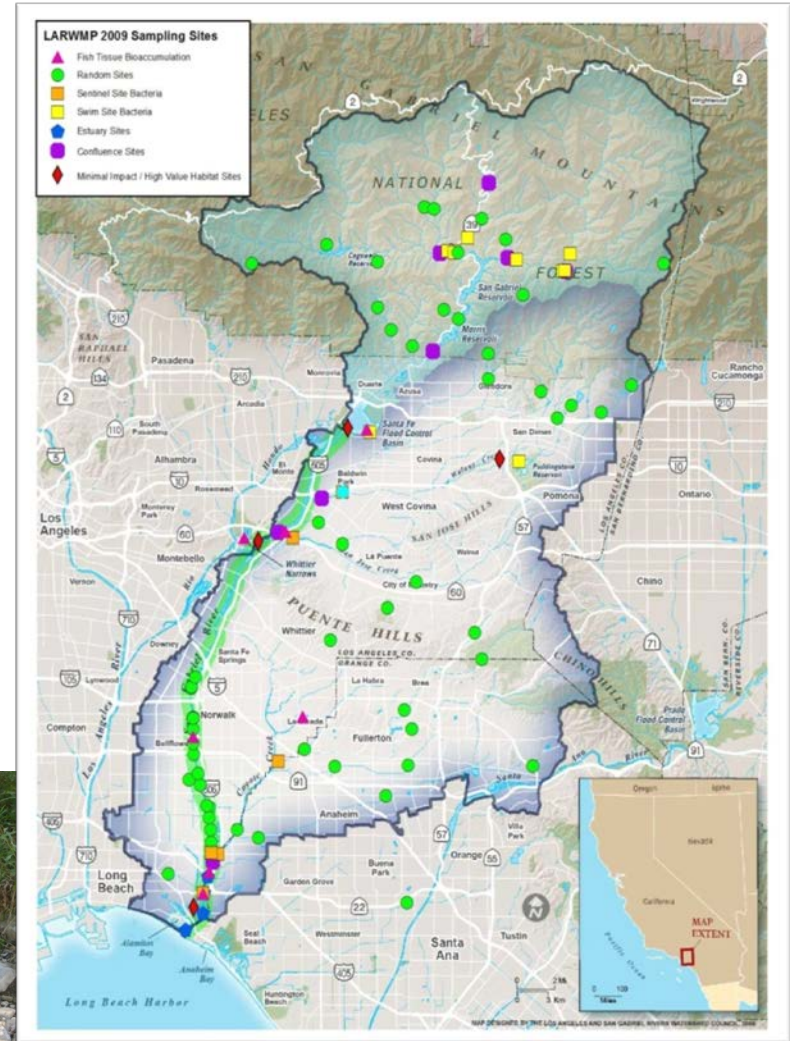
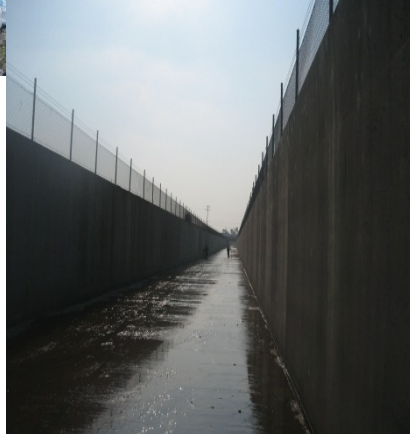


# Monitoring Projects

Los Angeles River Regional Watershed

San Gabriel River Regional Watershed

Elmer Avenue Stormwater Monitoring



# 319h Grant Proposal: San Gabriel River Nurseries, Irrigated Lands, and Open Space Water Quality Improvement Project

## **Planning/Assessment Project**

Targeted planning and assessment efforts to better focus future implementation efforts to achieve WQ goals.

## **Background:**

- 242 Acres of nurseries within the San Gabriel River Watershed
- Contributions of metals from nurseries and adjacent freeways largely unknown

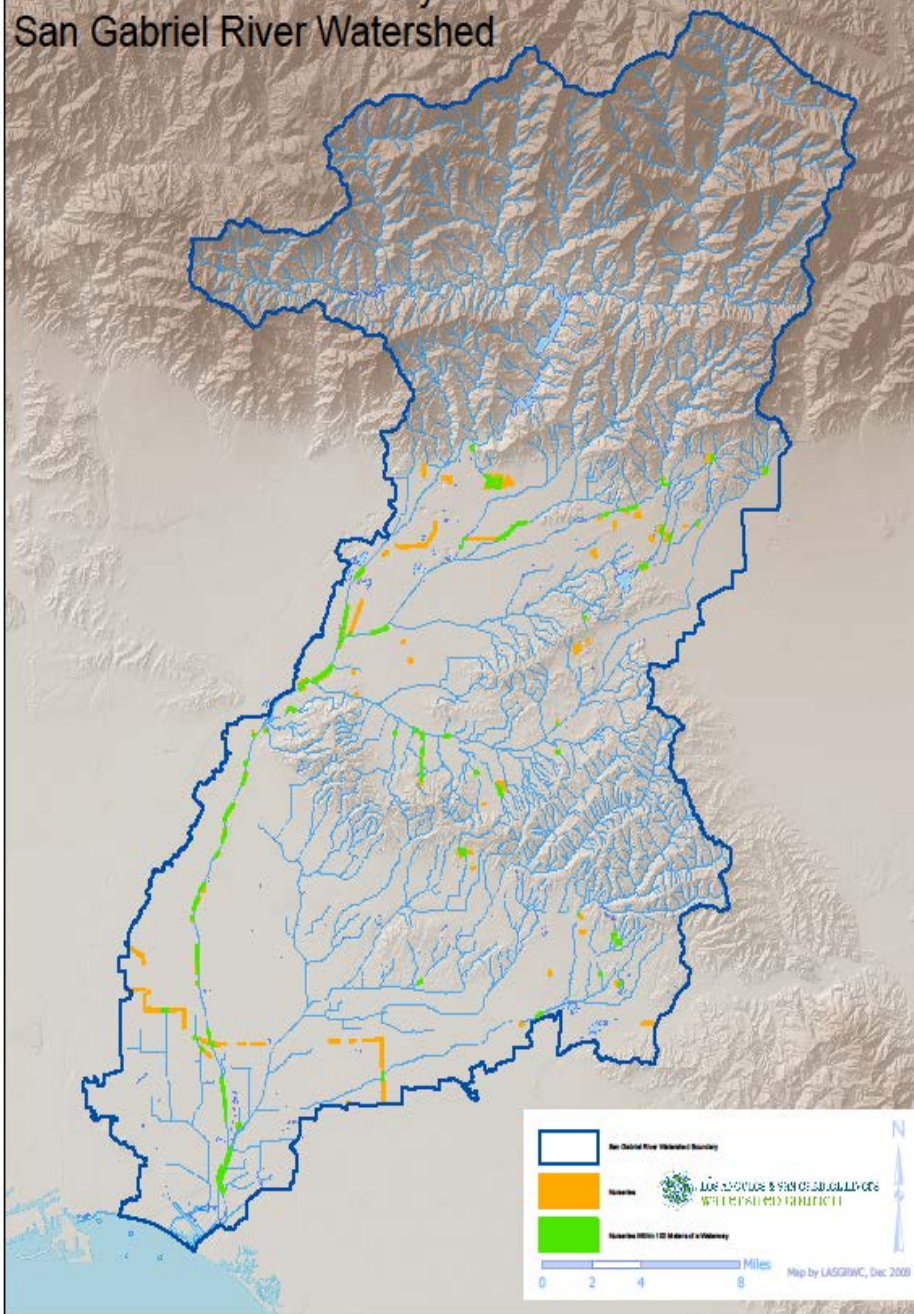
## **Preference Projects:**

San Gabriel River: Constituents: metals

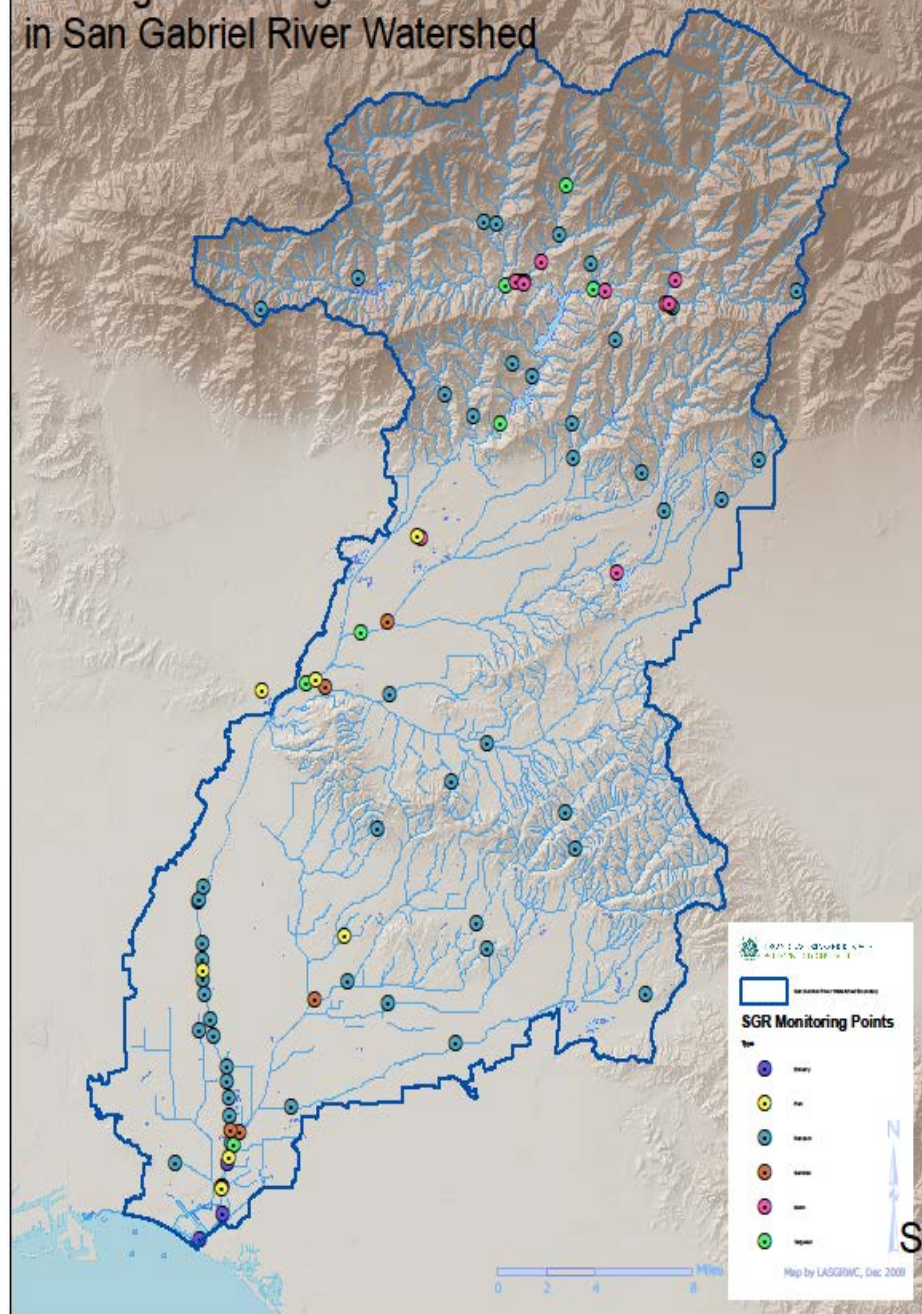
Sources: Irrigated agriculture, open space runoff



## Nurseries Near Waterways in San Gabriel River Watershed



## Existing Monitoring Sites in San Gabriel River Watershed



319h Grant:  
San Gabriel River Nurseries, Irrigated Lands, and  
Open Space Water Quality Improvement Project

## **Assisting Growers**

- Identify priority locations for BMP implementation
- Assistance with the selection and implementation of BMP's
- Evaluate the effectiveness of BMP's through water quality monitoringAdditional monitoring, training and education

**319h Grant:**  
**San Gabriel River Nurseries, Irrigated Lands, and  
Open Space Water Quality Improvement Project**

**Partners:**

- University of California Cooperation Extension
- San Gabriel River Regional Monitoring Program
- Los Angeles County Sanitation District
- Southern California Edison
- Nursery Growers Association



# Contact



**Council for  
Watershed Health**

- Kristy Morris, PhD  
Sr Water Quality Specialist  
Council for Watershed Health  
700 N. Alameda St.  
Los Angeles, CA 90012  
[www.watershedhealth.org](http://www.watershedhealth.org)
- [kristy@watershedhealth.org](mailto:kristy@watershedhealth.org)
- Ph: 213.229.9960  
Fax: 213.229.9952





# Questions?

