

Conditional Waiver of Waste Discharge Requirements for Discharges from Irrigated Lands

Jenny Newman

Los Angeles Regional Water Quality Control Board

320 West 4th Street, Suite 200
Los Angeles, CA 90013

Phone: 213-576-6691
www.waterboards.ca.gov/losangeles/

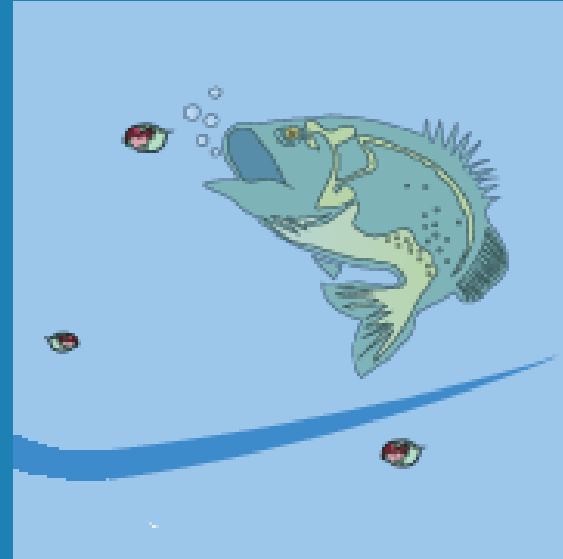
Outline of Presentation

- Introduction
- Applicability
- Enrollment
- Requirements
- Review First 5 Years of Program
- Enforcement
- Resources



Pollutants in Agriculture

- Pesticides
- Fertilizers
- Pathogens
- Sediment
- Trash



Source: UC IPM Online

- Washed into waterbodies by irrigation and rain
- Can be toxic to aquatic life and wildlife



Regulators - Water

Federal

United States EPA
Office of Water

State

California EPA
State and Regional
Water Quality Control
Boards

Local

Public Works
Watershed Protection

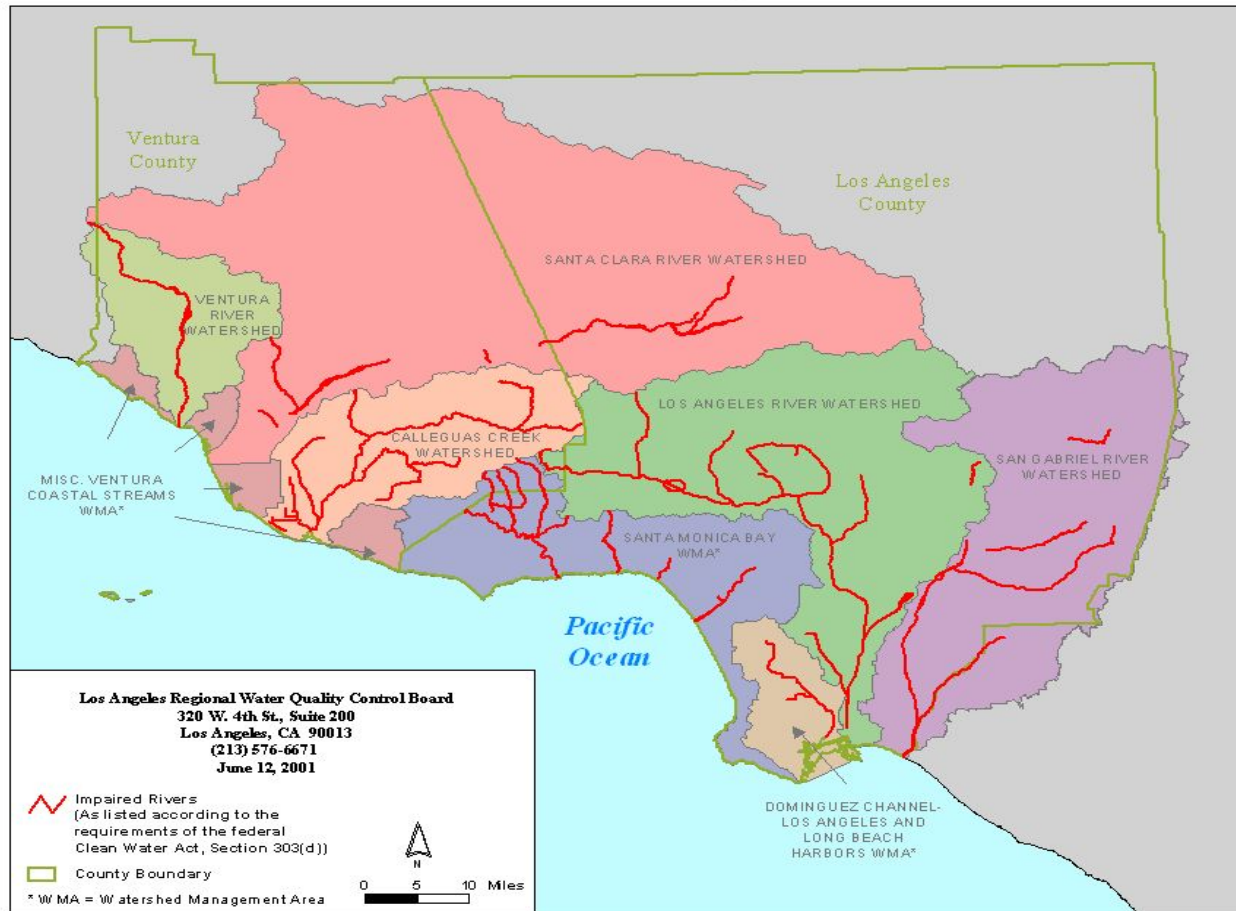


LA Regional Board

- Implement the federal Clean Water Act and the California Porter Cologne Water Quality Control Act
- Our mission: Preserve and enhance the quality of California's water resources for the benefit of present and future generations

Los Angeles Region

**Locations of Impaired Rivers in Los Angeles County and Ventura County California
With Watersheds and County Boundaries**



Background on Waiver

- Conditional Waiver is required by California law
- Adopted in November 2005 and renewed in October 2010
 - Five-year term
 - This is second term of waiver
- Goal is to improve and protect water quality and comply with California law

Applicability of Waiver

- Owners and/or operators of irrigated agriculture lands that discharge waste
 - **Irrigated agriculture lands:** nursery stock production, wholesale nurseries, vineyards, tree and row crops, greenhouses with permeable floors
 - **Discharge:** irrigation runoff, discharges to groundwater, and storm water runoff from rain
 - **Waste:** all waste substances associated with human habitation or producing, manufacturing, or processing
- Retail nurseries and “hobby growing/gardening” activities are exempt

Waiver Requirements

- ✓ Enroll
- ✓ Monitor runoff
- ✓ Develop water quality management plan
- ✓ Implement “best management practices” or BMPs
- ✓ Submit annual reports
- ✓ Complete 8 hours of education
- ✓ Pay annual fee

Enrollment Options

1. Enroll as individual

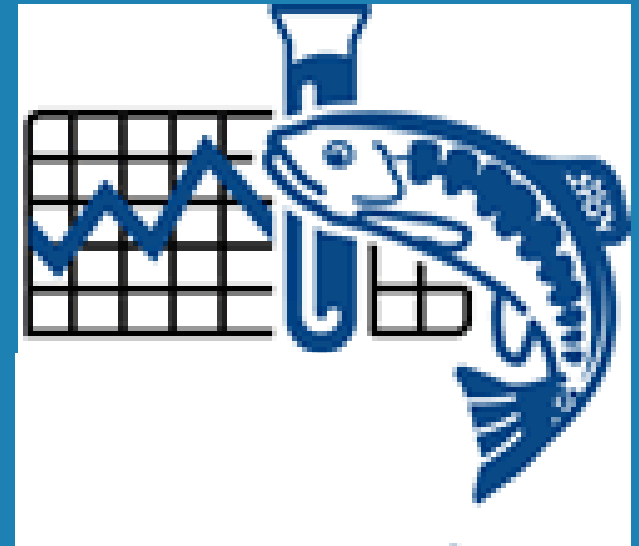
- Fees: approx \$300-\$400/year for <10 acres
- Enrollment documents
 - Notice of Intent
 - Monitoring and Reporting Program Plan
 - Quality Assurance Project Plan
- Monitoring, analysis, and reporting

2. Enroll as member of group

- Fees depend on number of group members
- Enrollment and monitoring conducted by group
- Nursery Growers Association (NGA) has a group in LA County
 - NGA is not a regulator – just formed a group to reduce costs

Water Quality Monitoring

- General Constituents to be monitored:
 - Nutrients, Pesticides, Metals, Toxicity
- Edge of field monitoring
- Groups can combine locations
- 4 sample events per year
- Annual monitoring reports



Water Quality Management Plan

- Required if monitoring shows water quality benchmarks are exceeded
- Growers develop plan and chose BMPs to implement
- Approved by Executive Officer



BMP for fertilizer storage. Source: UCCE



Education Requirements

- Must address BMPs and water quality
- Executive Officer approval required
- Look for announcements and **GO**
- If you know of a group who would like to sponsor an educational program – let us know

Review of first 5 years of Conditional Waiver Program

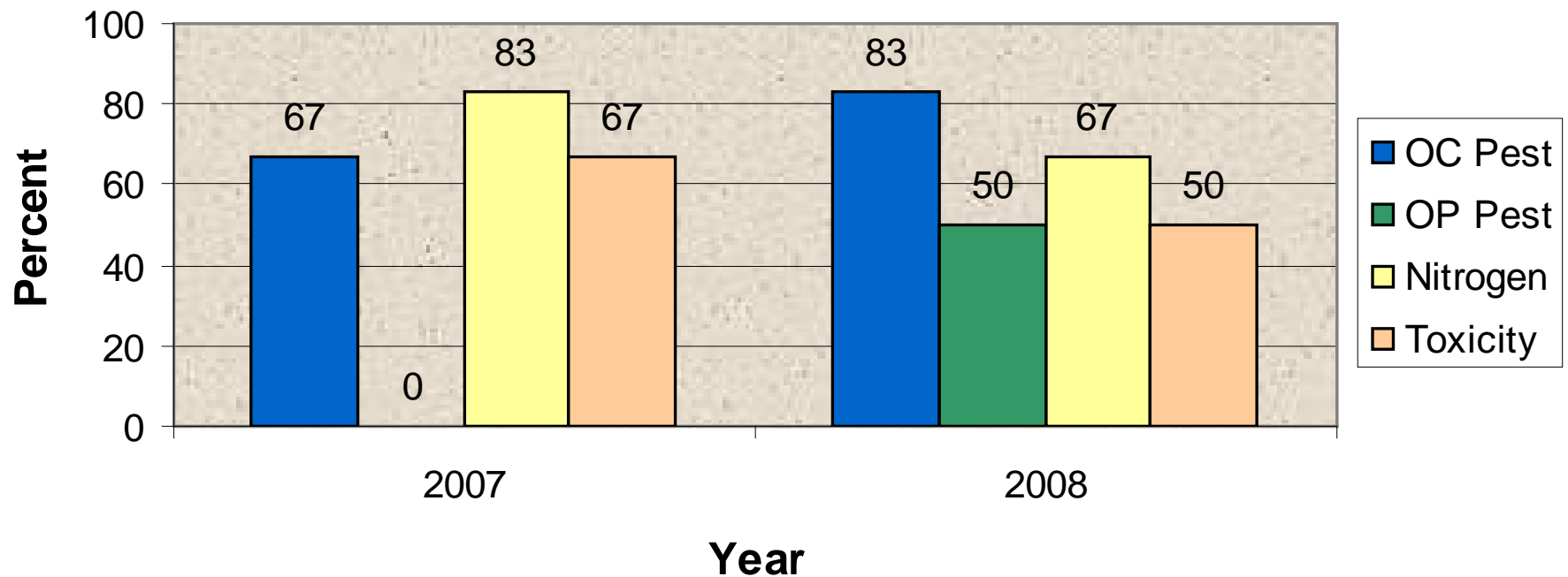


Existing NGA Monitoring

Watershed	Number of Sampling Locations
Los Angeles River	6
San Gabriel River	7
Dominguez Channel	2
Santa Monica Bay	3

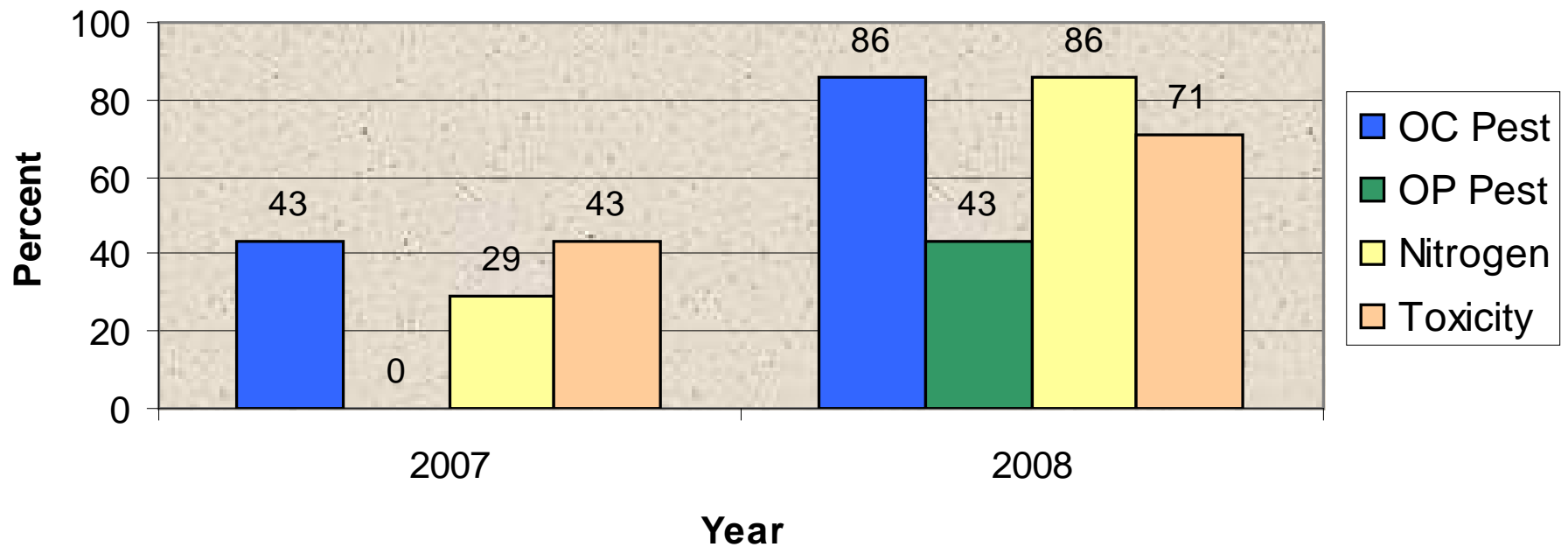
Water Quality Monitoring - Results

Los Angeles River Watershed



Water Quality Monitoring - Results

San Gabriel River Watershed



Potential Effects of Nutrient and Pesticide Loading



Excessive algae growth



Toxicity

Existing Water Quality Management Plan

- NGA developed a WQMP in 2009 based on water quality benchmark exceedances
- Plan to implement BMPs at all sites
- LA Regional Board expects WQMP to be expanded and fully implemented in this waiver term



Enforcement Actions

- Notices of Violation to 700 LA County growers who did not enroll in first waiver term
- Administrative Civil Liability Complaints to three LA County growers for \$32,100
- LA Regional Board will continue to enforce

Available Resources

- Regional Board staff is readily available to help guide growers through the program
- Other agencies and organizations can provide help and money
- Sign up for the LA Regional Board mailing list or e-mail list to receive notifications and information on the program

Contact Information

- Jenny Newman
 - Phone: 213-576-6691
jnewman@waterboards.ca.gov
- Yanjie Chu
 - Phone: 213-576-6681
ychu@waterboards.ca.gov