

# STANISLAUS COUNTY

## Agricultural Crop Report

### 2010





The 2010 Stanislaus County Agricultural Crop is dedicated to

**Cynthia Darmstandler**

October 4, 1955—May 14, 2011



Cynthia Darmstandler was born and raised in Hollywood, California. She lived in Oakdale with her husband Tom and has two sons, Justin and Brent. Cynthia loved spending time with her family and of course, her lovable Pomeranians Kona, Pookie and Zara at their home away from home at Pine Mountain Lake. She also started a very successful dog treat business called Kona's Chips.

Cynthia began her career with the Stanislaus County Agricultural Commissioner's Office in January of 1990. Even though she would tell you she was a "Hollywood Girl" at heart, she quickly became a loyal advocate and friend of agriculture. In her position as the Department's Confidential Assistant, she was a highly respected employee who always represented the Department and the Agricultural Commissioner as a trusted spokesperson. Cynthia's talented and dedicated service to the department for over 20 years was exemplified by her longstanding contribution and leadership as the Secretary to the Agricultural Advisory Board and in conceiving the idea of artistically presenting, via PowerPoint presentation, the Annual Stanislaus County Agricultural Crop Report.

Cynthia's talents, creativity and vibrant personality will be sorely missed by everyone who knew her here in the Agricultural Community.

# *Stanislaus County Department of Agriculture*

## 2010 Annual Crop Report

The Honorable Board of Supervisors  
County of Stanislaus

**William O'Brien, Vice-Chairman**  
**Vito Chiesa**  
**Terry Withrow**  
**Dick Monteith, Chairman**  
**Jim DeMartini**

**Supervisor District 1**  
**Supervisor District 2**  
**Supervisor District 3**  
**Supervisor District 4**  
**Supervisor District 5**

**Richard W. Robinson**  
**Chief Executive Officer**

**Gary Caseri**  
**Agricultural Commissioner/Sealer**

August 2, 2011

TO: Karen Ross, Secretary  
California Department of Food and Agriculture

The Honorable Board of Supervisors of Stanislaus County

William O'Brien, Vice-Chair, First District  
Vito Chiesa, Second District  
Terry Withrow, Third District  
Dick Monteith, Chair, Fourth District  
Jim DeMartini, Fifth District

Richard W. Robinson, Chief Executive Officer

I am pleased to submit, in accordance with Section 2279 of the California Food and Agricultural Code, Stanislaus County's Annual Crop and Livestock Report for 2010. This report provides a statistical description of Stanislaus County's agricultural production. I must emphasize that this report represents **gross values** of agricultural commodities and does not reflect production costs or profits.

The value of agricultural commodities produced last year in Stanislaus County increased by 11% to \$2,572,434,000. This represents an increase of \$259,765,000 from the 2009 gross production value of \$2,312,669,000. This is primarily attributed to an increase in Field Crop prices and acreage along with Milk prices starting to rebound from a rough 2009 year. The most notable increase was the Milk category that increased by \$136,589,000 or a 30% gain, and the Silage category that increased by \$32,160,000 or a 43% increase. On the downside, Almonds suffered the most significant loss, which can be attributed to a considerable drop in yield per acre due to wet spring weather.

I wish to express my appreciation to agricultural producers, industry representatives and public agencies who have cooperated in providing data for this report. I would also like to express sincere thanks to the Agricultural Commissioner staff, especially Agricultural Inspector Michael Terra who compiled, designed and prepared the information for publication.

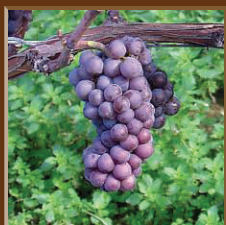
Respectfully,



GARY CASERI  
Agricultural Commissioner/Sealer  
Department of Agriculture  
Stanislaus County



ROGER DUNCAN  
County Director  
UC Cooperative Extension  
Stanislaus County



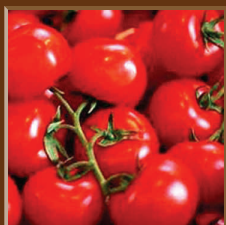
# Fruit & Nut Crops

	Year	Harvested Acres	Per Acre	Total	Unit	Per Unit	Total
Almond Meat	2010	144,690	0.77	111,000	Ton	\$ 3,518.00	\$ 390,498,000
	2009	134,003	1.00	134,000	Ton	\$ 3,400.00	\$ 455,600,000
Almond Hulls	2010			222,000	Ton	\$ 82.00	\$ 18,204,000
	2009			268,000	Ton	\$ 86.00	\$ 23,048,000
Almond Shells	2010			111,000	Ton	\$ 20.00	\$ 2,220,000
	2009			134,000	Ton	\$ 15.00	\$ 2,010,000
Apples	2010	1,137	9.62	10,900	Ton	\$ 925.00	\$ 10,083,000
	2009	807	12.03	9,700	Ton	\$ 898.00	\$ 8,711,000
Apricots	2010	5,621	9.56	53,700	Ton	\$ 380.00	\$ 20,406,000
	2009	4,429	8.94	39,600	Ton	\$ 372.00	\$ 14,731,000
Cherries	2010	3,626	3.18	11,500	Ton	\$ 4,148.00	\$ 47,702,000
	2009	2,554	2.94	7,500	Ton	\$ 3,460.00	\$ 25,950,000
Citrus*	2010	428	9.62	4,100	Ton	\$ 1050.00	\$ 4,305,000
	2009	430	9.62	4,100	Ton	\$ 844.00	\$ 3,460,000
Grapes, All	2010	10,680			Ton		\$ 29,718,000
	2009	10,602			Ton		\$ 43,199,000
<i>Red Varieties</i>	2010	6,301	7.03	44,300	Ton	\$ 337.00	\$ 14,929,000
	2009	6,253	11.59	72,500	Ton	\$ 375.00	\$ 27,187,000
<i>White Varieties</i>	2010	4,379	7.23	31,600	Ton	\$ 468.00	\$ 14,789,000
	2009	4,349	8.63	37,500	Ton	\$ 427.00	\$ 16,012,000
Peaches, All	2010	8,060			Ton		\$ 54,897,000
	2009	7,877			Ton		\$ 66,700,000
<i>Cling</i>	2010	7,325	23.26	170,000	Ton	\$ 293.00	\$ 49,810,000
	2009	6,998	23.87	167,000	Ton	\$ 320.00	\$ 53,440,000
<i>Freestone</i>	2010	735	7.68	5,640	Ton	\$ 902.00	\$ 5,087,000
	2009	879	17.03	15,000	Ton	\$ 884.00	\$ 13,260,000
Walnuts	2010	32,035	1.88	60,200	Ton	\$ 1,931.00	\$ 116,246,000
	2009	29,628	2.04	60,400	Ton	\$ 1,890.00	\$ 114,156,000
Miscellaneous*	2010	1,722			Acre		\$ 9,595,000
	2009	1,514			Acre		\$ 9,176,000
<b>TOTAL</b>	<b>2010</b>	<b>207,999</b>					<b>\$ 703,874,000</b>
	<b>2009</b>	<b>191,844</b>					<b>\$ 766,741,000</b>

\* Citrus includes: Grapefruit, Lemons, Oranges, Pomelos and Tangerines (all prices and yields averaged together)

\* Miscellaneous includes: Berries, Chestnuts, Figs, Kiwi, Nectarines, Olives, Pears, Pecans, Persimmons, Pistachios, Plums, Pluots and Pomegranates.





# Vegetable Crops

	Year	Harvested Acres	Per Acre	Total	Unit	Per Unit	Total
Beans, Succulent	2010	8,750	2.00	17,500	Ton	\$ 500.00	\$ 8,750,000
	2009	5,486	2.10	11,520	Ton	\$ 660.00	\$ 7,603,000
Broccoli	2010	7,666	3.00	23,000	Ton	\$ 440.00	\$ 10,120,000
	2009	4,974	5.00	24,870	Ton	\$ 400.00	\$ 9,948,000
Cauliflower	2010	756	3.50	2,650	Ton	\$ 500.00	\$ 1,325,000
	2009	686	4.50	3,090	Ton	\$ 500.00	\$ 1,545,000
Melons, All	2010	1,773					\$ 14,095,000
	2009	1,868					\$ 8,977,000
<i>Cantaloupe</i>	2010	1,523	14.38	21,900	Ton	\$ 583.00	\$ 12,768,000
	2009	1,400	15.00	21,000	Ton	\$ 350.00	\$ 7,350,000
<i>Honeydew</i>	2010	150	16.0	2,400	Ton	\$ 232.00	\$ 557,000
	2009	200	14.0	2,800	Ton	\$ 300.00	\$ 840,000
<i>Melons, Other*</i>	2010	100	34.70	3,500	Ton	\$ 220.00	\$ 770,000
	2009	268	12.25	3,280	Ton	\$ 240.00	\$ 787,000
Pumpkins	2010	181	12.72	2,300	Ton	\$ 110.00	\$ 253,000
	2009	153	14.54	2,220	Ton	\$ 196.00	\$ 435,000
Spinach	2010	6,792	14.74	100,000	Ton	\$ 150.00	\$ 15,000,000
	2009	5,257	17.45	91,700	Ton	\$ 118.00	\$ 10,821,000
Squash, All	2010	2,189	7.00	15,300	Ton	\$ 210.00	\$ 3,213,000
	2009	1,547	15.00	23,200	Ton	\$ 200.00	\$ 4,640,000
Sweet Potatoes	2010	1,430	25.50	36,500	Ton	\$ 500.00	\$ 18,250,000
	2009	1,225	26.40	32,340	Ton	\$ 361.00	\$ 11,675,000
Tomatoes, All	2010	39,137					\$ 147,554,000
	2009	28,671					\$ 121,988,000
<i>Fresh</i>	2010	6,516	16.19	105,000	Ton	\$ 466.00	\$ 48,930,000
	2009	4,434	15.61	69,200	Ton	\$ 598.00	\$ 41,382,000
<i>Processing</i>	2010	32,621	47.24	1,541,000	Ton	\$ 64.00	\$ 98,624,000
	2009	24,237	40.57	983,000	Ton	\$ 82.00	\$ 80,606,000
Miscellaneous*	2010	3,305					\$ 25,703,000
	2009	2,259					\$ 31,312,000
<b>TOTAL</b>	<b>2010</b>	<b>71,979</b>					<b>\$ 244,263,000</b>
	<b>2009</b>	<b>52,126</b>					<b>\$ 208,944,000</b>

\* Melons, Other includes: Musk and Watermelon

\* Miscellaneous includes: Arugula, Artichoke, Asparagus, Beets, Bok Choy, Brussels Sprout, Cabbage, Cactus Leaf, Carrot, Celeriac, Celery, Chicory, Chinese Green, Chive, Cilantro, Collard, Cucumber, Dikon, Dandelion, Dill, Eggplant, Endive, Fennel, Garlic, Herb, Kale,, Kohlrabi, Leek, Lettuce, Mint, Mustard, Onion, Oregano, Parsley, Parsnip, Peas, Pepper, Potato, Radicchio, Radish, Rosemary, Sage, Salsify, Spice, Sweet Basil, Swiss Chard, Tomatillo, Turnip and Watercress.



# Field Crops

	Year	Harvested Acres	Per Acre	Total	Unit	Per Unit	Total
<b>Beans, Dried All</b>	2010	29,155					\$ 42,373,000
	2009	18,713					\$ 31,201,000
<i>Black-eyes</i>	2010	2,624	1.42	3,700	Ton	\$ 740.00	\$ 2,738,000
	2009	1,684	1.25	2,100	Ton	\$ 800.00	\$ 1,680,000
<i>Baby Limas</i>	2010	4,658	1.35	6,300	Ton	\$ 788.00	\$ 4,964,000
	2009	2,995	1.22	3,700	Ton	\$ 960.00	\$ 3,552,000
<i>Large Limas</i>	2010	20,117	1.38	27,800	Ton	\$ 1,135.00	\$ 31,553,000
	2009	12,912	1.34	17,300	Ton	\$ 1,380.00	\$ 23,874,000
<i>Beans, Dried Other</i>	2010	1,756	1.14	2,000	Ton	\$ 830.00	\$ 1,660,000
	2009	1,122	1.12	1,260	Ton	\$ 890.00	\$ 1,121,000
<i>Bean Straw</i>	2010			29,155	Ton	\$ 50.00	\$ 1,458,000
	2009			24,360	Ton	\$ 40.00	\$ 974,000
<b>Hay, Alfalfa</b>	2010	45,788	6.73	308,000	Ton	\$ 133.00	\$ 40,964,000
	2009	41,810	7.21	301,000	Ton	\$ 121.00	\$ 36,421,000
<b>Hay, Other*</b>	2010	59,244	3.39	201,000	Ton	\$ 91.00	\$ 18,291,000
	2009	45,345	3.66	166,000	Ton	\$ 95.00	\$ 15,770,000
<b>Pasture, Irrigated</b>	2010	33,700			Acre	\$ 160.00	\$ 5,392,000
	2009	33,700			Acre	\$ 165.00	\$ 5,561,000
<b>Rangeland</b>	2010	441,000			Acre	\$ 30.00	\$ 13,230,000
	2009	441,000			Acre	\$ 35.00	\$ 15,435,000
<b>Rice</b>	2010	1,600	4.10	6,500	Ton	\$ 340.00	\$ 2,210,000
	2009	1,600	4.26	6,800	Ton	\$ 320.00	\$ 2,176,000
<b>Silage, All</b>	2010	152,156					\$ 107,598,000
	2009	143,709					\$ 75,438,000
<i>Other*</i>	2010	57,917	15.59	903,000	Ton	\$ 27.00	\$ 24,381,000
	2009	58,744	11.58	680,000	Ton	\$ 21.00	\$ 14,280,000
<i>Corn</i>	2010	88,732	27.19	2,413,000	Ton	\$ 34.00	\$ 82,042,000
	2009	80,505	28.91	2,327,000	Ton	\$ 26.00	\$ 60,502,000
<i>Sudan</i>	2010	5,507	9.70	53,400	Ton	\$ 22.00	\$ 1,175,000
	2009	4,460	6.68	29,800	Ton	\$ 22.00	\$ 656,000

\* Hay, Other includes: Alfalfa/Oat Blend, Oat, Sudan, Wheat, and Winter Forage

\* Silage, Other includes: Alfalfa (1 cutting), Oats, Sorghum/Milo, Triticale, Wheat and Winter Forage



# Field Crops (Cont.)

	Year	Harvested Acres	Per Acre	Total	Unit	Per Unit	Total
<b>Wheat, All</b>	2010	3,032					\$ 2,300,000
	2009	2,395					\$ 1,175,000
<i>Wheat, Grain</i>	2010	3,032	3.06	9,300	Ton	\$ 172.00	\$ 1,600,000
	2009	2,395	3.07	7,350	Ton	\$ 100.00	\$ 735,000
<i>Wheat, Straw</i>	2010			14,000	Ton	\$ 50.00	\$ 700,000
	2009			11,000	Ton	\$ 40.00	\$ 440,000
<b>Miscellaneous*</b>	2010	2,886			Acre		\$ 1,082,000
	2009	2,200			Acre		\$ 1,117,000
<b>TOTAL</b>	2010	<b>768,561</b>					<b>\$ 233,440,000</b>
	2009	<b>730,472</b>					<b>\$ 184,294,000</b>

\* Miscellaneous includes: Barley, Orchard Grass, Ryegrass, Safflower, Sugar Beets and Teff Grass.



# Other Agriculture

	Year	Total	Unit	Per Unit	Total
<b>Firewood</b>	2010	49,000	Cord	\$ 150.00	\$ 7,350,000
	2009	33,000	Cord	\$ 140.00	\$ 4,620,000
<b>Fuel (Cogeneration)*</b>	2010	318,000	Ton	\$ 40.00	\$ 12,720,000
	2009	203,000	Ton	\$ 45.00	\$ 9,135,000
<b>Compost &amp; Worm Castings*</b>	2010	143,000	Ton	\$ 32.00	\$ 4,576,000
	2009	143,000	Ton	\$ 34.00	\$ 4,862,000
<b>Aquaculture*</b>	2010	339,000	Lb	\$ 2.95	\$ 1,000,000
	2009	349,000	Lb	\$ 2.87	\$ 1,002,000
<b>TOTAL</b>	2010	<b>849,000</b>			<b>\$ 25,646,000</b>
	2009	<b>728,000</b>			<b>\$ 19,619,000</b>

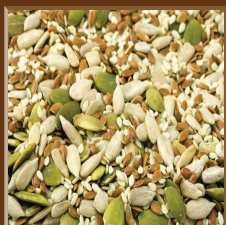
\* Firewood includes: Orchard prunings and removal for firewood (recorded in dry tons)

\* Fuel (Cogeneration) includes: Orchard prunings and orchard removal for fuel (recorded in dry tons)

\* Compost & Worm Castings includes: All wood and green waste recycling.

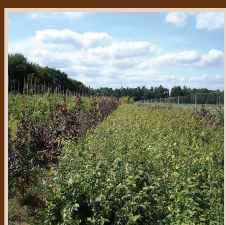
\* Aquaculture includes: Bluegill, Brown Bullhead, Channel Catfish, Largemouth Bass, Redear Sunfish and White Sturgeon.





# Seed Crops

	Year	Harvested Acres	Per Acre	Total	Unit	Per Unit	Total
Field Crop	2010	428	1.64	702	Ton	\$ 840.00	\$ 590,000
	2009	716	1.70	1,210	Ton	\$ 937.00	\$ 1,134,000
Other	2010	132	1.92	253	Ton	\$ 210.00	\$ 53,000
	2009	51	1.90	97	Ton	\$ 200.00	\$ 19,000
<b>TOTAL</b>	<b>2010</b>	<b>560</b>					<b>\$ 643,000</b>
	<b>2009</b>	<b>767</b>					<b>\$ 1,153,000</b>



# Nursery Products

	Year	Field Acres	Quantity Sold	Unit	Per Unit	Total
Deciduous Fruit & Nut Trees/Vines	2010	1049	11,486,000	Ea.	\$ 6.75	\$ 77,531,000
	2009	975	11,344,000	Ea.	\$ 5.12	\$ 58,081,000
Ornamental Trees & Shrubs	2010	454	1,997,000	Ea.	\$ 9.49	\$ 18,952,000
	2009	484	1,874,000	Ea.	\$ 9.62	\$ 18,028,000
Miscellaneous*	2010	594				\$ 17,880,000
	2009	763				\$ 20,686,000
<b>TOTAL</b>	<b>2010</b>	<b>2,097</b>				<b>\$ 114,363,000</b>
	<b>2009</b>	<b>2,222</b>				<b>\$ 96,795,000</b>

\* Miscellaneous includes: Christmas Trees, Turf, Evergreen Fruit & Nut Shrubs, Perennials and Vegetable Transplants.



# Organic Products

	Year	Acres	Total
All Organic Products	2010	3,963	\$ 8,000,000
	2009	4,944	\$ 15,000,000



# Apiary Products

	Year	Total	Unit	Per Unit	Total
Beeswax*	2010	446,000	Lb	\$ 2.00	\$ 892,000
	2009	425,000	Lb	\$ 2.00	\$ 850,000
Honey*	2010	3,820,000	Lb	\$ 1.81	\$ 6,914,000
	2009	3,639,000	Lb	\$ 1.76	\$ 6,405,000
Pollination	2010	289,380	Col	\$ 140.00	\$ 40,513,000
	2009	268,000	Col	\$ 147.00	\$ 39,396,000
Queen Bees	2010	22,200	Ea.	\$ 14.00	\$ 311,000
	2009	14,000	Ea.	\$ 14.00	\$ 196,000
<b>TOTAL</b>	<b>2010</b>				<b>\$ 48,630,000</b>
	<b>2009</b>				<b>\$ 46,847,000</b>

\* Honey and Beeswax are based off of 18,639 resident colonies plus the value of the 289,380 colonies during pollination season.





# Livestock and Poultry

	Year	Number of Head	Total Live Weight	Unit	Per Unit	Total
<b>Cattle &amp; Calves, All</b>	2010	203,840				\$ 167,329,000
	2009	204,000				\$ 131,076,000
<i>Beef Feeders</i>	2010	85,610	501,000	Cwt	\$ 116.00	\$ 58,116,000
	2009	85,680	428,000	Cwt	\$ 99.00	\$ 42,372,000
<i>Beef Slaughter</i>	2010	16,310	106,000	Cwt	\$ 64.00	\$ 6,784,000
	2009	16,320	75,000	Cwt	\$ 58.00	\$ 4,350,000
<i>Dairy Slaughter</i>	2010	53,000	795,000	Cwt	\$ 55.00	\$ 43,725,000
	2009	53,040	663,000	Cwt	\$ 46.00	\$ 30,498,000
<i>Dairy Replacement</i>	2010	48,920		Ea.	\$ 1,200.00	\$ 58,704,000
	2009	48,960		Ea.	\$ 1,100.00	\$ 53,856,000
<b>Sheep &amp; Lambs</b>	2010	1,629	1950	Cwt	\$ 46.00	\$ 89,700
	2009	850	1100	Cwt	\$ 75.00	\$ 82,500
<b>Hogs &amp; Pigs</b>	2010	33,950	38,280	Cwt	\$ 60.00	\$ 2,297,000
	2009	35,200	40,280	Cwt	\$ 67.00	\$ 2,699,000
<b>Chickens, All</b>	2010	185,058,000				\$ 308,041,000
	2009	178,262,000				\$ 282,424,000
<i>Chickens</i>	2010	51,175,000	291,697,000	Lb	\$ 0.62	\$ 180,852,000
	2009	47,857,000	271,825,000	Lb	\$ 0.66	\$ 179,404,000
<i>Chicks</i>	2010	133,883,000		Ea.	\$ 0.95	\$ 127,189,000
	2009	130,405,000		Ea.	\$ 0.79	\$ 103,020,000
<b>Turkeys, All</b>	2010	8,894,000				\$ 72,050,000
	2009	8,020,000				\$ 43,239,000
<i>Turkeys</i>	2010	2,905,000	76,576,000	Lb	\$ 0.84	\$ 64,324,000
	2009	1,836,000	53,519,000	Lb	\$ 0.66	\$ 35,323,000
<i>Poults</i>	2010	5,989,000		Ea.	\$ 1.29	\$ 7,726,000
	2009	6,184,000		Ea.	\$ 1.28	\$ 7,916,000
<b>Squab</b>	2010	529,576		Ea.	\$ 3.19	\$ 1,689,000
	2009	548,646		Ea.	\$ 3.55	\$ 1,948,000
<b>Game Birds*</b>	2010	111,000		Ea.	\$ 11.51	\$ 1,278,000
	2009	118,000		Ea.	\$ 12.30	\$ 1,451,000
<b>Goats, Meat</b>	2010	1,200	84,000	Lb	\$ 1.40	\$ 118,000
	2009	1,400	98,000	Lb	\$ 1.40	\$ 137,000
<b>TOTAL</b>	2010					\$ 552,892,000
	2009					\$ 463,056,000

\* Game Birds include: Ducks, Geese, Pheasant, Partridge and Quail





# Livestock and Poultry Products

	Year	Total	Unit	Per Unit	Total
<b>Milk, All</b>	2010	40,354,000			\$ 598,840,000
	2009	39,339,000			\$ 462,251,000
<i>Market</i>	2010	34,032,000	Cwt	\$ 14.87	\$ 506,056,000
	2009	33,888,000	Cwt	\$ 11.67	\$ 395,473,000
<i>Manufacturing</i>	2010	6,293,000	Cwt	\$ 14.56	\$ 91,626,000
	2009	5,422,000	Cwt	\$ 12.13	\$ 65,769,000
<i>Milk, Goat</i>	2010	28,868	Cwt	\$ 40.10	\$ 1,158,000
	2009	28,831	Cwt	\$ 34.98	\$ 1,009,000
<b>Eggs, Chicken Market</b>	2010	32,220,000	Doz	\$ 1.00	\$ 32,220,000
	2009	31,453,000	Doz	\$ 1.16	\$ 36,485,000
<b>Eggs, Turkey Hatching</b>	2010	2,243,000	Ea.	\$ 0.95	\$ 2,131,000
	2009	3,233,000	Ea.	\$ 0.79	\$ 2,554,000
<b>Eggs, Quail*</b>	2010	1,080,000	10 Pack	\$ 1.30	\$ 1,404,000
	2009	1,925,000	10 Pack	\$ 1.50	\$ 2,888,000
<b>Eggs, Duck</b>	2010	5,475	Doz	\$ 3.00	\$ 16,430
	2009	Not Listed In 2009			
<b>Wool</b>	2010	13,110	Lb	\$ 1.15	\$ 15,080
	2009	5,950	Lb	\$ 0.90	\$ 5,355
<b>Manure</b>	2010	931,642	Ton	\$ 6.50	\$ 6,056,000
	2009	910,625	Ton	\$ 6.63	\$ 6,037,000
<b>TOTAL</b>	2010				\$ 640,683,000
	2009				\$ 510,220,000

\* Eggs, Quail: 2009 numbers were adjusted due to mathematical error





# Summary of Categories

	Year	Harvested Acreage	Estimated Value
Fruit and Nut Crops	2010	207,999	\$ 703,874,000
	2009	191,844	\$ 766,741,000
Vegetable Crops	2010	71,979	\$ 244,263,000
	2009	52,126	\$ 208,944,000
Field Crops	2010	768,561	\$ 233,440,000
	2009	730,472	\$ 184,294,000
Other Agriculture	2010	—	\$ 25,646,000
	2009	—	\$ 19,619,000
Seed Crops	2010	560	\$ 643,000
	2009	767	\$ 1,153,000
Nursery Products	2010	2,097	\$ 114,363,000
	2009	2,222	\$ 96,795,000
Organic Products	2010	3,963	\$ 8,000,000
	2009	4,944	\$ 15,000,000
Apiary Products	2010	—	\$ 48,630,000
	2009	—	\$ 46,847,000
Livestock and Poultry	2010	—	\$ 552,892,000
	2009	—	\$ 463,056,000
Livestock and Poultry Products	2010	—	\$ 640,683,000
	2009	—	\$ 510,220,000
<b>TOTAL</b>	2010	1,055,159	\$ 2,572,434,000
	2009	982,375	\$ 2,312,669,000

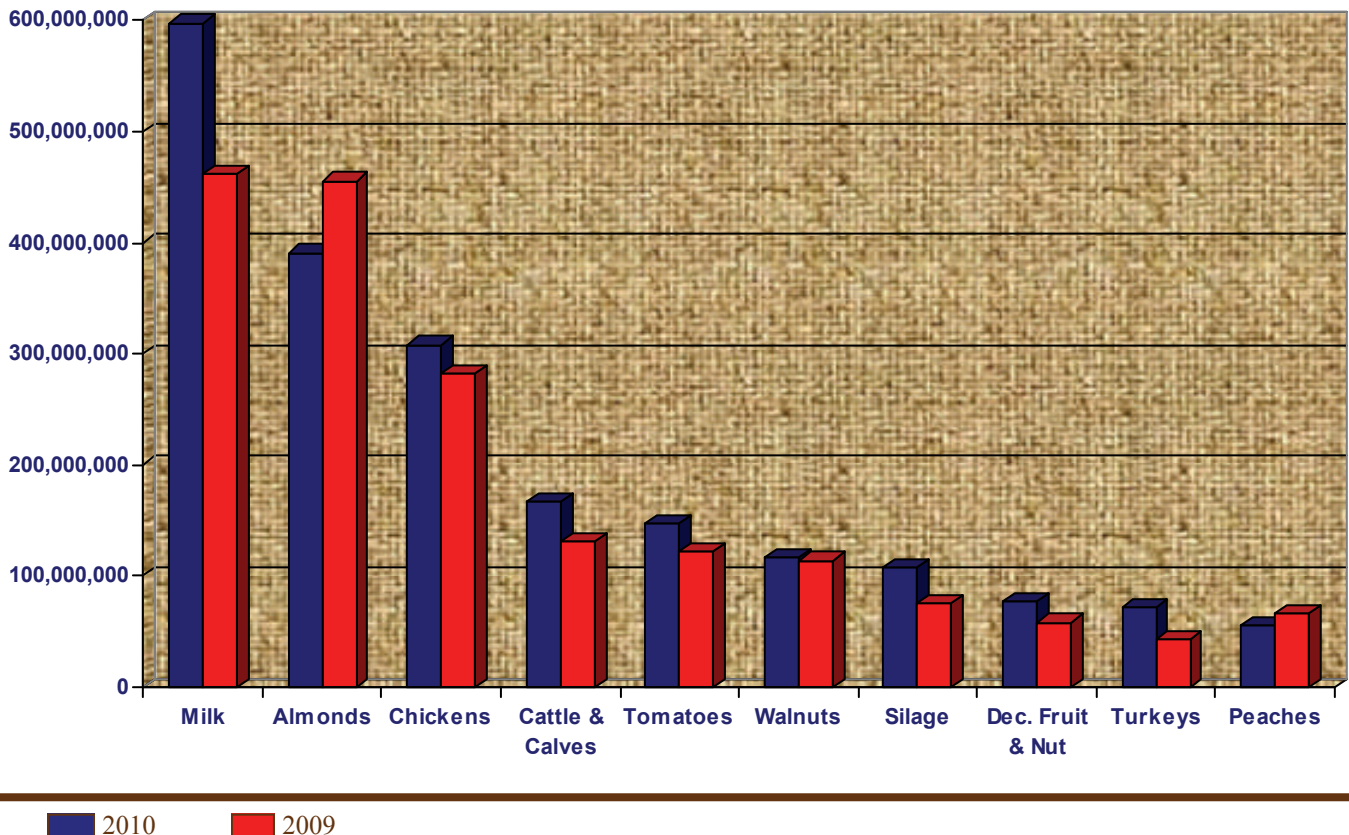
## 50 Years of Production Summary Totals

1961—\$ 142,031,000	1971—\$ 243,287,000	1981—\$ 781,185,000	1991—\$ 1,070,154,000	2001—\$ 1,353,300,000
1962—\$ 146,775,000	1972—\$ 269,541,000	1982—\$ 743,637,000	1992—\$ 1,073,930,000	2002—\$ 1,367,971,000
1963—\$ 158,551,000	1973—\$ 379,530,000	1983—\$ 720,740,000	1993—\$ 1,147,140,000	2003—\$ 1,454,932,000
1964—\$ 167,878,000	1974—\$ 409,538,000	1984—\$ 794,623,000	1994—\$ 1,115,316,000	2004—\$ 1,978,434,000
1965—\$ 165,546,000	1975—\$ 397,311,000	1985—\$ 787,142,000	1995—\$ 1,115,492,000	2005—\$ 1,977,595,000
1966—\$ 192,813,000	1976—\$ 423,761,000	1986—\$ 790,764,000	1996—\$ 1,254,633,000	2006—\$ 2,148,152,000
1967—\$ 193,723,000	1977—\$ 501,367,000	1987—\$ 881,306,000	1997—\$ 1,316,942,000	2007—\$ 2,421,650,000
1968—\$ 199,311,000	1978—\$ 533,376,000	1988—\$ 957,568,000	1998—\$ 1,302,714,000	2008—\$ 2,473,843,000
1969—\$ 220,454,000	1979—\$ 706,595,000	1989—\$ 963,891,000	1999—\$ 1,210,211,000	2009—\$ 2,312,669,000
1970—\$ 237,210,000	1980—\$ 743,584,000	1990—\$ 1,038,356,000	2000—\$ 1,197,302,000	2010—\$ 2,572,434,000



# Top Ten Commodities

Commodity	2010 Rank	2010 Value	2009 Rank	2009 Value
Milk, All	1	\$ 598,840,000	1	\$ 462,251,000
Almonds	2	\$ 390,498,000	2	\$ 455,600,000
Chickens, All	3	\$ 308,041,000	3	\$ 282,424,000
Cattle & Calves, All	4	\$ 167,329,000	4	\$ 131,076,000
Tomatoes, All	5	\$ 147,554,000	5	\$ 121,988,000
Walnuts	6	\$ 116,246,000	6	\$ 114,156,000
Silage, All	7	\$ 107,598,000	7	\$ 75,438,000
Deciduous Fruit & Nut Nursery	8	\$ 77,531,000	9	\$ 58,081,000
Turkeys, All	9	\$ 72,050,000	10	\$ 43,239,000
Peaches, All	10	\$ 54,897,000	8	\$ 66,700,000



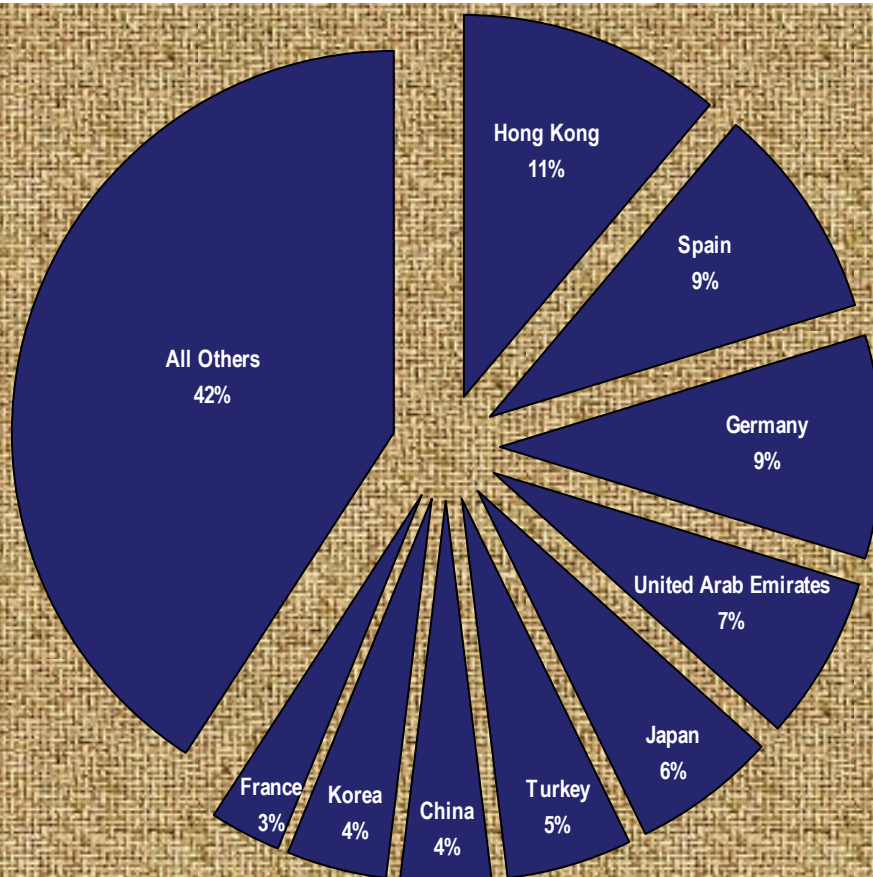




# Exports by Country

Afghanistan	Croatia	India	Netherlands	Sri Lanka
Algeria	Cyprus	Iraq	New Caledonia	Sudan
Argentina	Czech Republic	Ireland	New Zealand	Sweden
Armenia	Denmark	Israel	Nicaragua	Switzerland
Australia	Dominican Republic	Italy	Norway	Syrian Arab Republic
Austria	Ecuador	Jamaica	Oman	Taiwan
Azerbaijan	Egypt	Japan	Pakistan	Thailand
Bahrain	El Salvador	Jordan	Peru	Trinidad & Tobago
Belgium	Estonia	Korea	Philippines	Tunisia
Bosnia	France	Kuwait	Poland	Turkey
Brazil	French Polynesia	Latvia	Portugal	Ukraine
Bulgaria	Germany	Lebanon	Qatar	United Arab Emirates
Canada	Greece	Lithuania	Russian Federation	United Kingdom
Chile	Guatemala	Malaysia	Saudi Arabia	Uruguay
China	Honduras	Mauritius	Singapore	Venezuela
Columbia	Hong Kong	Mexico	South Africa	Viet Nam
Costa Rica	Hungary	Morocco	Spain	Yemen

**In 2010  
Stanislaus  
County  
issued 8,086  
Export  
Certificates  
for over  
100 commodities**





Yellow Panel Trap

# Pest Detection & Emergency Projects 2010

To protect the agricultural and horticultural industries in Stanislaus County, various traps are placed to monitor for specific insects. Trapping allows for the possible early detection of invasive and destructive pests that would be detrimental to our economy, the environment, and our health.



Jackson Trap

Pest	# of Traps	Crops Affected
Mediterranean Fruit Fly	386	Walnut, tomato, apple, almond, plum, peach, nectarine, pear, grape, orange, lemon, grapefruit, fig, pomegranate, kumquat and olive
Mexican Fruit Fly	241	Apple, apricot, citrus, pear, plum, peach, nectarine and pomegranate
General Fruit Fly	85	Citrus, stone fruit and pome fruit
Light Brown Apple Moth	537	Alfalfa, almond, apple, berries, broccoli, citrus, corn, grape, olive, stone fruit and tomatoes
Japanese Beetle	207	Turf and roses
Gypsy Moth	220	Most trees
Oriental Fruit Fly	242	Apple, citrus, cucumber, fig, grape, pear, pomegranate, stone fruit, tomato and walnut
Melon Fly	241	Peaches, oranges, beans, tomato, cucumber, apple, cantaloupe, grape, pear and watermelon
Glassy-winged Sharpshooter	1,766	Grape, almond, peach and citrus / vector for Pierce's Disease
Apple Maggot	53	Stone fruit and pome fruit
Vine Mealy Bug	51	Grapes
Khaphra Beetle	242	Grain and grain products
European Corn Borer	8	Corn, potatoes, oat, green bean, and rhubarb
Asian Citrus Psylid	618	Citrus
European Grapevine Moth	558	Grapes and spurge laurel
Red Imported Fire Ant	Survey & Treat	May infest agricultural and residential settings, as well as natural habitats-dangerous to children, pets, elderly and wildlife

Year	Inspections
2010	1,288
2009	1,398

Our survey includes traps to check for the Glassy-winged Sharpshooter (GWSS). Traps are set out at nurseries and residential sites, and inspections are done of all incoming plant shipments originating from GWSS infested counties.

# of Finds	Pest Found
1	GWSS Adult
1	Red Imported Fire Ant

Oriental Fruit Fly



Khaphra Beetle



Apple Maggot



Red Imported Fire Ant



Light Brown Apple Moth



Mexican Fruit Fly



Asian Citrus Psylid



Vine Mealy Bug



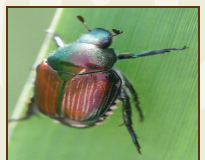
European Grapevine Moth



Med Fruit Fly



Japanese Beetle



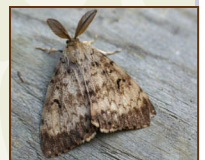
Glassy Winged Sharpshooter



Melon Fly



Gypsy Moth



# **Agricultural Commissioner/Sealer of Weights & Measures**

Gary Caseri

## **Assistant Agricultural Commissioner/Sealer**

Milton O'Haire

## **Deputy Agricultural Commissioner/Sealer**

Kamal Bagri      Dan Bernaciak      Steve Logan      Tim Pelican

## **Agricultural/Weights & Measures Inspectors**

Christopher Bettencourt	Arpinder Brar	Joseph Duchala	Melanie Fisher
Judith Gallardo	Cristina Galvan	Harinder Grewal	Wendy Hahn
Richard T. Homer	Forrest Meares	Chris Michaels	Claudia Parrish
Kim Reed	Hector Rodriguez	Kelle Schroeder	Carolyn Sizemore
Mike Terra	Becky Van Cleave	Courtney Vereker	

## **Confidential Assistant IV**

Susan Azevedo

## **Agricultural Assistant II**

Bertha Castillo      Cassandra Costa      Tina Graver

## **Agricultural Assistant I**

Isaiah Pagani

## **Software Developer/Analyst II**

Nathan Leon

## **Agricultural Facility Coordinator**

Mike Sise

## **Administrative Staff**

Ramona Cunningham      Marietta Thomas      Debbie Wohld

## **Extra-Help Assistants**

Gay Allard-Johnson	Luis Ato	Evelyn Barber	Angela Bates
Sandra Blevins	Stephen Bunce	Leroy Burrows	Kirstyn Cederlind
Jim Friedrich	Scott Gaarde	George Gold	Becky Graham
Teresa Homen	Alexa Ladd	Vickie Meeks	Danielle Mitchell
Ron Varnell	Tom Wendt	Molly Wilkerson	David Wirth