



## Stanislaus County Department of Agriculture

### *2003 Annual Crop Report*

The 2003 Stanislaus County Annual Crop Report salutes the Agriculture Department of Modesto Junior College. Featured above are Jenny Konschak and Jacob Wenger, enthusiastic MJC Ag students with ambitious plans for communicating the importance and benefits of Agriculture in our community.



Jacob Wenger, 20, is a third-year student at Modesto Junior College and is majoring in Ag Business. He plans to transfer to Cal Poly San Luis Obispo next year and will continue in Ag Business with a Minor in Ag Communications. He served as the State President of Future Farmers of America (FFA) in 2001 and as the Chairman of Modesto Junior College FFA Field Day. He is a fourth generation farmer in California and his family produces walnuts and almonds. Jacob's father, Paul Wenger, is the Second Vice-President of the California Farm Bureau Federation.

Jacob cuts metal with a torch in the MJC Ag Mechanics Lab (top left), and ties a walnut tree (above right) at the 60-acre MJC owned property on Beckwith Road.

A seasoned speaker and promoter of Agriculture and the program at MJC, Jacob touts the community involvement of the MJC Ag Department. He emphasizes the great value of the MJC education, the comfortable atmosphere of the department and the close working relationship between students and instructors.

In his spare time, Jacob enjoys the outdoors, particularly hiking, and recently went on a hiking trip in Peru where he enjoyed viewing the local agricultural techniques.

Jenny Konschak, 19, is a first-year Ag student at MJC. Jenny's grandfather, Harold Whaley, was an Ag Instructor at Modesto Junior College. She is majoring in Poultry Production and hopes to eventually transfer to Cal Poly San Luis Obispo or Cal State University at Chico. Jenny plans on obtaining a Bachelors degree in Ag Education and a Masters in Ag Communications. She looks forward to representing an Ag business and traveling, meeting and talking to people about her passion for Agriculture. Jenny currently works at Hilmar Cheese as a tour guide.



Jenny likes to waterski and ride her bike in her spare time, but what she really enjoys is talking about Agriculture.

(Above) Jenny displays fresh produce at the student operated fruit stand located at MJC's Beckwith Road site. (Left) Jenny holds a newborn piglet housed in the Swine Unit farrowing barn at the MJC West Campus facility. (Below) Eggs are harvested and the chicken laying house is maintained by the students (Beckwith Road).



Active in 4-H, Jenny has also served as the FFA Sectional Secretary (Turlock) and is the Young Farmers Treasurer at MJC. She is also an Ag Ambassador and participates in outreach programs promoting the benefits of attending MJC. Jenny believes that young people must be educated to ensure that Ag is here tomorrow. "If we lose knowledge of where our food originates, the safety of our food is lost."



# Stanislaus County Department of Agriculture

## *2003 Annual Crop Report*

The Honorable Board of Supervisors  
County of Stanislaus

Pat Paul	Supervisor District 1
Thomas Mayfield	Supervisor District 2
Jeff Grover	Supervisor District 3
Ray Simon, Chairman	Supervisor District 4
Paul Caruso	Supervisor District 5

Patricia Hill Thomas  
Interim Chief Executive Officer

Dennis Gudgel  
Agricultural Commissioner/Sealer

June 1, 2004

A.G. Kawamura, Secretary  
State of California  
Department of Food and Agriculture  
1220 N Street, Room 409  
Sacramento, California 95814

The Honorable Board of Supervisors  
Stanislaus County  
1010 Tenth Street  
Modesto, California 95354

The Stanislaus County Agricultural Crop Report for 2003 is hereby submitted in compliance with Section 2279 of the California Food and Agricultural Code.

The gross agricultural income for 2003 is \$1,454,932,000. This figure represents an increase of \$86,961,000 (approximately 6%) from the 2002 gross production value of \$1,367,971,000. The Field Crops category decreased approximately 4%. Categories posting significant gains were Fruit & Nut Crops (approximately 9%) and Nursery (approximately 13%) and Livestock & Poultry Products (approximately 10%).

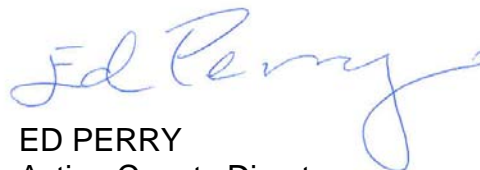
It must be noted that these are gross figures and do not indicate net profit. Also, figures shown do not reflect on any individual operation since the whole county is the smallest unit measured for any particular commodity.

We wish to express our appreciation to the many persons who contributed to the preparation of this document. Special thanks go to the staff of the Department of Agriculture, particularly Sheryl Brennan who compiled this report and Cynthia Darmstandler, who prepared the information for publication.

Respectfully,

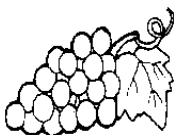


DENNIS GUDGEL  
Agricultural Commissioner/Sealer  
Department of Agriculture  
Stanislaus County



ED PERRY  
Acting County Director  
Cooperative Extension  
Stanislaus County

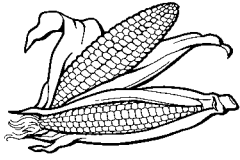
## FRUIT AND NUT CROPS



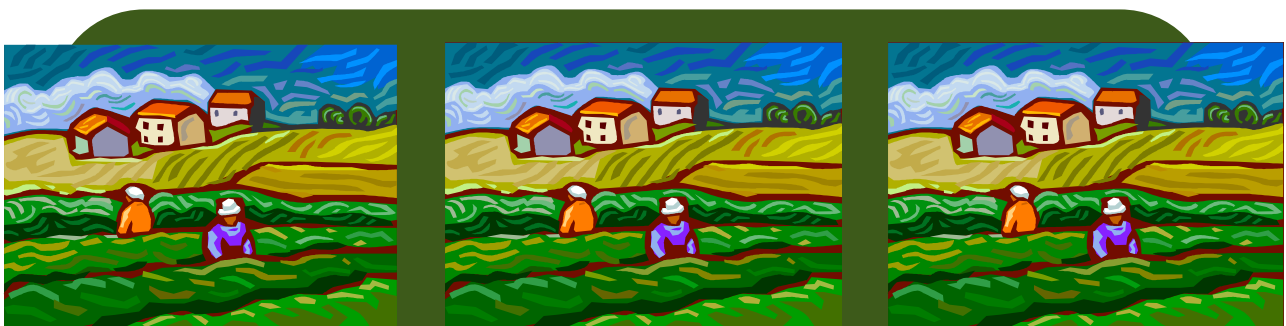
	<i>Production</i>				<i>Value</i>		
	YEAR	HARVESTED ACRES	PER ACRE	TOTAL	UNIT	PER UNIT	TOTAL
Almond Meat	2003	93,800	.94	88,200	Ton	\$ 2,720.00	\$ 239,904,000
	2002	90,100	1.14	102,700	Ton	2,100.00	215,670,000
Almond Hulls	2003			94,100	Ton	75.00	7,058,000
	2002			99,100	Ton	70.00	6,937,000
Apples	2003	1,670	14.80	24,700	Ton	763.00	18,846,000
	2002	1,760	11.80	20,770	Ton	405.00	8,412,000
Apricots	2003	5,800	10.50	60,900	Ton	450.00	27,405,000
	2002	6,400	8.80	56,320	Ton	405.00	22,810,000
Cherries	2003	1,840	2.40	4,420	Ton	2,520.00	11,138,000
	2002	1,630	2.60	4,240	Ton	2,952.00	12,516,000
Grapes, All	2003	11,170					25,135,000
	2002	14,200					28,893,000
<i>Red Varieties</i>	2003	5,750	9.70	55,800	Ton	254.00	14,173,000
	2002	7,400	9.10	67,300	Ton	278.00	18,709,000
<i>White Varieties</i>	2003	5,420	9.63	52,200	Ton	210.00	10,962,000
	2002	6,800	10.40	70,720	Ton	144.00	10,184,000
Nectarines	2003	450	10.80	4,900	Ton	490.00	2,401,000
	2002	500	7.30	3,650	Ton	648.00	2,365,000
Peaches, All	2003	7,920					39,477,000
	2002	7,900					36,052,000
<i>Cling</i>	2003	6,200	19.40	120,300	Ton	240.00	28,872,000
	2002	6,100	19.20	117,100	Ton	240.00	28,104,000
<i>Freestone</i>	2003	1,720	17.60	30,300	Ton	350.00	10,605,000
	2002	1,800	10.40	18,700	Ton	425.00	7,948,000
Walnuts, Inshell	2003	26,350	1.70	44,800	Ton	1,318.00	59,046,000
	2002	25,900	1.50	38,900	Ton	1,305.00	50,765,000
Miscellaneous *	2003	2,000			Acre		1,232,000
	2002	1,900			Acre		9,100,000
Total	2003	147,000					\$ 431,642,000
	2002	150,000					393,520,000

\*Miscellaneous includes Berries, Citrus, Fig, Kiwi, Olive, Pear, Pecan, Persimmon, Pistachio, Plum, and Pluot.

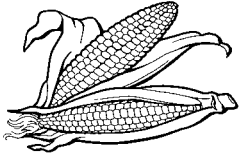
## FIELD CROPS



	<i>Production</i>				<i>Value</i>		
	YEAR	HARVESTED ACRES	PER ACRE	TOTAL	UNIT	PER UNIT	TOTAL
Barley	2003	1,220	1.69	2,060	Ton	\$ 108.00	\$ 222,000
	2002	1,400	2.77	3,880	Ton	108.00	419,000
Beans, All	2003	14,280					13,323,000
	2002	18,450					18,811,000
<i>Blackeyes</i>	2003	3,700	1.49	5,510	Ton	596.00	3,284,000
	2002	4,900	1.40	6,860	Ton	640.00	4,390,000
<i>Baby Limas</i>	2003	3,000	1.27	3,810	Ton	650.00	2,477,000
	2002	4,200	1.35	5,670	Ton	623.00	3,532,000
<i>Large Limas</i>	2003	6,600	1.21	8,000	Ton	842.00	6,736,000
	2002	8,300	1.50	12,500	Ton	813.00	10,163,000
<i>Others</i>	2003	980	1.20	1,180	Ton	700.00	826,000
	2002	1,050	1.10	1,160	Ton	626.00	726,000
Hay, Alfalfa	2003	39,100	8.46	331,000	Ton	110.00	36,410,000
	2002	44,500	8.13	362,000	Ton	106.00	38,372,000
Hay, Grain	2003	24,800	3.62	89,800	Ton	76.00	6,825,000
	2002	21,500	3.38	72,700	Ton	73.00	5,307,000
Pasture, Irrigated	2003	72,000			Acre	135.00	9,720,000
	2002	72,300			Acre	133.00	9,616,000
Rangeland	2003	350,000			Acre	24.00	8,400,000
	2002	350,000			Acre	25.00	8,750,000
Rice	2003	2,240	4.07	9,120	Ton	254.00	2,316,000
	2002	2,210	3.96	8,750	Ton	203.00	1,776,000

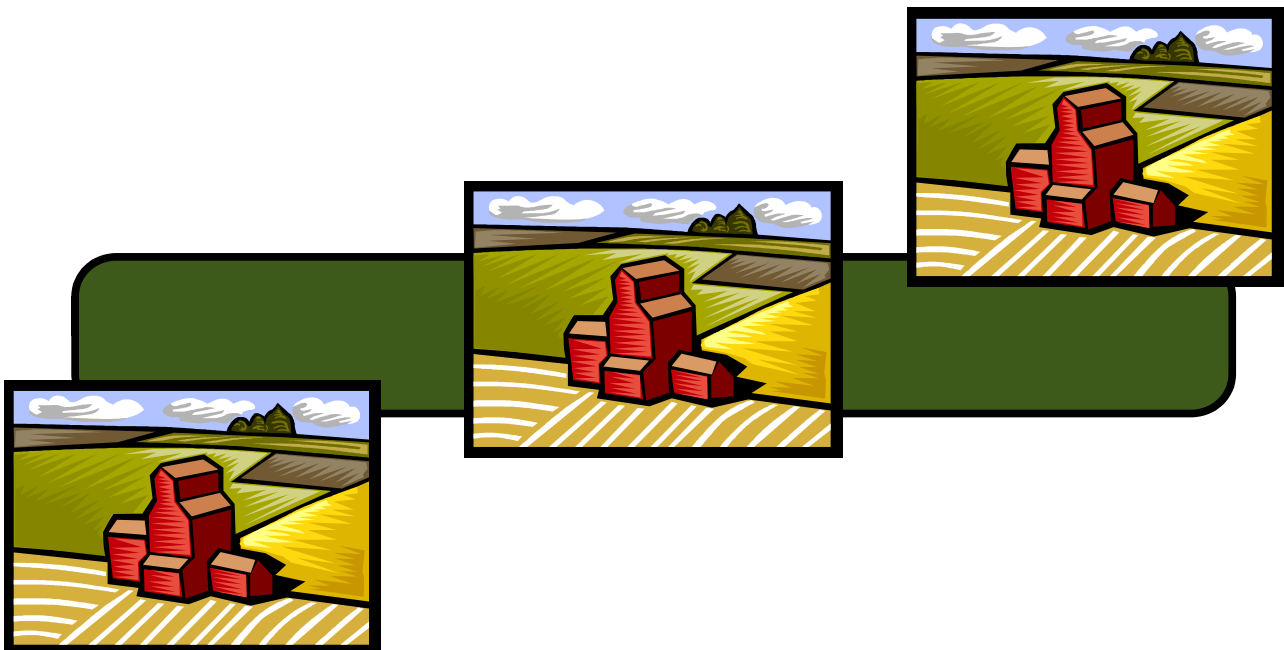


## FIELD CROPS (Cont.)



	YEAR	<i>Production</i>			<i>Value</i>		
		HARVESTED ACRES	PER ACRE	TOTAL	UNIT	PER UNIT	TOTAL
Silage, All	2003	97,100			Ton		\$ 46,585,000
	2002	96,200			Ton		44,767,000
<i>Cereal</i>	2003	39,400	12.20	481,000	Ton	\$ 17.20	8,273,000
	2002	39,500	12.70	502,000	Ton	19.90	9,990,000
<i>Corn</i>	2003	57,700	29.00	1,673,000	Ton	22.90	38,312,000
	2002	56,700	28.00	1,588,000	Ton	21.90	34,777,000
Sudan	2003	2,930	11.20	32,820	Ton	31.60	1,037,000
	2002	3,400	9.30	31,620	Ton	58.00	1,850,000
Wheat	2003	2,920	1.82	5,310	Ton	115.00	611,000
	2002	4,000	2.69	10,760	Ton	113.00	1,216,000
Miscellaneous *	2003	2,350			Acre		1,880,000
	2002	2,130			Acre		1,534,000
Total	2003	609,000					\$ 127,329,000
	2002	616,000					132,418,000

\*Miscellaneous includes Forage Mix, Grass Hay, Vetch, Safflower, Spice and Sugar Beets.





## VEGETABLE CROPS



	<i>Production</i>				<i>Value</i>		
	HARVESTED YEAR	ACRES	PER ACRE	TOTAL	UNIT	PER UNIT	TOTAL
Beans, Succulent	2003	4,400	1.44	6,340	Ton	\$ 474.00	\$ 3,005,000
	2002	6,120	1.74	10,600	Ton	453.00	4,802,000
Broccoli	2003	2,150	3.88	8,340	Ton	373.00	3,111,000
	2002	4,120	3.83	15,800	Ton	448.00	7,078,000
Cauliflower	2003	1,353	4.58	6,200	Ton	469.00	2,908,000
	2002	2,015	5.33	10,700	Ton	395.00	4,227,000
Melons, All	2003	2,859					8,017,000
	2002	3,560					10,963,000
<i>Cantaloupe</i>	2003	1,704	12.29	20,900	Ton	218.00	4,556,000
	2002	1,520	12.00	18,200	Ton	308.00	5,606,000
<i>Honeydew</i>	2003	95	8.40	800	Ton	289.00	231,000
	2002	410	9.60	3,900	Ton	229.00	893,000
<i>Other, Musk</i>	2003	120	5.25	600	Ton	213.00	128,000
	2002	540	6.00	3,200	Ton	240.00	768,000
<i>Watermelon</i>	2003	940	20.00	18,800	Ton	165.00	3,102,000
	2002	1,090	22.00	24,000	Ton	154.00	3,696,000
Peas, Green Processing	2003	88	2.00	200	Ton	100.00	20,000
	2002	645	1.60	1,000	Ton	205.00	205,000
Pumpkins	2003	169	14.20	2,400	Ton	135.00	324,000
	2002	250	12.76	3,200	Ton	114.00	365,000
Spices/Herbs*	2003	7,480	2.50	18,700	Ton	994.00	18,588,000
	2002	4,300	9.50	40,900	Ton	295.00	12,066,000
Spinach	2003	1,890	10.82	20,400	Ton	90.00	1,836,000
	2002	3,430	8.70	29,800	Ton	95.00	2,831,000
Squash	2003	432	19.83	8,600	Ton	216.00	1,858,000
	2002	230	16.30	3,700	Ton	203.00	751,000

\*Spices/Herbs include Basil, Parsley, Cilantro, Dill, Oregano, Rosemary, and Thyme.

## VEGETABLE CROPS (Cont.)



	<i>Production</i>				<i>Value</i>		
	YEAR	HARVESTED ACRES	PER ACRE	TOTAL	UNIT	PER UNIT	TOTAL
Sweet Potatoes	2003	663	14.84	9,800	Ton	\$ 450.00	\$ 4,410,000
	2002	1,000	15.38	15,400	Ton	263.00	4,050,000
Tomatoes, All	2003	16,550					48,619,000
	2002	18,520					49,330,000
<i>Fresh</i>	2003	1,750	23.62	41,300	Ton	527.00	21,765,000
	2002	1,920	22.40	43,000	Ton	453.00	19,479,000
<i>Processing</i>	2003	14,800	34.56	511,500	Ton	52.50	26,854,000
	2002	16,600	36.70	609,200	Ton	49.00	29,851,000
Miscellaneous *	2003	8,500					12,971,000
	2002	5,200					8,840,000
Total	2003	46,500					\$ 105,667,000
	2002	49,400					105,508,000

\*Miscellaneous includes Asparagus, Beet, Cabbage, Cactus Leaf, Carrot, Celery, Cucumber, Sweet Corn, Garlic, Onion, Parsley and Potato.

## SEED CROPS



	YEAR	HARVESTED		UNIT	<i>Value</i>	
		ACRES			PER UNIT	TOTAL
Vegetable	2003	100		Acre	\$ 2,310.00	\$ 231,000
	2002	120		Acre	2,200.00	264,000
Other	2003	500		Acre	603.00	302,000
	2002	560		Acre	530.00	297,000
Total	2003	600				\$ 533,000
	2002	680				561,000

## NURSERY PRODUCTS



	YEAR	<i>Production</i>			<i>Value</i>	
		FIELD ACRES	QUANTITY SOLD	UNIT	PER UNIT	TOTAL
Deciduous Fruit & Nut Trees/Vines	2003	641	15,496,000	Ea.	\$ 4.60	\$ 71,282,000
	2002	625	15,012,000	Ea.	4.01	60,198,000
Ornamental Trees & Shrubs	2003	450	2,995,000	Ea.	6.24	18,689,000
	2002	320	2,825,000	Ea.	5.84	16,498,000
Miscellaneous *	2003	1,207				9,193,000
	2002	1,275				9,193,000
Total	2003	2,298				\$ 99,164,000
	2002	2,220				85,889,000

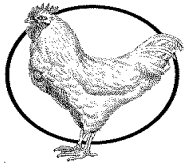
\*Miscellaneous includes Christmas trees, Gypsophilia, Turf and Vegetable transplants.

## APIARY PRODUCTS



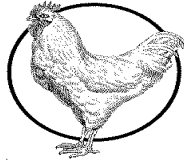
	YEAR	<i>Production</i>		<i>Value</i>		
		TOTAL	UNIT	UNIT	TOTAL	
Beeswax	2003	4,300	Lbs	\$ 1.24	\$ 5,330	
	2002	5,150	Lbs	1.03	5,300	
Bulk Bees	2003	1,200	Lbs	6.65	12,600	
	2002	1,900	Lbs	5.17	9,800	
Honey	2003	259,000	Lbs	1.39	360,000	
	2002	251,000	Lbs	1.30	326,000	
Pollination	2003	144,000	Col	49.78	7,168,000	
	2002	144,000	Col	48.32	6,958,000	
Queen Bees	2003	2,780	Each	7.00	19,500	
	2002	3,850	Each	6.25	24,100	
Total	2003				\$ 7,565,000	
	2002				7,323,000	

## LIVESTOCK AND POULTRY



	YEAR	<i>Production</i>		<i>Value</i>		
		NUMBER OF HEAD	TOTAL LIVEWEIGHT	UNIT	PER UNIT	TOTAL
Cattle & Calves, All	2003	198,000				\$ 68,533,000
	2002	182,000				62,869,000
<i>Beef Feeders</i>	2003	127,000	625,700	Cwt	\$ 67.50	42,235,000
	2002	113,300	561,000	Cwt	67.20	37,699,000
<i>Beef Slaughter</i>	2003	28,300	157,100	Cwt	48.49	7,618,000
	2002	26,000	134,000	Cwt	49.40	6,620,000
<i>Dairy Slaughter</i>	2003	42,600	533,100	Cwt	35.04	18,680,000
	2002	42,400	530,000	Cwt	35.00	18,550,000
Sheep & Lambs	2003	2,850	4,260	Cwt	73.30	312,000
	2002	2,640	4,008	Cwt	48.90	196,000
Hogs & Pigs	2003	21,000	33,300	Cwt	55.01	1,832,000
	2002	20,200	32,000	Cwt	53.75	1,720,000
Chickens, All	2003	206,671,000				136,223,000
	2002	238,500,000				139,230,000
<i>Chickens</i>	2003	55,850,000	290,420,000	Lbs	0.36	104,551,000
	2002	56,500,000	293,800,000	Lbs	0.35	102,830,000
<i>Chicks</i>	2003	150,821,000		Each	0.21	31,672,000
	2002	182,000,000		Each	0.22	36,400,000
Turkeys, All	2003	9,281,000				31,351,000
	2002	9,718,000				37,129,000
<i>Turkeys</i>	2003	2,381,000	47,620,000	Lbs	0.47	22,381,000
	2002	2,823,000	56,460,000	Lbs	0.45	25,407,000
<i>Poults</i>	2003	6,900,000		Each	1.30	8,970,000
	2002	6,895,000		Each	1.66	11,722,000
Squab	2003	501,000		Each	3.47	1,739,000
	2002	451,000		Each	3.42	1,533,000
Total	2003					\$ 239,990,000
	2002					242,677,000

# LIVESTOCK AND POULTRY PRODUCTS



	YEAR	<i>Production</i>		<i>Value</i>	
		TOTAL	UNIT	PER UNIT	TOTAL
Milk	2003	36,152,000			\$ 428,392,000
	2002	35,245,000			390,071,000
<i>Market</i>	2003	35,864,000	Cwt	\$ 11.85	424,988,000
	2002	34,969,000	Cwt	11.07	387,107,000
<i>Manufacturing</i>	2003	288,000	Cwt	11.82	3,404,000
	2002	276,000	Cwt	10.74	2,964,000
Eggs, Chicken	2003	20,501,000	Doz	0.60	12,301,000
Market	2002	20,535,000	Doz	0.42	8,625,000
Eggs, Turkey	2003	3,116,000	Each	0.75	2,337,000
Hatching	2002	2,113,000	Each	0.65	1,373,000
Wool	2003	18,720	Lbs	0.65	12,200
	2002	16,800	Lbs	0.37	6,200
<b>Total</b>	2003				<b>\$ 443,042,000</b>
	2002				<b>400,075,000</b>



## STANISLAUS COUNTY LEADING COMMODITIES

2003 RANK	COMMODITY	VALUE	2002 RANK
1	Milk, All	\$ 428,392,000	1
2	Almonds	239,904,000	2
3	Chickens, All	136,223,000	3
4	Deciduous Nursery	71,282,000	5
5	Cattle & Calves, All	68,533,000	4
6	Walnuts	59,046,000	6
7	Tomatoes, All	48,619,000	7
8	Silage, All	46,585,000	8
9	Peaches, All	39,477,000	10
10	Alfalfa	36,410,000	9



## SUMMARY

	YEAR	HARVESTED ACREAGE	ESTIMATED VALUE
Fruit & Nut Crops	2003	147,000	\$ 431,642,000
	2002	150,000	393,520,000
Field Crops	2003	609,000	127,329,000
	2002	616,000	132,418,000
Vegetable Crops	2003	46,500	105,667,000
	2002	49,400	105,508,000
Seed Crops	2003	712	533,000
	2002	680	561,000
Nursery Products	2003	2,298	99,164,000
	2002	2,220	85,889,000
Apiary Products	2003		7,565,000
	2002		7,323,000
Livestock & Poultry	2003		239,990,000
	2002		242,677,000
Livestock & Poultry Products	2003		443,042,000
	2002		400,075,000
Total	2003	805,510	\$ 1,454,932,000
	2002	818,300	1,367,971,000



# 2003 CROP CATEGORY SUMMARY

