

Shasta County



2002

Crop and Livestock Report



Dedicated to
HOMER E. PARK
1915-2003

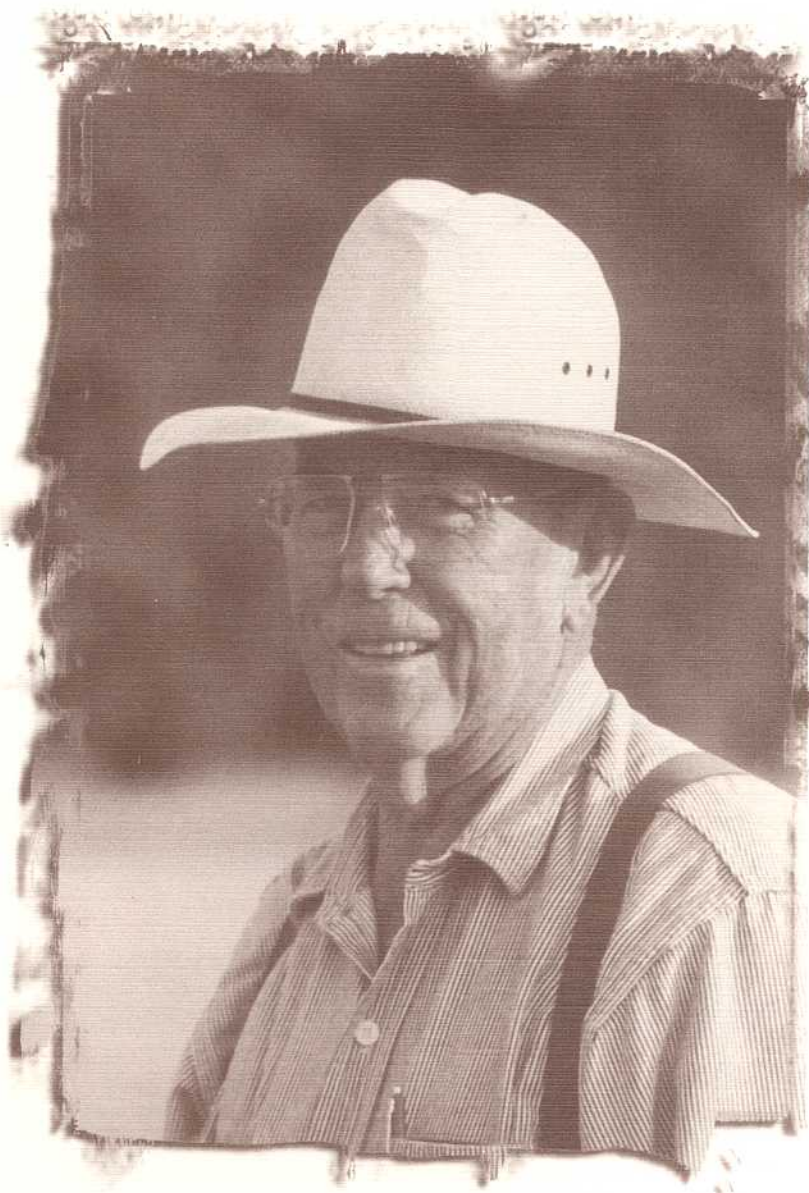
This year's Crop and Livestock Report is dedicated to the memory of Homer Park who established the County's apiary industry which was valued at over \$3 million in 2002.

Known as the father of Shasta County's bee industry, Homer started raising bees when he was eight years old. His early interest developed into a lifelong passion, making him a pioneer of today's apiary industry. His dedication drove him to be involved in every facet of the industry from pollination to honey production and especially the breeding and rearing of queen and package bees.

He is credited with several queen and package bee industry innovations including the development of a variety of prolific and gentle golden yellow bees, today regarded as the standard by contemporary bee breeders. He was the first to use honey comb uncapping and wax/honey separator machines and boom loaders on trucks for moving hives. He also developed specialized feeders and hives that improved the productivity of queen bees. These innovations helped to establish Palo Cedro as the "Queen Bee Capital of the World."

Homer, the undisputed patriarch of the Palo Cedro beekeeping community, was a past President of the California Beekeepers Association, a long-time member of the American Beekeeping Federation, and was involved in many community groups.

With his passing in the spring, all who knew him will miss him, but his legacy and love for his industry will live on.





SHASTA COUNTY

DEPARTMENT OF AGRICULTURE/WEIGHTS & MEASURES

3179 Bechelli Lane, Suite 210
Redding, CA 96002
Phone: (530) 224-4949
Fax: (530) 224-4951

MARY PFEIFFER
Agricultural Commissioner
Sealer of Weights & Measures

TO: William J. Lyons, Jr., Secretary
California Department of Food and Agriculture

The Honorable Board of Supervisors, County of Shasta

Patricia "Trish" Clarke, Chairman, District 5
David Kehoe, District 1
Irwin Fust, District 2
Glenn Hawes, District 3
Molly Wilson, District 4

H. Douglas Latimer, County Administrative Officer

I am pleased to submit, in accordance with Section 2279 of the California Food and Agricultural Code, Shasta County's Annual Crop and Livestock Report for 2002. This report summarizes the acreage, production, and gross value of agricultural commodities and livestock produced in Shasta County.

The gross value of agricultural products produced in Shasta County during 2002 increased by almost one percent to \$52,197,800. The increase in the value of orchard crops, especially walnuts, can be attributed to the mild spring weather and beekeepers benefitted from record high honey prices. While there was an increase in the number of acres of mint harvested, growers experienced a significant decline in the price they received for their mint oil. The value of other field crops remained stable.

Severe rangeland drought conditions reduced the amount of feed typically available to livestock producers in some areas of the County, requiring many ranchers to provide supplemental feed and haul water to their stock. While Shasta County's inclusion in the federal Livestock Compensation Program provided some financial relief to ranchers, production costs increased. Although the gross value of all Shasta County agricultural products increased in 2002, it must be emphasized that this value represents gross receipts, not actual returns to producers. The gross value does not take into account increased production costs incurred by many livestock producers and others as well.

I wish to express my sincere appreciation to the many producers, agricultural business representatives, and public agencies who have cooperated in supplying the data necessary to produce this report. Development of this report was completed under the leadership of Agricultural Investigator Carl Yingst.

Sincerely,

MARY PFEIFFER
Agricultural Commissioner

Mission Statement

The Shasta County Department of Agriculture and Weights and Measures is entrusted with the mission of promoting and protecting the agricultural industry of the County and its environment, ensuring the health and safety of the County's citizens, and fostering confidence and equity in the marketplace through education and the fair and uniform enforcement of laws, regulations, and ordinances enacted by the people of the State of California and the County of Shasta.

Staff

Agricultural Commissioner/ Sealer of Weights and Measures

Mary Pfeiffer

Deputy Agricultural Commissioner/Deputy Sealer

Paul Kjos

Agricultural and Standards Investigators

Paulette Cobb
Mark Conover
Kevin Martyn
Caryn Moen
John Westphal
Carl Yingst

Agricultural and Standards Program Assistants

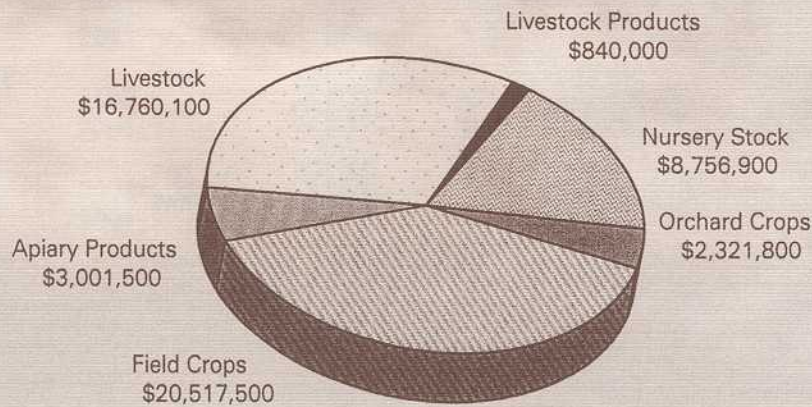
Ray Abernathy
Cheri Johnson

Administrative Staff

Bonnie Sanderson, Agency Staff Services Analyst
Barbara Miceli, Typist Clerk III
Sherry Quaife, Typist Clerk II

Shasta County Livestock & Crop Summary

2002 TOTAL PRODUCTION VALUE: \$52,197,800



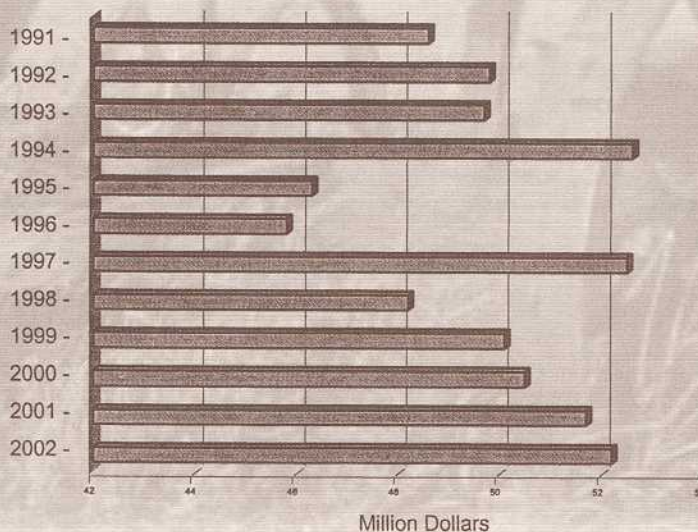
COMPARISON SUMMARY

	2002	2001	2000	1999
LIVESTOCK	\$16,760,100	\$17,412,300	\$18,438,300	\$16,831,200
LIVESTOCK PRODUCTS	840,000	934,000	862,500	832,000
APIARY PRODUCTS	3,001,500	2,591,500	2,377,900	2,318,500
FIELD CROPS	20,517,500	20,490,800	18,762,200	18,726,400
NURSERY STOCK	8,756,900	8,830,300	8,212,400	9,534,000
ORCHARD CROPS	<u>2,321,800</u>	<u>1,432,100</u>	<u>1,883,600</u>	<u>1,812,000</u>
TOTALS	\$52,197,800	\$51,691,000	\$50,536,900	\$50,054,100
TIMBER	0*	\$39,261,247	\$40,399,186	\$49,412,637
OTHER FOREST PRODUCTS	\$15,263,000	\$14,638,200	\$13,265,000	\$ 8,261,900

*Not Available

Totals may not add due to rounding.

TOTAL VALUE OF AGRICULTURAL PRODUCTS 1991-2002



Livestock Production

<u>ITEM</u>	<u>YEAR</u>	<u>NO. HEAD</u>	<u>TOTAL LIVEWEIGHT</u>	<u>UNIT</u>	<u>AVG/UNIT</u>	<u>TOTAL</u>
CATTLE & CALVES						
Feeders	2002	16,850	112,053	cwt	\$77.64	\$8,699,800
	2001	17,000	111,180	cwt	84.00	9,339,200
Slaughter Cattle	2002	2,650	37,100	cwt	41.23	1,529,600
	2001	2,500	33,925	cwt	37.00	1,255,300
Breeding Stock	2002	2,900		head	821.00	2,380,900
	2001	2,950		head	853.25	2,517,100
Pasture Cattle	2002	8,600	20,898	cwt	72.50	1,515,100
	2001	8,750	19,125	cwt	84.00	1,606,500
TOTAL CATTLE	2002					\$14,125,400
	2001					\$14,718,100
SHEEP & LAMBS	2002	2,500	2,375	cwt	69.40	164,800
	2001	2,500	2,375	cwt	67.30	159,900
SWINE All Classes	2002	1,000	1,100	cwt	34.20	37,600
	2001	1,000	1,100	cwt	44.90	49,400
OTHER LIVESTOCK (Fish, Poultry, Goats, etc.)	2002					2,432,300
	2001					2,484,900
TOTAL LIVESTOCK	2002					\$16,760,100
	2001					\$17,412,300

Livestock Products

<u>ITEM</u>	<u>YEAR</u>	<u>TOTAL</u>
LIVESTOCK PRODUCTS	2002	\$840,000
	2001	\$934,000

Forest Products

<u>ITEM</u>	<u>YEAR</u>	<u>PRODUCTION</u>	<u>UNIT</u>	<u>TOTAL</u>
TIMBER	2001	152,104,000	bd. ft.	\$39,261,247
	2000	144,513,000	bd. ft.	40,399,186
MISC. FOREST PRODUCTS	2002			\$15,263,000
	2001			14,638,200

Field Crops

<u>CROP</u>	<u>YEAR</u>	<u>HARVESTED ACRES</u>	<u>PER ACRE</u>	<u>TOTAL</u>	<u>UNIT</u>	<u>AVG/ UNIT</u>	<u>TOTAL</u>
WHEAT	2002	635	1.0	635	ton	\$70.00	\$44,500
	2001	650	1.0	650	ton	100.00	65,000
WILD RICE	2002	4,100	1,564	6,412,400	lb	.41	2,629,100
	2001	4,000	1,367	5,468,000	lb	.38	2,077,900
MINT	2002	1,900	78	148,200	lb	11.00	1,630,200
	2001	1,575	83	130,725	lb	14.00	1,830,200
MISC CROPS (Grain, Seed & Truck Crops, etc.)	2002						628,100
	2001						609,400
HAY							
Alfalfa	2002	6,300	5.1	32,130	ton	120.00	3,855,600
	2001	6,300	5.1	32,130	ton	125.00	4,016,300
Other Hay	2002	14,200	2.5	35,500	ton	110.00	3,905,000
	2001	15,100	3.0	45,300	ton	120.00	5,436,000
Timothy Hay	2002	1,400	5.0	7,000	ton	150.00	1,050,000
	2001	*					
PASTURE							
Irrigated	2002	33,000			acre	100.00	3,300,000
	2001	33,000			acre	100.00	3,300,000
Improved	2002	100,000			acre	12.00	1,200,000
	2001	100,000			acre	12.00	1,200,000
Rangeland	2002	325,000			acre	7.00	2,275,000
	2001	326,000			acre	6.00	1,956,000
TOTAL FIELD CROPS	2002						\$20,517,500
	2001						\$20,490,800

*Included in Other Hay

Orchard Crops

<u>CROP</u>	<u>YEAR</u>	<u>HARVESTED ACRES</u>	<u>PER ACRE</u>	<u>TOTAL</u>	<u>UNIT</u>	<u>AVG/ UNIT</u>	<u>TOTAL</u>
WALNUTS	2002	675	1.60	1,080	ton	\$1,000.00	\$1,080,000
	2001	600	.92	552	ton	1,040.00	574,100
FRUIT & NUT CROPS (Apples, Olives, Stone Fruit, Grapes, Kiwis, Pistachios, etc.)	2002						1,241,800
	2001						858,000
TOTAL ORCHARD CROPS	2002						\$2,321,800
	2001						\$1,432,100

Nursery Stock

<u>CROP</u>	<u>YEAR</u>	<u>HARVESTED ACRES</u>	<u>PLANTS /ACRE</u>	<u>TOTAL</u>	<u>UNIT</u>	<u>AVG/ UNIT</u>	<u>TOTAL</u>
STRAWBERRY							
Low Elevation	2002	27	428	11,560	1,000s	\$52.12	\$602,500
	2001	38	377	14,330	1,000s	53.92	772,700
High Elevation	2002	310	365	113,150	1,000s	49.41	5,590,700
	2001	312	358	111,700	1000s	53.10	5,931,300
CHRISTMAS TREES	2002			12,200	ea	14.85	181,200
	2001			14,400	ea	14.10	203,000
OTHER NURSERY STOCK (Turf, Ornamentals, etc.)	2002						2,382,500
	2001						1,923,300
TOTAL NURSERY STOCK	2002						\$8,756,900
	2001						\$8,830,300

Apiary Products

<u>ITEM</u>	<u>YEAR</u>	<u>PRODUCTION</u>	<u>UNIT</u>	<u>AVG/UNIT</u>	<u>TOTAL</u>
HONEY	2002	406,500	lb	\$1.29	\$524,400
	2001	343,400	lb	.58	199,200
BEESWAX	2002	11,200	lb	1.58	17,700
	2001	9,500	lb	1.51	14,400
PACKAGE BEES	2002	19,500	lb	6.64	129,500
	2001	23,825	lb	6.69	159,400
QUEENS	2002	124,400	ea	7.85	976,600
	2001	119,250	ea	8.09	964,800
NUCLEI	2002	7,275	ea	33.00	240,100
	2001	5,950	ea	33.43	198,900
POLLINATION	2002	24,600	col	45.25	1,113,200
	2001	23,000	col	45.86	1,054,800
TOTAL APIARY PRODUCTS	2002				\$3,001,500
	2001				\$2,591,500

Shasta County's 2002 Agricultural Export Trade Partners

International trade is a vital component of Shasta County's agricultural economy. Commodities produced here are shipped worldwide each year. Shasta County agricultural products were exported to the following forty-two countries in 2002.



2002 Sustainable Agriculture Report

Pest Exclusion

<u>Inspection Type</u>	<u>Premises Visited</u>	<u>Shipments Inspected</u>	<u>Rejections</u>	<u>Pest Interceptions</u>
Post Office	553	16,315	159	24
United Parcel Service	230	3,631	17	3
Federal Express	221	5,150	33	49
Air Freight	10	14	1	1
Gypsy Moth	8	8	0	1
Truck	240	258	0	1
Specialty Markets	13	13	0	0
Other	43	37	3	16

Significant pest interceptions included Red Imported Fire Ant, Mediterranean Fruit Fly Larvae, Water Hyssop, and Apple Snail.

Pest Detection

<u>Trap Name</u>	<u>Number of Traps Deployed</u>
Jackson Trap	
Mediterranean Fruit Fly	218
Melon Fruit Fly	80
Oriental Fruit Fly	80
McPhail Trap	
Mediterranean Fruit Fly	80
Delta Trap	
Gypsy Moth	355
Japanese Beetle Trap	
Japanese Beetle	81
Exotic Longhorned Beetle	3
Glassy-winged Sharpshooter	286

Direct Marketing and Organic Farming

Direct Marketing Program

Direct marketing is a system that allows Certified Producers to market their agricultural products directly to consumers via Certified Farmers Markets. The Agricultural Commissioner's Office regulates this program to insure that only certified agricultural products are sold at Certified Farmers Markets.

Certified Farmers Markets	6
Certified Producers	35

Registered Organic Grower Program

<u>Crops</u>	<u>Number of Farms</u>	<u>Estimated Acres</u>
Fruits, Vegetables, Grains, Forage	22	5,550

2002 Sustainable Agriculture Report

Pest Management - Biological Control

<u>Pest</u>	<u>Agent/Mechanism</u>	<u>Scope of Program</u>
Yellow Starthistle <i>Centaurea solstitialis</i>	Flower Weevil - <i>Larinus curtus</i> Seed Weevil - <i>Bangasternus orientalis</i> Hairy Weevil - <i>Eustenopus villosus</i> Gall Fly - <i>Urophora sirunaseva</i> Peacock Fly - <i>Chaetorellia australis</i>	4 Experimental Sites Generally distributed 14 New Release Sites/ Generally distributed 2 New Nursery Sites Generally distributed Generally distributed
Bull Thistle <i>Cirsium vulgare</i>	Gall Fly - <i>Urophora stylata</i>	1 New Release Site
Spotted Knapweed <i>Centaurea maculosa</i>	Gall Fly - <i>Urophora quadrifasciata</i> Gall Fly - <i>Urophora affinis</i> Lesser Knapweed Weevil - <i>Larinus minutus</i> Root Moth - <i>Agapeta zoegana</i> Root Boring Weevil - <i>Cyphocleonus achates</i> Seedhead Weevil - <i>Bangasternus fausti</i> Seedhead Fly - <i>Terellia virens</i>	Established Established Established Established Established Established Established
Squarrose Knapweed <i>Centaurea squarrosa</i>	Lesser Knapweed Weevil - <i>Larinus minutus</i> Bronze Rootborer - <i>Sphenoptera jugoslavica</i>	1 Experimental Site 1 Experimental Site
Purple Loosestrife <i>Lythrum salicaria</i>	Leaf Beetles - <i>Galerucella californiensis</i> - <i>Galerucella pusilla</i> Seed Weevil - <i>Nanophyes marmoratus</i> Root Weevil - <i>Hylobius transversovittatus</i>	5 Experimental Sites 3 Experimental Sites 4 Experimental Sites 3 Experimental Sites
Puncture Vine <i>Tribulus terrestris</i>	Seed Weevil - <i>Micolarinus lareynii</i> Stem Weevil - <i>Micolarinus lypriformis</i>	Generally distributed low elevation Generally distributed low elevation
St. Johnswort (Klamath Weed) <i>Hypericum perforatum</i>	Klamath Weed Beetle - <i>Chrysolina sp.</i>	Generally distributed
Red Gum Lerp Psyllid <i>Glycaspis brimblecombei</i>	Psyllid Parasitoid Wasp - <i>Psyllaephagus bliteous</i>	2 Experimental Sites

Pest Eradication

<u>Pest</u>	<u>Agent/Mechanism</u>	<u>Scope of Program</u>
Dalmatian Toadflax, Spotted Knapweed, Diffuse Knapweed, Squarrose Knapweed, Scotch Thistle, Musk Thistle, Scotch Broom, Ailanthus, Chinese Wisteria, Oblong Spurge, Perennial Pepperweed	Integrated Vegetation Management	108 sites spread over 5,500 acres throughout the County