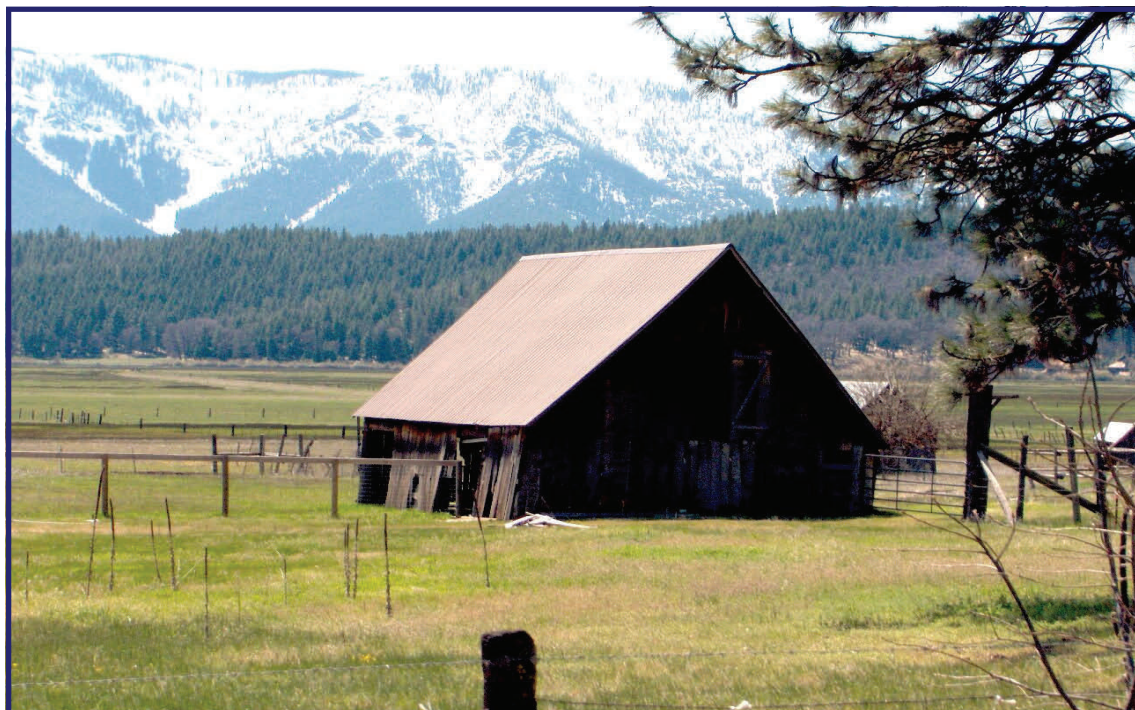


PLUMAS AND SIERRA COUNTIES



2004 Annual Crop Report And Livestock Report

To: A.G. Kawamura, Secretary
California Department of Food and Agriculture

The Honorable Board of Supervisors,

County of Plumas

Bill Powers, District 1
Robert A. Meacher, District 2
William N. Dennison, District 3
Rose Comstock, District 4
Ole Olson, District 5

County of Sierra

Arnold Gutman, District 1
Peter Huebner, District 2
Bill Nunes, District 3
Brooks Mitchell, District 4
Patricia Whitley, District 5

I am pleased to submit, in accordance with Section 2279 of the California Food and Agriculture Code, Plumas and Sierra Counties' Annual Crop Report for 2004. This report summarizes the acreage, production, and gross values of agricultural commodities produced in Plumas and Sierra Counties. It does not attempt to show county inventory, cost of production, or net income of agricultural producers.

Overall production was up in 2004 due to the easing of the drought. Prices for field crops and livestock were up resulting in more value for Plumas/Sierra growers production.

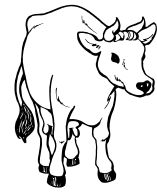
This report includes a summary of sustainable agriculture activities, which have been completed by the department in 2004. The purpose of these activities is to prevent and control the spread of exotic plant and insect pests throughout our two counties using integrated pest management techniques.

I wish to express my sincere appreciation to the many producers, agricultural business representatives, and public agencies that have cooperated in supplying the data necessary to produce this report. I would also like to express my appreciation for the help that my administrative assistant, Margo Stratton, has given me in the publication of this report.

Respectfully yours,

KARL BISHOP
Agricultural Commissioner
Sealer of Weights of Measures

**PLUMAS COUNTY
AGRICULTURAL PRODUCTION REPORT - 2004**

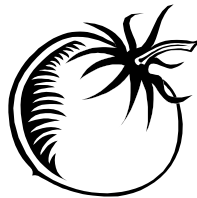


LIVESTOCK	Production Value					
	Commodity	Year	# Head	Total Liveweight	Unit	Per Unit
Steers	2004	8,150	65,200	CWT	\$110.00	\$7,172,000
	2003	8,100	62,775	CWT	\$91.00	\$5,712,525
Heifers	2004	6,750	47,250	CWT	\$102.00	\$4,819,500
	2003	6,700	46,900	CWT	\$88.00	\$4,127,200
Slaughter	2004	700	8,400	CWT	\$49.00	\$411,600
	2003	700	8,050	CWT	\$45.00	\$362,250
Other Livestock	2004					\$135,000
	2003					\$137,600
TOTAL LIVESTOCK	2004					\$12,538,100
	2003					\$10,339,575

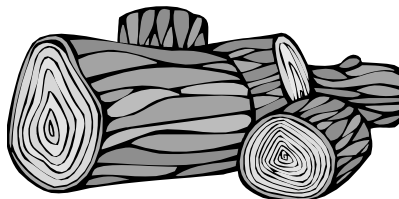


FIELD CROPS	Harvested Production Value						
	Commodity	Year	Acreage	Per Acre	Total	Unit	Per Unit
Alfalfa Hay	2004	6,000	4	24,000	Tons	\$130.00	\$3,120,000
	2003	6,000	3.90	23,400	Tons	\$100.00	\$2,340,000
Meadow Hay	2004	3,000	3.5	10,500	Tons	\$100.00	\$1,050,000
	2003	3,000	3.10	9,300	Tons	\$110.00	\$1,023,000
Grain Hay	2004	1,000	2.1	2,100	Tons	\$75.00	\$157,500
	2003	1,000	2.50	2,500	Tons	\$100.00	\$250,000
Irrigated Pasture	2004	35,000			Acre	\$70.00	\$2,450,000
	2003	35,000			Acre	\$70.00	\$2,450,000
Non-Irrigated Pasture	2004	52,000			Acre	\$20.00	\$1,040,000
	2003	52,000			Acre	\$20.00	\$1,040,000
Range Pasture	2004	65,000			Acre	\$3.00	\$195,000
	2003	65,000			Acre	\$3.00	\$195,000
TOTAL FIELD CROPS	2004	162,000					\$8,012,500
	2003	162,000					\$7,298,000

Miscellaneous Crops	2004					\$200,000
	2003					\$110,000
<i>(Nursery, Apiary, Seed, Fruit, Potatoes, Grain, Etc.)</i>						
TOTAL CROPS	2004					\$8,012,500
	2003					\$7,408,000
GRAND TOTAL	2004					\$20,750,600
	2003					\$17,747,575
<i>(Livestock, field crops, and miscellaneous crops)</i>						



TIMBER	Production Value			
Commodity	Year	Production	Unit	Total
Gross Timber Harvest	2004	97,866	MBF	\$31,273,174
	2003	97,866	MBF	\$22,799,710
Miscellaneous Timber Products	2004			\$900,000
	2003			\$700,000
<i>(Christmas trees, cull logs, fuel logs, pulp chips, hardwood logs, fuel chips, and etc.)</i>				
TOTAL Timber Products	2004			\$32,173,174
	2003			\$23,499,710



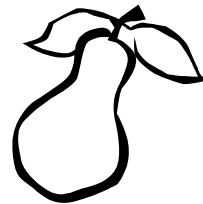
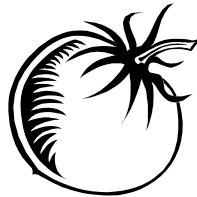
**SIERRA COUNTY
AGRICULTURAL PRODUCTION REPORT - 2004**

LIVESTOCK	Production Value					
Commodity	Year	# Head	Total Liveweight	Unit	Per Unit	Total
Steers	2004	2619	20,297	CWT	\$112.00	\$2,273,292
	2003	2,700	20,925	CWT	\$91.00	\$1,904,175
Heifers	2004	2,100	14,700	CWT	\$105.00	\$1,543,500
	2003	2,000	14,000	CWT	\$91.00	\$1,274,000
Slaughter	2004	200	2,400	CWT	\$51.00	\$122,400
	2003	200	2,300	CWT	\$45.00	\$103,500
Other Livestock	2004					\$20,000
	2003					\$20,000
TOTAL LIVESTOCK	2004					\$3,959,192
	2003					\$3,301,675

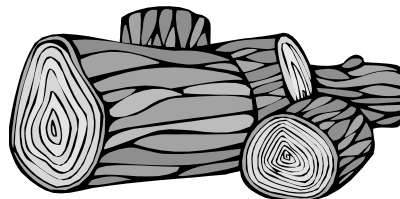


FIELD CROPS	Harvested Production Value						
Commodity	Year	Acreage	Per Acre	Total	Unit	Per Unit	Total
Alfalfa Hay	2004	1,200	4.00	4,800	Tons	\$120.00	\$576,000
	2003	1,200	3.90	4,680	Tons	\$100.00	\$468,000
Meadow Hay	2004	1,600	2.00	3,200	Tons	\$100.00	\$320,000
	2003	1,600	2.40	3,840	Tons	\$110.00	\$422,400
Grain Hay	2004	700	2.00	1,400	Tons	\$75.00	\$105,000
	2003	750	2.50	1,875	Tons	\$95.00	\$178,125
Irrigated Pasture	2004	11,445			Acre	\$70.00	\$801,150
	2003	11,445			Acre	\$70.00	\$801,150
Non-Irrigated Pasture	2004	20,000			Acre	\$20.00	\$400,000
	2003	20,000			Acre	\$20.00	\$400,000
Range Pasture	2004	24,000			Acre	\$3.00	\$72,000
	2003	24,000			Acre	\$3.00	\$72,000
TOTAL FIELD CROPS	2004	58,945					\$2,274,150
	2003	58,995					\$2,341,675

Miscellaneous Crops	2004					\$335,000
	2003					\$35,000
<i>(Nursery, Apiary, Seed, Fruit, Potatoes, Grain, Etc.)</i>						
TOTAL CROPS	2004					\$2,274,150
	2003					\$2,376,675
GRAND TOTAL	2004					\$6,268,342
	2003					\$5,678,350
<i>(Livestock, field crops, and miscellaneous crops)</i>						



Timber	Production Value			
Commodity	Year	Production	Unit	Total
Gross Timber Harvest	2004	35,193	MBF	\$5,308,752
	2003	35,193	MBF	\$5,265,290
Miscellaneous Timber Products	2004			\$75,000
	2003			\$53,000
<i>(Christmas trees, cull logs, fuel logs, pulp chips, hardwood logs, fuel chips, and etc.)</i>				
TOTAL Timber Products	2004			\$5,383,752
	2003			\$5,318,290



PLUMAS COUNTY and SIERRA COUNTY SUSTAINABLE AGRICULTURE REPORT - 2004

Pest Agent / Mechanism Scope of Program

PEST EXCLUSION

Exotic pests	Shipments into Counties via U.S. Postal Service, United Parcel Service, Federal Express, common carriers, etc.	412 inspections
--------------	--	-----------------



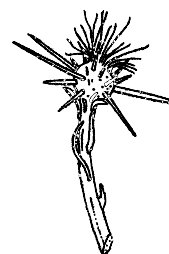
PEST DETECTION

Gypsy Moth Japanese Beetle	151 traps placed throughout Plumas and Sierra Counties to detect the presence of these pests.	None Detected
-------------------------------	---	---------------

The Pest Eradication and Pest Mangement programs incorporate integrated pest management (IPM) practices including biological control agents, mechanical removal, and chemical (herbicide) applications.

PEST ERADICATION

Dalmatian Toadflax	mechanical, chemical
Diffuse Knapweed	biological (<i>Larinus minutus</i> , <i>Bangasternus fausti</i>), mechanical, chemical
Mediterranean Sage	chemical
Musk Thistle	biological (<i>Rhinocyllus conicus</i>), mechanical, chemical
Rush Skeletonweed	biological (<i>Puccinia chondrillina</i>), mechanical, chemical
Scotch Thistle	mechanical, chemical
Spotted Knapweed	mechanical, chemical
Wavyleaf Thistle	mechanical, chemical
Yellowspine Thistle	mechanical, chemical



PEST MANAGEMENT

Bull Thistle	biological (<i>Urophora sirunaseva</i>)
Dyer's Woad	mechanical
Klamath Weed	biological (<i>Chrysolina quadrigemina</i>)
Russian Knapweed	chemical
Scotch Broom	chemical, mechanical
Tall Whitetop	chemical
Yellow Starthistle	biological (<i>Eustenopus villosus</i> , <i>Chaetorellia australis</i> , <i>Larinus curtus</i> , <i>Bangasternus orientalis</i>), mechanical, chemical

Organic Farming Statistics

CROPS	NUMBER OF FARMS	ESTIMATED ACRES
Fruits, Vegetables and Nursery Products	6	1,852.3

**PLUMAS-SIERRA COUNTIES
DEPARTMENT OF AGRICULTURE**

2004 ANNUAL CROP REPORT

MISSION STATEMENT

The Plumas-Sierra Counties Department of Agriculture and Weights and Measures is entrusted with the mission to promote and protect the industry of agriculture within these two counties and their environment, and fostering confidence and equity in the marketplace through education and the fair and uniform enforcement of laws, regulations, and ordinances enacted by the people of the State of California and the Counties of Plumas and Sierra.

STAFF

Karl Bishop Agricultural Commissioner and
Sealer of Weights and Measures

Tim Gibson Agricultural and Weights
and Measures Inspector

Debbie Rexroth Administrative Assistant II

Linda Conrad Agricultural and Standards Technician

Margo Stratton Administrative Assistant