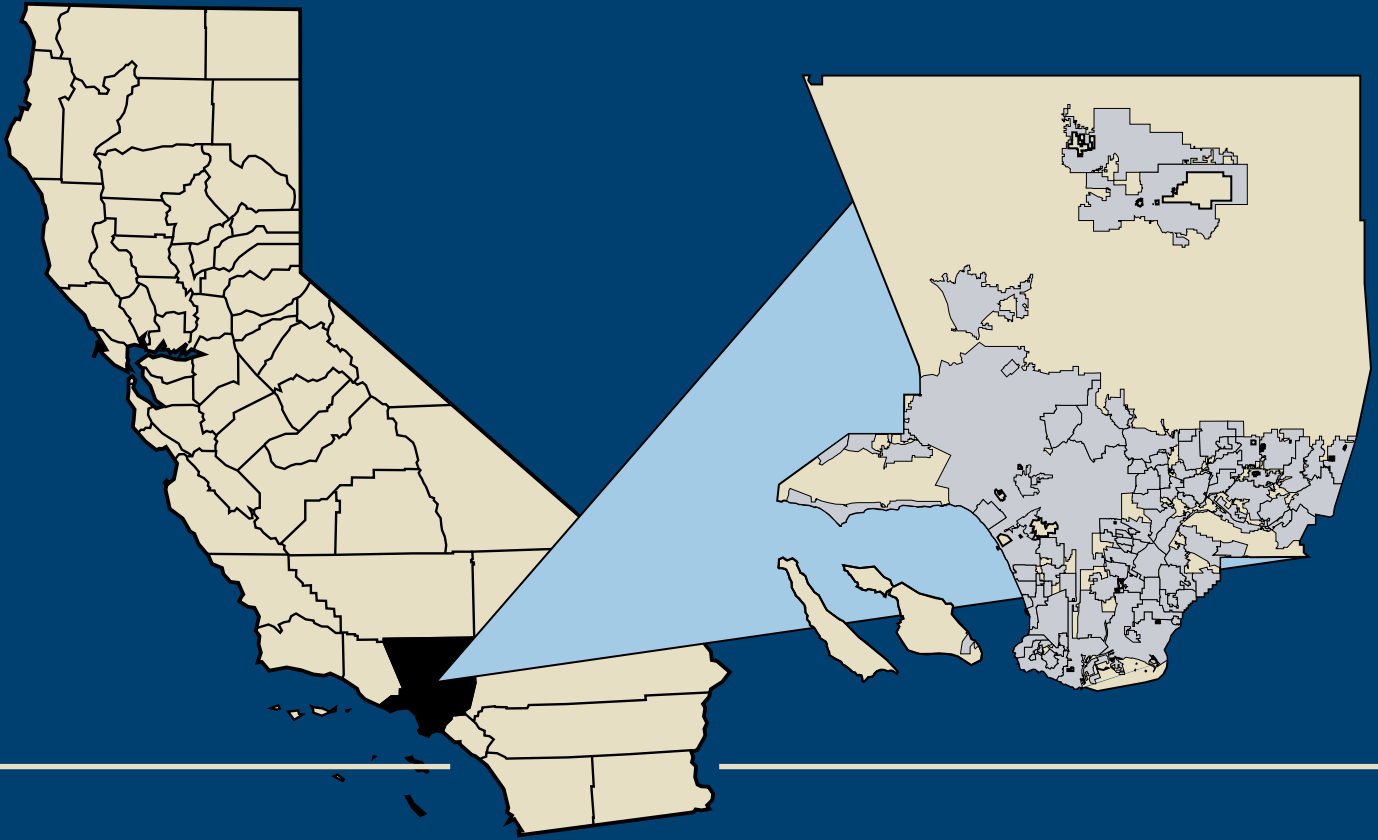


# "The Great Conduit of California Agriculture"



—2007—

**Los Angeles County Crop and Livestock Report**

# TABLE OF CONTENTS

|  |   |
|--|---|
| Letter to the Secretary .....          | 1 |
| Million Dollar Commodities.....        | 2 |
| Summary.....                           | 2 |
| Nursery Products .....                 | 3 |
| Cut Flowers and Decoratives .....      | 4 |
| Fruit and Nut Crops .....              | 4 |
| Vegetable Crops.....                   | 4 |
| Field Crops.....                       | 5 |
| Dairy and Livestock.....               | 5 |
| Apiary .....                           | 6 |
| Forest Crops.....                      | 6 |
| Sustainable Agriculture Reporting..... | 7 |
| Pest Detection Activities .....        | 8 |
| Pest Eradication Activities .....      | 8 |
| Biological Control Activities.....     | 8 |
| Pest Exclusion Activities .....        | 9 |

---

## On the cover:

The Grand Central Market, celebrating 90 years. The oldest and largest open-air market in the area, it gathers dozens of merchants offering a remarkable variety of fresh foods in the heart of downtown Los Angeles: fruits, vegetables, meats, herbs, spices, nuts, and candies. Fresh cut flowers and other plants are also offered, naturally, as nursery stock is Los Angeles County's top agricultural product.

Los Angeles County is the great conduit of California agriculture. Although many of our farms, ranches, groves, and nurseries have been replaced over the years by housing tracts and business parks, we're still an agricultural hub. The Ports of Los Angeles and Long Beach are an unparalleled American import/export gateway. Los Angeles International Airport handles enormous volumes of cargo. The Los Angeles Wholesale Produce Market, the largest operation of its kind in the nation, bustles with customers in the heart of Los Angeles.

Over ten million residents comprise a massive consumer base - and that isn't taking into account the commuters, business travelers, and tourists who pour into Los Angeles on a daily basis. More than one-hundred Certified Farmers Markets grace the landscape, most of them operating year-round. As a result of these realities, much of California's harvest flows to - and through - Los Angeles as our residents, visitors, and many others throughout the world enjoy a healthy, California-grown bounty.

---

## **DON'T BUG ME**



**Don't bring  
uninspected fruit  
into California...please.**

**Los Angeles County is home to over 10 million people, many of whom have roots in other countries near and far. Of course, our county also hosts millions of tourists annually. "Tourism Season" can bring exotic pest introductions as well. Our pest data is a reflection of these realities. Sometimes, it can feel like "Pest Season" year round.**



# Unpredictable Weather in “Sunny California”

You’ve always heard that Southern California is a place where the sun always shines and it is never really cold. Unfortunately, that is not quite true. We do have our seasons in Los Angeles County. In fact, during our winter, it is not uncommon to see snow on the highest mountain tops of our San Gabriel Mountain range. Well this winter, the unpredictable nature of weather hit us again with noteworthy freezing temperatures.



In the middle of January, a low pressure system from the Arctic brought freezing temperatures to much of the western United States. In Los Angeles County, January 17, 2007 saw honest-to-goodness snowflakes fall in the beach community of Malibu. Surfing and skiing in the same neighborhood? Well, not quite, but it sure felt cold enough for that to happen. In the Antelope Valley, on January 14, temperatures fell to three degrees Fahrenheit. Los Angeles County alone suffered over \$14 Million dollars in crop losses.

Ninety-five percent of the freeze damage, by dollar value loss, was in nursery stock. This was a disproportionately large loss given that nursery stock, the county’s top crop, represents about seventy percent of the total dollar value of our county’s agricultural output.

More severe freeze damage can be found in the county’s history. A 1949 document about a freeze in January of that year reports “widespread damage to young citrus and avocado trees throughout Los Angeles County.” That was back when Los Angeles was still the top county in agricultural production, and farms and orchards still covered places like the now densely populated San Fernando Valley.

In addition to 1949, Los Angeles County endured significant freezes in December 1990, January 1937, January 1922, and January 1913. Smudge pots were developed after a disastrous freeze in Southern California in June 1913 that wiped out a whole crop.

Let us hope that this really cold weather is just a very rare abnormality to an otherwise warm and sunny Southern California.

Photograph by Dan Berry (Top Right): Icicles, Children’s Garden, The Huntington Library, Art Collections, and Botanical Gardens



Antique Smudge Pot, Monrovia Nursery



Wind Machine, Norman’s Nursery



**Kurt E. Floren**  
Agricultural Commissioner  
Director of Weights and Measures

**COUNTY OF LOS ANGELES**

**Department of  
Agricultural Commissioner/  
Weights and Measures**

<http://acwm.lacounty.gov>



**Richard K. Iizuka**  
Chief Deputy

A.G. Kawamura, Secretary  
California Department of Food and Agriculture

and

The Honorable Board of Supervisors  
County of Los Angeles

Don Knabe - Fourth District

Gloria Molina - First District

Zev Yaroslavsky - Third District

Mark Ridley-Thomas - Second District

Michael D. Antonovich - Fifth District

**2007 CROP AND LIVESTOCK REPORT**

The total gross value of agricultural crops and commodities produced in Los Angeles County during 2007 was **\$253,368,000**. This value reflects a slight 6.48% decrease from last year's total of \$270,915,000. Although this is the third consecutive year that overall production values have decreased in Los Angeles County, impressive growth was seen in several agricultural commodity groups. Field crops (grain and alfalfa hay) were up by 12% due to stronger prices and increased yields. Dairy and livestock product values were up by 36.7%, due primarily to significant increases in prices for milk. Vine crop acreage increased significantly by 42.7% and total production value was up by 69.5%.

Nursery products remain the number one crop in Los Angeles County. The freeze of January 2007 negatively affected production of ornamental trees, indoor foliage plants, and other miscellaneous nursery products. Offsetting those losses, though, were increases in values and yields of bedding plants, ground covers, indoor flowering plants, and cut flowers. Also affected by the freeze were strawberries, cherries, various stone fruits, and citrus. Above-normal temperatures may have also contributed to losses in yields of fruit and nut crops. A decline in availability of bees and unfavorable dry weather conditions resulted in a significant decline in honey production during 2007.

Growers in Los Angeles County, and throughout the state are, as always, to be commended for their hard work and determination in competing with increasing imports, escalating production costs, and pressures from introduced pests.

I wish to express my sincere appreciation to each of the producers and individuals who provided information for this report. My thanks are extended to the skilled and dedicated staff of this department who continue to do an excellent job in serving and protecting the agricultural community and in compiling these important statistics.

Respectfully submitted,

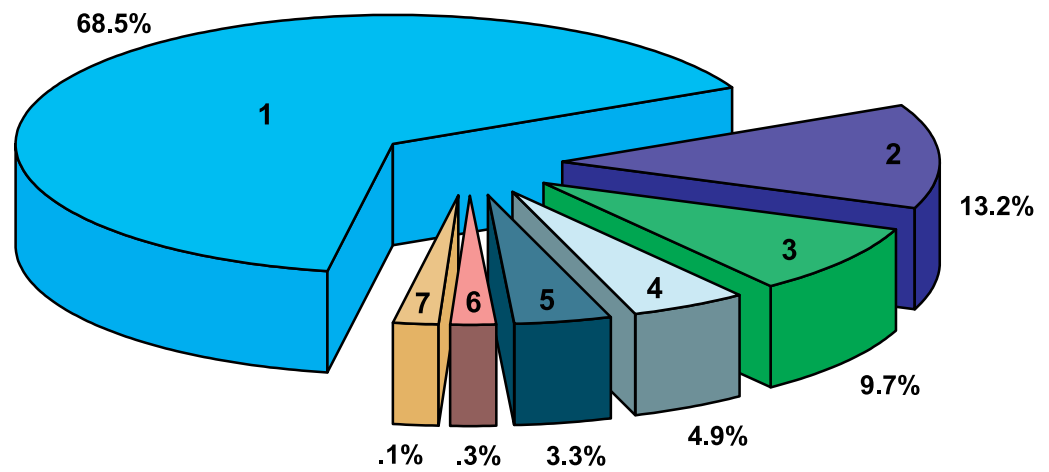
Kurt E. Floren  
Agricultural Commissioner/  
Director of Weights and Measures

# Million Dollar Commodities

|                                |               |                           |             |
|--------------------------------|---------------|---------------------------|-------------|
| 1. Ornamental Trees and Shrubs | \$104,681,000 | 8. Indoor Plants, Foliage | \$4,284,000 |
| 2. Bedding Plants              | \$43,144,000  | 9. Grapes                 | \$4,136,000 |
| 3. Root Vegetables             | \$27,707,000  | 10. Strawberries          | \$3,008,000 |
| 4. Orchard Fruit               | \$16,475,000  | 11. Ground Covers         | \$2,877,000 |
| 5. Alfalfa Hay                 | \$9,286,000   | 12. Vine Crops            | \$2,359,000 |
| 6. Dairy & Livestock           | \$8,513,000   | 13. Grain Hay             | \$1,768,000 |
| 7. Indoor Plants, Flowering    | \$4,425,000   |                           |             |

## SUMMARY

- 1 Nursery Products
- 2 Vegetable Crops
- 3 Fruits and Nuts
- 4 Field Crops
- 5 Livestock Production
- 6 Apiary and Forest Products
- 7 Cut Flowers & Decoratives



| Commodity                 | 2006                 | 2007                 |
|---------------------------|----------------------|----------------------|
| Nursery Products          | \$191,879,000        | \$173,580,000        |
| Cut Flowers & Decoratives | \$581,000            | \$734,000            |
| Fruits and Nuts           | \$26,674,000         | \$24,469,000         |
| Vegetable Crops           | \$33,146,000         | \$33,523,000         |
| Field Crops               | \$11,176,000         | \$12,327,000         |
| Livestock Production      | \$6,228,000          | \$8,513,000          |
| Apiary                    | \$1,211,000          | \$207,000            |
| Forest Products           | \$20,000             | \$15,000             |
| <b>TOTAL</b>              | <b>\$270,915,000</b> | <b>\$253,368,000</b> |



# Nursery Products

| Item                     | Year | Green House Square Feet | Field Acres  | Total Value            |
|--------------------------|------|-------------------------|--------------|------------------------|
| Ornamental Trees         | 2007 | 3,378,000               | 1,447        | \$104,681,000 ▼        |
|                          | 2006 | 4,172,000               | 1,507        | \$119,147,000          |
| Bedding Plants           | 2007 | 1,636,000               | 159          | \$43,144,000 ▲         |
|                          | 2006 | 1,617,000               | 152          | \$37,041,000           |
| Indoor Plants, Flowering | 2007 | 534,000                 | 2            | \$4,425,000 ▲          |
|                          | 2006 | 552,000                 | 2            | \$3,947,000            |
| Indoor Plants, Foliage   | 2007 | 408,000                 | 7            | \$4,284,000 ▼          |
|                          | 2006 | 435,000                 | 57           | \$6,302,000            |
| Ground Covers            | 2007 | 167,000                 | 26           | \$2,877,000 ▲          |
|                          | 2006 | 289,000                 | 42           | \$2,539,000            |
| Miscellaneous *          | 2007 | 203,000                 | 967          | \$14,169,000 ▼         |
|                          | 2006 | 279,000                 | 1,736        | \$22,903,000           |
| <b>TOTAL</b>             | 2007 | <b>6,326,000</b>        | <b>2,608</b> | <b>\$173,580,000 ▼</b> |
|                          | 2006 | 7,344,000               | 3,496        | \$191,879,000          |

\* Includes perennials, vegetable plants, bonsai plants, orchids, sod, palm trees, and cacti.

# Cut Flowers & Decoratives

| Item            | Year | Green House Square Feet | Field Acres | Total Value |
|-----------------|------|-------------------------|-------------|-------------|
| Miscellaneous * | 2007 | 384,000                 | 70          | \$734,000 ▲ |
|                 | 2006 | 249,000                 | 70          | \$581,000   |

\* Includes lilacs, pompoms, freesias, fruit blossoms, mums, snapdragons, yarrow, delphiniums, Christmas trees, and other miscellaneous.

| Item          | Year | Acreage | Production Per Acre   | Production Total | Unit | Value Per Unit | Total Value    |
|---------------|------|---------|---|------------------|------|----------------|----------------|
| Strawberries  | 2007 | 112     | 10.2  | 1,139            | Ton  | \$2,641        | \$3,008,000 ▼  |
|               | 2006 | 106     | 17.3  | 1,830            |      | \$2,711        | \$4,961,000    |
| Avocados      | 2007 | 53      | 1.2   | 64               | Ton  | \$1,450        | \$93,000 ▲     |
|               | 2006 | 60      | 1.7   | 100              |      | \$658          | \$66,000       |
| Cherries      | 2007 | 155     | 0.2   | 28               | Ton  | \$3,986        | \$112,000 ▼    |
|               | 2006 | 155     | 0.9   | 138              |      | \$4,500        | \$621,000      |
| Apples        | 2007 | 130     | 3.0   | 390              | Ton  | \$1,500        | \$585,000 ▼    |
|               | 2006 | 145     | 5.0   | 725              |      | \$1,500        | \$1,087,000    |
| Grapes        | 2007 | 329     | 3.9   | 1,273            | Ton  | \$3,249        | \$4,136,000 ▲  |
|               | 2006 | 341     | 3.4   | 1,149            |      | \$1,224        | \$1,407,000    |
| Orchard Fruit | 2007 | 1,080   | Includes nectarines, peaches, pears, plums, oranges, tangerines, apricots, lemons, and grapefruits. |                  |      |                | \$16,475,000 ▼ |
|               | 2006 | 1,088   |   |                  |      |                | \$18,474,000   |
| Miscellaneous | 2007 | 47      | Includes figs, pistachios, raspberries, other miscellaneous fruit, and nut crops.                   |                  |      |                | \$60,000 ▲     |
|               | 2006 | 28      |   |                  |      |                | \$58,000       |
| <b>TOTAL</b>  | 2007 | 1,906   |   |                  |      |                | \$24,469,000 ▼ |
|               | 2005 | 1,923   |   |                  |      |                | \$26,674,000   |



## FRUIT & NUT CROPS

| Item            | Year | Acreage | Production Per Acre   | Production Total | Unit | Value Per Unit | Total Value    |
|-----------------|------|---------|---|------------------|------|----------------|----------------|
| Root Vegetables | 2007 | 5,703   | Includes dry onions, carrots, potatoes, radishes, beets, turnips, and other root vegetables.                    |                  |      |                | \$27,707,000 ▼ |
|                 | 2006 | 5,629   |   |                  |      |                | \$29,446,000   |
| Herbs           | 2007 | 26      | Includes cilantro, parsley, chives, mint, thyme, and other herb vegetables.                                     |                  |      |                | \$486,000 ▼    |
|                 | 2006 | 40      |   |                  |      |                | \$1,143,000    |
| Table Greens    | 2007 | 25      | Includes spinach, kale, oriental specialties, and lettuce.  |                  |      |                | \$963,000 ▲    |
|                 | 2006 | 19      |   |                  |      |                | \$221,000      |
| Vine Crops      | 2007 | 147     | Includes cucumbers, green beans, melons, pumpkins, squash, tomatoes, watermelons, and zucchini.                 |                  |      |                | \$2,359,000 ▲  |
|                 | 2006 | 103     |   |                  |      |                | \$1,392,000    |
| Miscellaneous   | 2007 | 680     | Includes bell peppers, cacti, celery, chard, sweet corn, green onions, Mexican onions, and other miscellaneous. |                  |      |                | \$2,008,000 ▲  |
|                 | 2005 | 168     |   |                  |      |                | \$944,000      |
| <b>TOTAL</b>    | 2007 | 6,581   |   |                  |      |                | \$33,523,000 ▲ |
|                 | 2006 | 5,959   |   |                  |      |                | \$33,146,000   |

## VEGETABLE CROPS



| Item          | Year | Acreage    | Production Per Acre | Production Total | Unit | Value Per Unit | Total Value  |   |
|---------------|------|------------|---------------------|------------------|------|----------------|--------------|---|
| Alfalfa Hay   | 2007 | 5,804      | 8.6                 | 49,735           | Ton  | \$187          | \$9,286,000  | ▲ |
|               | 2006 | 5,455      | 8.5                 | 46,355           |      | \$180          | \$8,350,000  |   |
| Grain Hay     | 2007 | 3,002      | 3.8                 | 11,406           | Ton  | \$155          | \$1,768,000  | ▲ |
|               | 2006 | 3,500      | 3.2                 | 11,200           |      | \$140          | \$1,570,000  |   |
| Rangeland     | 2007 | 42,200     |                     |                  |      |                | \$480,000    | ▼ |
|               | 2006 | 45,000     |                     |                  |      |                | \$585,000    |   |
| Miscellaneous | 2007 | 1,395 *    |                     |                  |      |                | ** \$793,000 | ▲ |
|               | 2006 | 1,680 *    |                     |                  |      |                | ** \$671,000 |   |
| <b>TOTAL</b>  | 2007 | 10,201 *** |                     |                  |      |                | \$12,327,000 | ▲ |
|               | 2006 | 10,635 *** |                     |                  |      |                | \$11,176,000 |   |

\* Acreage excludes stubble.

\*\* Value includes irrigated pasture, sudan hay, oat hay, and grazing privileges on stubble.

\*\*\* Excluding rangeland and stubble.

## DAIRY & LIVESTOCK

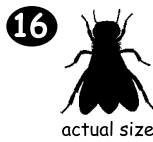
| Item | Year |  | Total Value |   |
|------|------|--|-------------|---|
|      | 2007 | Includes dairy cattle, beef cattle, hogs, goats, chickens, milk, goat milk, eggs, etc. | \$8,513,000 | ▲ |
|      | 2006 |  | \$6,228,000 |   |





A  
P  
P  
R  
I  
L  
A  
R  
Y

| Item          | Year | Production | Unit | Value Per Unit | Total Value |
|---------------|------|------------|------|----------------|-------------|
| Honey         | 2007 | 65,070     | Lb.  | \$2.05         | \$134,000 ▼ |
|               | 2006 | 849,923    |      | \$1.12         | \$941,000   |
| Beeswax       | 2007 | 115        | Lb.  | \$1.50         | \$1,000 ▼   |
|               | 2006 | 16,271     |      | \$3.44         | \$56,000    |
| Miscellaneous | 2007 |            |      |                | \$72,000 ▼  |
|               | 2006 |            |      |                | \$214,000   |
| <b>TOTAL</b>  | 2007 |            |      |                | \$207,000 ▼ |
|               | 2006 |            |      |                | \$1,211,000 |



Urban Insect Series  
**Honey Bee**  
*Apis mellifera*



Honey bees are social and live in colonies of up to 100,000 bees.

The familiar honey bee provides honey, beeswax, and pollination that produces fruits, vegetables and seeds. The honey bee's contribution to food production in the U.S. is worth almost \$15 billion annually. We've lost many bee colonies nationwide to the mysterious Colony Collapse Disorder.

**CATEGORY**  
INTRODUCED  
BENEFICIAL  
INSECT

Compliments of the Los Angeles County Department of Agricultural Commissioner/Weights and Measures

Kurt E. Floren, Commissioner/Director  
<http://acwm.co.la.ca.us>  
626.575.5471

Photos by Jim Wiseman



| Item       | Year | Total Value |
|------------|------|-------------|
| Firewood * | 2007 | \$15,000 ▼  |
|            | 2006 | \$20,000    |

\* Figures obtained from USDA Forest Services, Angeles National Forest.

FOREST PRODUCTS

# Sustainable Agriculture Reporting

| <b>ORGANIC FARMING STATISTICS</b> |                               |                    |
|-----------------------------------|-------------------------------|--------------------|
| <b><u>CROPS</u></b>               | <b><u>ESTIMATED ACRES</u></b> |                    |
|                                   | <b><u>2007</u></b>            | <b><u>2006</u></b> |
| Apples                            | 0.05                          | 1                  |
| Apricots                          | 8                             | 8                  |
| Avocados                          | 18                            | 5                  |
| Cantaloupes                       | 0                             | 0                  |
| Cactus Pears                      | 3                             | 3                  |
| Cherimoyas                        | 1                             | 1                  |
| Cherries                          | 1                             | 1                  |
| Citrus                            | 25                            | 24                 |
| Grapes                            | 28                            | 27                 |
| Herbs (including sprouts)         | 3                             | 3                  |
| Peaches                           | 13                            | 13                 |
| Pears                             | 0.02                          | 0                  |
| Persimmons                        | 1                             | 1                  |
| Pomegranates                      | 1                             | 1                  |
| Miscellaneous                     | 1                             | 1                  |
| Vegetables                        | 33                            | 22                 |
| <b>TOTAL</b>                      | <b>136.07</b>                 | <b>111</b>         |

| <b><u>YEAR</u></b> | <b><u>FARMS</u></b> | <b><u>ACRES</u></b> |
|--------------------|---------------------|---------------------|
| <b>2007</b>        | <b>18</b>           | <b>136.07</b>       |
| <b>2006</b>        | <b>16</b>           | <b>111</b>          |



## Pest Detection Activities

| PEST   | NUMBER OF TRAPS | SPECIMENS TRAPPED |
|--|-----------------|-------------------|
| Mexican Fruit Fly                                      | 4,987           | 1                 |
| Mediterranean Fruit Fly                                | 5,029           | 20                |
| Melon Fly  | 5,020           | 0                 |
| Oriental Fruit Fly                                     | 5,020           | 16                |
| Guava Fruit Fly (traps shared with Oriental Fruit Fly) |                 | 3                 |
| Gypsy Moth   | 3,780           | 1                 |
| Asian Gypsy Moth (traps shared with Gypsy Moth)        |                 | 2                 |
| Japanese Beetle  | 3,093           | 5                 |
| Khapra Beetle  | 287             | 0                 |
| European Pine Shoot Moth                               | 10              | 0                 |
| European Corn Borer                                    | 4               | 0                 |
| Light Brown Apple Moth                                 | 4,987           | 1                 |
| <u>TOTAL</u>   | <u>32,217</u>   | <u>49</u>         |

## Pest Eradication Activities

| PEST                    | METHOD  | SCOPE of PROGRAM                                |
|-------------------------|---|---|
| Mediterranean Fruit Fly | Ground bait and increased Mediterranean Fruit Fly release | 1 treatment area (continued from 2006)          |
| Mexican Fruit Fly       | Ground bait and sterile Mexican Fruit Fly release         | 1 treatment area                                |
| Oriental Fruit Fly      | Male annihilation   | 3 treatment areas                               |
| Guava Fruit Fly         | Male annihilation   | 1 treatment area                                |
| Mediterranean Fruit Fly | Continued preventative program: sterile Medfly release    | Approximately 13.4 billion steriles released    |
| Red Imported Fire Ant   | Treatments completed<br>Survey Work                       | 960 properties<br>13,289 properties/9,468 acres |

## Biological Control Activities

| PEST                    | AGENT / MECHANISM | SCOPE of PROGRAM                      |
|-------------------------|-------------------|---------------------------------------|
| Mediterranean Fruit Fly | Sterile Release   | 13,451,128,063 sterile flies released |

# Pest Exclusion Activities

| PEST EXCLUSION VIOLATION                 | # of VIOLATIONS ISSUED |
|--|------------------------|
| Infested/Presumed Infested               | 457                    |
| Markings                                 | 16                     |
| Burrowing and Reniform Nematodes         | 1                      |
| Caribbean Fruit Fly                      | 4                      |
| Cedar Apple Rust                         | 1                      |
| Cherry Fruit Fly                         | 0                      |
| Citrus Canker                            | 2                      |
| Citrus Pests                             | 7                      |
| Colorado Potato Beetle                   | 0                      |
| Failure to Hold                          | 22                     |
| Federal (Hawaiian) Quarantine            | 6                      |
| Imported Fire Ant                        | 0                      |
| Japanese Beetle                          | 1                      |
| Mishandling                              | 0                      |
| Plum Curculio and Blueberry Maggot       | 0                      |
| Sweet Potato Weevil                      | 0                      |
| Gypsy Moth                               | 1                      |
| Walnut and Pecan Pests                   | 1                      |
| Chestnut Bark disease & Oak Wilt Disease | 1                      |
| <b>TOTAL</b>                             | <b>520</b>             |



| PEST INTERCEPTED<br><i>Genus species (Common Name)</i>          | MATERIAL            | SOURCE*   | # of INTERCEPTIONS |
|---|---------------------|-----------|--------------------|
| <b>Entomology Laboratory</b>                                    |                     |           |                    |
| <i>Abgrallaspis / Diaspidiotus spp. complex</i> (Armored scale) | Avocado             | Quar      | 27                 |
| <i>Acutaspis albopicta</i> (Albopicta scale)                    | Cut foliage/Avocado | Quar      | 3                  |
| <i>Agallia sp.</i> (Leafhopper)                                 | Cut foliage         | Quar      | 7                  |
| <i>Aleuroclava jasmini</i> (Jasmine whitefly)                   | Cut foliage         | Quar      | 1                  |
| <i>Aleurodicus dispersus</i> (Spiraling whitefly)               | Cut foliage         | Quar      | 33                 |
| <i>Aleurotrachelus sp.</i> (Whitefly)                           | Cut foliage/Palm    | Quar/Nurs | 16                 |
| <i>Anoplolepis gracilipes</i> (Long-legged ant)                 | Cut foliage         | Quar      | 2                  |
| <i>Aonidiella orientalis</i> (Oriental scale)                   | Cycad               | Quar      | 1                  |
| <i>Aspidiotus destructor</i> (Coconut scale)                    | Cut foliage         | Quar      | 24                 |
| <i>Aspidiotus excisus</i> (Aglaonema scale)                     | Ti leaves           | Quar      | 1                  |
| <i>Atractomorpha sinensis</i> (Slant-faced grasshopper)         | Basil               | Quar      | 6                  |
| <i>Aulacaspis yasumatsui</i> (Cycad aulacaspis scale)           | Cycad               | Quar      | 13                 |
| <i>Bradybaena similaris</i> (Snail)                             | Cut foliage         | Quar      | 32                 |
| <i>Cacopsylla sp.</i> (Psyllid)                                 | Pittosporum         | Nurs      | 2                  |
| <i>Camponotus sp.</i> (Carpenter ant)                           | Fern leaves         | Quar      | 1                  |
| <i>Ceroplastes rusci</i> (Fig wax scale)                        | Palm                | Quar      | 3                  |



# Pest Exclusion Activities

| PEST INTERCEPTED<br><i>Genus species</i> (Common name)               | MATERIAL          | SOURCE*   | # of INTERCEPTIONS |
|--|-------------------|-----------|--------------------|
| <b>Entomology Laboratory</b>   |                   |           |                    |
| <i>Chrysodeixis eriosoma</i> (Green garden looper)                   | Cut foliage       | Quar      | 20                 |
| <i>Chrysophtharta m-fuscum</i> (Eucalypus leaf beetle)               | Nursery plans     | Nurs      | 1                  |
| <i>Coccus acutissimus</i> (Slender soft scale)                       | Cut foliage       | Quar      | 1                  |
| <i>Coccus sp.</i> (Soft scale)                                       | Cut foliage       | Quar      | 6                  |
| <i>Conocephalus saltator</i> (Katydid)                               | Cut foliage       | Quar      | 2                  |
| <i>Cylas formicarius</i> (Sweet potato weevil)                       | Ginger            | Quar      | 1                  |
| <i>Darna pallivitta</i> (Limaconid morth)                            | Dracaena          | Quar      | 1                  |
| <i>Dialeurodes sp.</i> (Whitefly)                                    | Shefflera         | Quar      | 1                  |
| <i>Diaphania nitidalis</i> (Pickelworm)                              | Cucumber          | Quar      | 12                 |
| <i>Diploptera punctata</i> (Pacific beetle cockroach)                | Cut foliage       | Quar      | 4                  |
| <i>Disclisoprocta stellata</i> (Bougainvillea looper)                | Bougainvillea     | Public    | 2                  |
| <i>Empoasca sp.</i> (Leafhopper)                                     | Cut foliage       | Quar      | 3                  |
| <i>Exillis sp.</i> (Fungus weevil)                                   | Malongai          | Quar      | 1                  |
| <i>Ferrisia virgata</i> (Striped mealybug)                           | Betel leaves      | Quar      | 2                  |
| <i>Geotomus pygmaeus</i> (Burrowing bug)                             | Curry leaves      | Quar      | 1                  |
| <i>Graptostethus manillensis</i> (Lygaeid bug)                       | Cut foliage       | Quar      | 2                  |
| <i>Gyponana germari</i> (Leafhopper)                                 | Cut foliage       | Quar      | 40                 |
| <i>Halyomorpha halys</i> (Brown mamorted stink bug)                  | Ornamental plants | Public    | 1                  |
| <i>Homalodisca vitripennis</i> (Glassy-winged sharpshooter - adults) | Nursery plants    | Nurs      | 563                |
| <i>Homalodisca vitripennis</i> (Glassy-winged sharpshooter - eggs)   | Nursery plants    | Nurs      | 489                |
| <i>Ishnapsis longirostris</i> (Black thread scale)                   | Cut foliage       | Quar      | 2                  |
| <i>Kallitaxila granulata</i> (Planthopper)                           | Cut foliage       | Quar      | 67                 |
| <i>Lepidosaphes rubrovittata</i> (Armored scale)                     | Palm leaves       | Quar      | 3                  |
| <i>Lepidosaphes stepta</i> (Armored scale)                           | Palm leaves       | Quar      | 1                  |
| <i>Meghimatium striatum</i> (Slug)                                   | Draceana          | Quar      | 1                  |
| <i>Melormenis sp.</i> (Planthopper)                                  | Curry leaves      | Quar      | 2                  |
| <i>Milviscutulus mangiferae</i> (Mango shield scale)                 | Cut foliage       | Quar      | 2                  |
| <i>Nipaecoccus sp.</i> (Coconut mealybug)                            | Palm              | Quar/Nurs | 3                  |
| <i>Nysius sp.</i> (Lygaeid bug)                                      | Cut foliage       | Quar      | 27                 |
| <i>Oceanides sp.</i> (Lygaeid bug)                                   | Herbs             | Quar      | 1                  |
| <i>Ochetellus glaber</i> (Ant)                                       | Cut foliage       | Quar      | 4                  |
| <i>Oliarus sp.</i> (Cixiid planthopper)                              | Cut foliage       | Quar      | 1                  |
| <i>Oncometopia sp.</i> (Leafhopper)                                  | Dracaena          | Quar      | 1                  |
| <i>Orchidophilus sp.</i> (Weevil)                                    | Cut foliage       | Quar      | 2                  |
| <i>Palmicultor lumpurensis</i> (Mealybug)                            | Bamboo            | Nurs      | 1                  |
| <i>Paraleyrodes sp.</i> (Whitefly)                                   | Betel leaves      | Quar      | 1                  |



# Pest Exclusion Activities



| <b>PEST INTERCEPTED</b><br><i>Genus species (Common name)</i>   | <b>MATERIAL</b>  | <b>SOURCE*</b> |    |
|---|------------------|----------------|----|
| <b>Entomology Laboratory</b>                                    |                  |                |    |
| <i>Phaneroptera furcifera</i> (Katydid)                         | Cut foliage      | Quar           | 4  |
| <i>Pheidole megacephala</i> (Big headed ant)                    | Cut foliage      | Quar           | 15 |
| <i>Physomerus grossipes</i> (Leaf-footed bug)                   | Betel leaves     | Quar           | 1  |
| <i>Pinnaspis buxi</i> (Boxwood scale)                           | Cut foliage/Palm | Quar/Nurs      | 95 |
| <i>Pinnaspis strachani</i> (Lesser snow scale)                  | Cut foliage      | Quar           | 10 |
| <i>Plautia stali</i> (Oriental stink bug)                       | Basil            | Quar           | 3  |
| <i>Prociphilus sp.</i> (Aphid)                                  | Elaeagnus        | Nurs           | 1  |
| <i>Protopulvinaria pyriformis</i> (Pyriform scale)              | Nursery plants   | Nurs           | 9  |
| <i>Pseudaonidia trilobitiformis</i> (Trilobe scale)             | Curry leaves     | Quar           | 2  |
| <i>Pseudaulacaspis cockerelli</i> (Magnolia white scale)        | Cut foliage/Palm | Quar/Nurs      | 2  |
| <i>Pseudococcus cryptus</i> (Mealybug)                          | Betel leaves     | Quar           | 1  |
| <i>Pseudococcus jackbeardsleyi</i> (Mealybug)                   | Basil            | Quar           | 2  |
| <i>Pseudococcus landloi</i> (Mealybug)                          | Lalot leaves     | Quar           | 1  |
| <i>Pseudococcus odermatti</i> (Mealybug)                        | Cut leaves       | Quar           | 1  |
| <i>Pseudococcus sp.</i> (Mealybug)                              | Cut leaves       | Quar           | 4  |
| <i>Pseudoparlatoria parlatorioides</i> (False parlatoria scale) | Cut foliage      | Quar           | 3  |
| <i>Pulvinaria psidii</i> (Green shield scale)                   | Nursery plants   | Nurs           | 3  |
| <i>Pulvinaria urticae</i> (Urban soft scale)                    | Betel leaves     | Quar           | 3  |
| <i>Rhizoecus hibisci</i> (Soil mealybug)                        | Palm             | Quar           | 1  |
| <i>Scapteriscus borellii</i> (Southern mole cricket)            | Turf             | Public         | 3  |
| <i>Selenaspis articulatus</i> (Rufous scale)                    | Cut foliage      | Quar           | 3  |
| <i>Sinoxylon sp.</i> (Powderpost beetle)                        | Cut foliage      | Quar           | 1  |
| <i>Solenopsis geminata</i> (Tropical fire ant)                  | Cut foliage      | Quar           | 8  |
| <i>Sybra alternans</i> (Long horned beetle)                     | Cut foliage      | Quar           | 8  |
| <i>Tarophagus colocasiae</i> (Taro planthopper)                 | Cut foliage      | Quar           | 2  |
| <i>Technomyrmex albipes</i> (White footed ant)                  | Cut foliage      | Quar           | 78 |
| <i>Trigonidium sp.</i> (Cricket)                                | Betel leaf       | Quar           | 1  |
| <i>Trigonidomorpha sjostedti</i> (Cricket)                      | Ginger root      | Quar           | 2  |
| <i>Velataspis sp.</i> (Armored scale)                           | Palm leaves      | Quar           | 1  |
| <i>Veronicella sp.</i> (Slug)                                   | Cut foliage      | Quar           | 4  |
| <i>Vinsonia stellifera</i> (Stellate scale)                     | Cut foliage      | Quar           | 7  |
| <i>Xylosandrus sp.</i> (Bark beetle)                            | Cut foliage      | Quar           | 1  |



**TOTAL**

**1,734**

\*SOURCE: Nurs: Nursery Pub: Public Quar: Quarantine



# Pest Exclusion Activities

Plant Pathology Laboratory

*Alternanthera Philoxeroides* (Alligator weed)

River

Pub/Quar

2

TOTAL

2



18

Melon Fly

18



actual size

Urban Insect Series

Melon Fly

*Bactrocera cucurbitae*



Fruit Fly Maggots

Never bring uninspected fruits or vegetables to CA from other states or countries. They might harbor pests like Melon Fly, whose maggots would make quick work of melons, squash, pumpkins, peppers, and green beans if the fly got a foothold in LA County. Melon Fly already infests Hawaii and SE Asia.

**CATEGORY**  
**EXTREMELY**  
**DESTRUCTIVE**  
**EXOTIC PEST**

Compliments of the Los Angeles County Department of  
Agricultural Commissioner/Weights and Measures

Kurt E. Floren, Commissioner/Director

<http://acwm.co.la.ca.us>

626.575.5471

Photos by Dr. Natalia von Ellenrieder

To request a complete set of trading cards, please call Cindy Werner at 626-459-8866

## ACKNOWLEDGEMENTS

We sincerely thank Maynard Johnson with El Monte Printing, Inc. for the design layout of this year's crop report. A special word of thanks to all who assisted in creating this edition of the crop report: Public Information Officer Kenneth Pellman who edited the report; Cover photographs: Inspector Cynthia Werner and the Los Angeles County Farm Bureau for crop photographs; Dr. Gevork Arakelian, Dr. Jerry Turney, and Jim Wiseman for the insect and plant photographs; Inspectors Erineo Ada, Christine Belden, Liza Chang, Ibrahim Abdel-Fatah, Margot Lowe, Gary Mork, Adrian Zavala, Deputy Agricultural Commissioner/Sealer Jim Wiseman, the Entomology Laboratory Staff, Dr. Gevork Arakelian and Sonya Carlos, and Plant Pathologist Dr. Jerry Turney who assisted in gathering and compiling the statistics; and Administrative Assistant Karen Wong, who generated the completed statistical report. Particular thanks to Richard G. Sokulsky, Deputy Agricultural Commissioner/Sealer, for supervising the completion of this year's report.

For a copy of this report, visit our website at: <http://acwm.lacounty.gov>



Icicles are created during sprinkler irrigation to insulate the plant tissues from further frost damage.  
(Frost photographs courtesy of The Huntington Library, Art Collections, and Botanical Gardens)



Department of  
Agricultural Commissioner/  
Weights and Measures  
County of Los Angeles  
12300 Lower Azusa Road  
Arcadia, California 91006