



**LAKE COUNTY
2005
CROP REPORT**



A.G Kawamura, Secretary
California Department of Food and Agriculture
And
The Honorable Board of Supervisors of Lake County

August 29, 2006

Gentlemen:

It is my pleasure to present the Lake County Agricultural Report for the year 2005 in accordance with Sections 2272 and 2279 of the California Agriculture Code. The gross value of Lake County agricultural production for 2005 was \$61,542,811; this is almost unchanged from 2004. The increase in the value of wine grapes countered decreases in all other agricultural categories except livestock and poultry products. **This report represents gross agricultural receipts and does not reflect production costs or net income to the producers.**

The gross value of wine grapes increased 17% in 2005. The total tonnage harvested increased by 13% and the grape acreage increased 3%. In addition, the tons per acre and the price per ton also increased .

In 2005, the gross value of pears decreased 28%. The total production decreased 38% and total pear acreage was reduced by 75 acres. Overall, prices per ton were up 15% from the previous year.

The gross value of walnuts decreased 44% from 2004. Total production decreased by 60%, the price per ton increased 29%, and the acreage remained virtually unchanged. Decreases in pear and walnut production in 2005 were due to inclement weather during critical times in the growing season.

There were decreases in the following agricultural categories:

Forest products (52%), nursery products (12%) livestock production (8%) vegetable production (4%) and field crops (2%) . Livestock and poultry products increased 4% in value. The decline in field crops was due to excessive rainfall in the spring.

The gross value of pears in this report represents the value of the pears after they are packed and processed. The figures do not indicate the value of the pears at the time of harvest or the gross income of the producers. The gross values of all other commodities in this report represent the value of each commodity at the time of harvest.

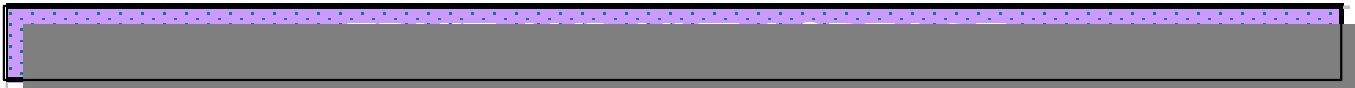
I would like to thank our staff Biologists Kris Eutenier and Dana Thibeau for their efforts in compiling the information, providing the photographs, and working on the layout of the 2005 Crop Report. I wish to express my appreciation to the many individuals and organizations who contributed to making this report possible.

Respectfully submitted,

Steve Hajik
Agricultural Commissioner

COMMODITY	MARKET TYPE	YEAR	PRODUCTION (Tons)	YIELD (Tons/Acre)	RETURNS \$/Ton ¹	GROSS VALUE ¹	BEARING ACRES
WINE GRAPES							
Whites		2005	11,882	5.1	\$842	\$10,008,900	2,314
		2004	9,620	4.3	\$822	\$7,911,244	2,256
Reds		2005	20,113	3.9	\$1,399	\$28,140,200	5,204
		2004	18,252	3.8	\$1,306	\$23,839,411	4,820
TOTAL ALL WINE GRAPES		2005	31,995	4.3	\$1,192	\$38,149,100	7,518
		2004	27,872	3.9	\$1,139	\$31,751,000	7,076
PEARS							
Bartlett Including Red	Fresh	2005	11,060		\$776	\$8,581,000	
		2004	22,783		\$566	\$12,902,000	
	Cannery	2005	12,987		\$218	\$2,829,000	
		2004	17,343		\$192	\$3,332,000	
	Baby Food	2005	809		\$69	\$55,900	
		2004	1,449		\$72	\$103,700	
	By-products ²	2005	3,876		\$34	\$130,800	
		2004	5,857		\$67	\$390,800	
Total Bartlett		2005	28,732	12.3	\$404	\$11,597,000	2,330
		2004	47,432	19.9	\$353	\$16,729,000	2,383
Winter & Asian (Includes Bosc, Comice, Seckel)	Fresh	2005	948		\$911	\$864,000	
		2004	1,173		\$640	\$751,000	
	By-products	2005	227		\$20	\$4,535	
		2004	205		\$20	\$4,100	
Total Winter & Asian		2005	1,175	11.3	\$739	\$869,000	104
		2004	1,378	11.2	\$548	\$755,000	123
Red Pears other than Bartlett (Starkrimson)	Fresh	2005	334		\$1,167	\$390,072	
		2004	503		\$684	\$344,000	
	By-products	2005	149		\$54	\$8,086	
		2004	205		\$12	\$2,440	
Total Reds		2005	483	10.1	\$824	\$398,200	48
		2004	708	13.9	\$489	\$346,400	51
TOTAL ALL PEARS		2005	30,390	12.2	\$423	\$12,864,000	2,482
		2004	49,518	19.4	\$360	\$17,830,000	2,557
WALNUTS							
Irrigated Walnuts		2005	456	0.48	\$1,756	\$800,700	950
		2004	555	0.98	\$1,243	\$689,900	565
Non-Irrigated Walnuts		2005	367	0.21	\$1,756	\$645,000	1,745
		2004	1,529	0.71	\$1,243	\$1,901,000	2,141
TOTAL ALL WALNUTS		2005	823	0.31	\$1,756	\$1,445,700	2,695
		2004	2,084	0.77	\$1,243	\$2,590,900	2,706
MISCELLANEOUS FRUITS & NUTS							
MISCELLANEOUS FRUITS & NUTS ³		2005				\$142,241	86
		2004				\$244,000	218
TOTAL ALL FRUIT		2005				\$52,601,000	12,781
		2004				\$52,416,000	12,557

¹This is gross value and does not represent net return to the producer.



CROP		BEARING ACRES	NON-BEARING ACRES	TOTAL
PEARS	BARTLETT	2,330	0	2,330
	WINTER & ASIAN	104	3	107
	REDS	48	0	48
	TOTAL	2,482	3	2,485
WINE GRAPES	WHITES	2,314	433	2,747
	REDS	5,204	578	5,782
	TOTAL	7,518	1,011	8,529
WALNUTS		2,695	77	2,772
MISCELLANEOUS ¹		86		86
TOTAL		12,781	1,091	13,872

¹Includes apples, peaches, strawberries, melons, dried fruits, olives, etc.

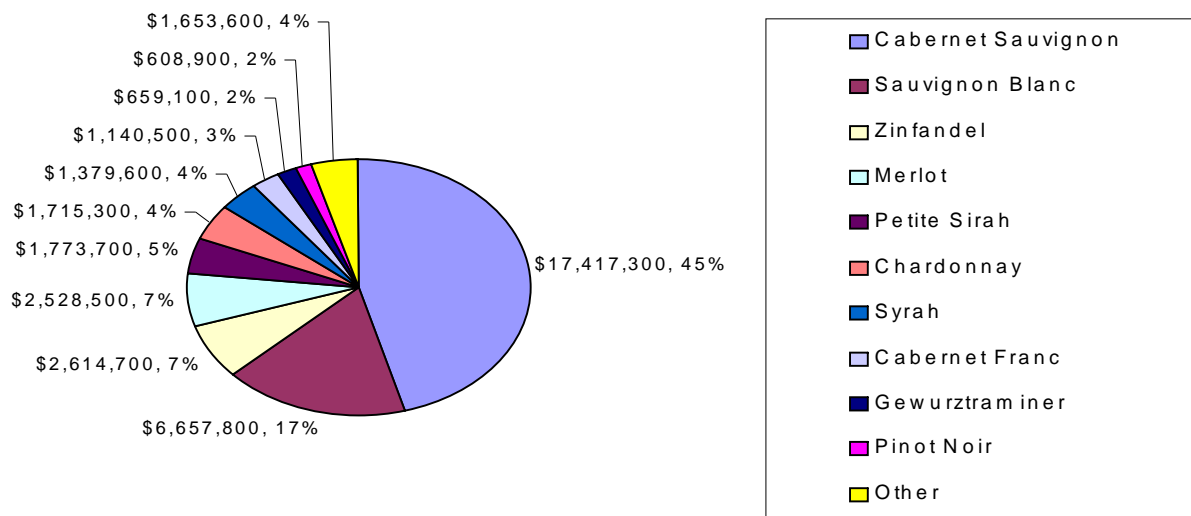


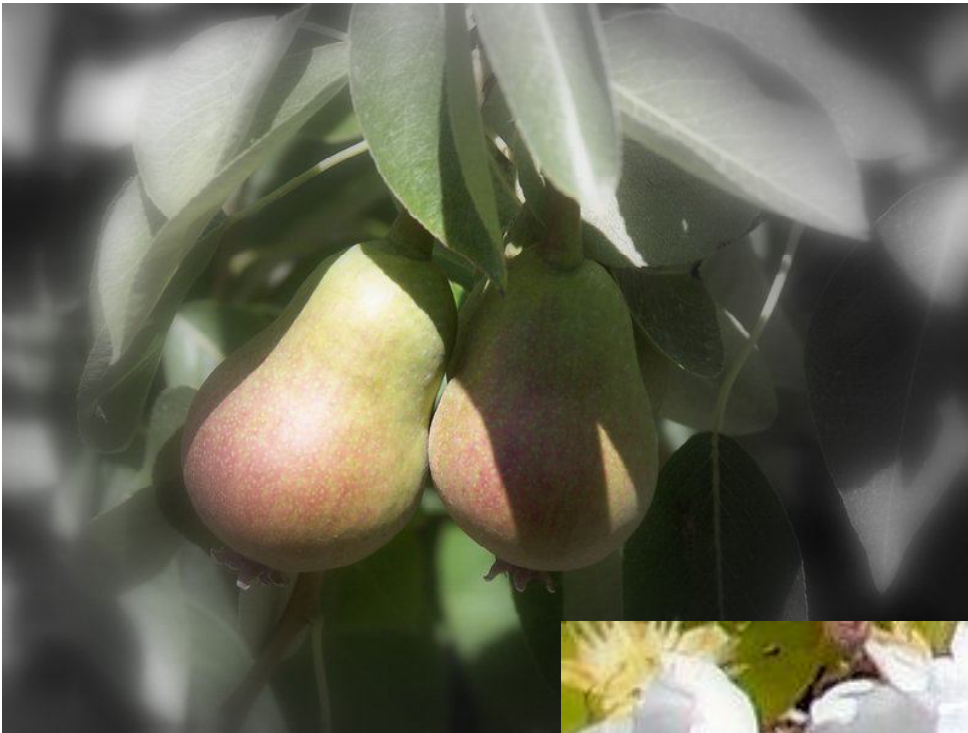
Variety	Production (Tons)	Returns (\$/Ton)	Gross Value
Cabernet Sauvignon	11,431	\$1,524	\$17,417,300
Sauvignon Blanc	7,885	\$844	\$6,657,800
Zinfandel	2,621	\$998	\$2,614,700
Merlot	2,263	\$1,117	\$2,528,500
Petite Sirah	1,296	\$1,368	\$1,773,700
Chardonnay	2,034	\$843	\$1,715,300
Syrah	1,167	\$1,182	\$1,379,600
Cabernet Franc	593	\$1,924	\$1,140,500
Gewurztraminer	824	\$800	\$659,100
Pinot Noir	300	\$2,030	\$608,900
Muscat Blanc	370	\$1,114	\$412,400
Semillon	390	\$764	\$298,000
Petit Verdot	126	\$1,360	\$171,600
Viognier	125	\$1,275	\$159,200
Malbec	84	\$1,627	\$137,300
Barbera	74	\$1,542	\$114,400
Tempranillo	51	\$1,683	\$85,000
Other	362	\$763	\$275,800
Total	31,995	\$1,192	\$38,149,100





TOP 10 WINE GRAPE VARIETIES





*The Life of a Lake County Pear
From Blossom to Market*



BLOSSOMS

PETAL FALL



FRUIT SET



TURN DOWN



MATURE RIPE PEARS



SPRING TIME
FROST PROTECTION
WIND OR SPRINKLERS



WINTER TIME
PEARS NEED ABOUT 1000
HOURS OF COLD TIME



WINTER AND EARLY SPRING
TREES ARE PRUNED



WHEN THE PRESSURE IS BE-
TWEEN 18 AND 20 LBS, AND
SUGAR IS AROUND 10 PERCENT
BRUX,
PEARS ARE READY TO HARVEST



PEARS ARE PICKED
BY HAND, TO AVOID
BRUISING



PEARS ARE READY TO
TRANSFER FROM ORCHARD
TO PACKING SHED





BIN DUMP
PEARS GO THROUGH
WASH, THEN ON TO SORTING

SORTING TABLE
SORTED FOR FRESH PACK,
CANNERY, BABY FOOD AND CULLS



SORTING AND
RESORTING FOR
CANNERY, BABYFOOD
AND CULLS

PACKED BINS
READY FOR CANNERY,
AND BABY FOOD



SIZER, SORTS BY WEIGHT OR
SIZE SO PACKED BOXES
HAVE THE SAME SIZE PEARS

HAND WRAPPED AND PACKED, OR
MACHINE TIGHT FILL PACK



PACKED BOXES
READY FOR FINAL
SORTING BY SIZE
ON TO PALLETS

PALLETS READY
FOR COLD
STORAGE AND
SHIPMENT TO
MARKET



LAKE COUNTY PEAR HISTORY



1962 Pear Orchards in Kelseyville.
Gaddy Lane towards Kelseyville town.
Field's and Benson's Orchards on right

Pear orchards 1962
Merrit Road on left, towards Hwy 29
Hansen Orchard in foreground



Weed spraying



Aerial Spraying of Pears, Walnuts



Original Agricultural Office in Kelseyville



Weed Spraying by Agricultural Dept. 1960's



1938 Laughin Place, steaming pear trees for coddling moth larvae



New Agricultural Office in Lakeport, 1973-4

Don Eutenier, Farmer and

Pres. of Farm Bureau (doing the ribbon cutting).

Junior Wilds, Farmer and Supervisor, (white jacket, in front)

Chet Hemstreet, Farm Advisor (back right)

Charles Geoble, Agricultural Commissioner (back left)

HISTORICAL FACTS ABOUT LAKE COUNTY PEAR INDUSTRY

The first pears were planted in Lake County in the 1880's. The industry was viable by 1919 with a crop of 800 tons from 700 planted acres.

By 1930 there were 6,000 planted acres, with a production of 19,000 tons.

By 1964 there were 4,800 planted acres producing 62,500 tons.

The highest production year was 1982 with 86,754 tons from 5,480 acres.

The lowest production year was 1932 with just .63 tons per acre, producing 4,030 total tons.

2004 there were 2,557 planted acres with a production of 49,518 tons.

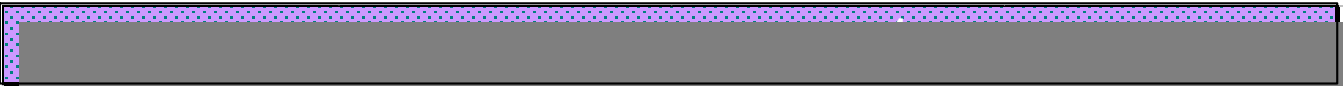
One of the oldest pear trees in Lake County, the "Grandfather Tree" located on the Henderson Ranch on Gaddy Lane, Kelseyville. Planted in the late 1800's. Shown by Diane Henderson





COMMODITY	YEAR	GREENHOUSE SQUARE FEET	FIELD ACRES	\$ VALUE
NURSERY ¹	2005	76,000	85	\$3,644,400
	2004	70,800	78	\$4,124,100

¹Includes turf and cut flowers



ITEM	YEAR	MBF ²	VALUE ³
Timber Yield	2005	100	\$29,520
	2004	486	\$62,530

¹Values furnished by the California State Board of Equalization
²Quantity of timber cut and scaled (Thousand Board Feet)
³Value of timber immediately before cutting



COMMODITY	YEAR	ACREAGE	UNIT	\$/UNIT	\$ VALUE
IRRIGATED PASTURE	2005	2,000	Acre	\$120.00	\$240,000
	2004	1,675	Acre	\$110.40	\$184,920
RANGE	2005	90,000	Acre	\$7.00	\$630,000
	2004	90,000	Acre	\$5.00	\$450,000
MISCELLANEOUS ¹	2005	3,624	Acre		\$1,398,058
	2004	2,874	Acre		\$1,450,000
TOTALS	2005	95,624			\$2,268,058
	2004	96,068			\$2,320,000

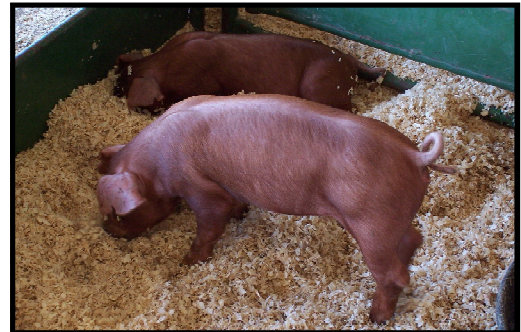
¹Includes alfalfa, oat hay, grass hay, wild rice.



COMMODITY	YEAR	NO. OF HEAD	TOTAL CWT ¹ (LIVE WT.)	\$ PER CWT	VALUE
CATTLE AND CALVES	2005	3,618	28,941	\$90.50	\$2,619,100
	2004	3,982	31,858	\$88.20	\$2,809,911
MISCELLANEOUS ²	2005				\$45,946
	2004				\$80,900
TOTALS	2005				\$2,665,000
	2004				\$2,891,000

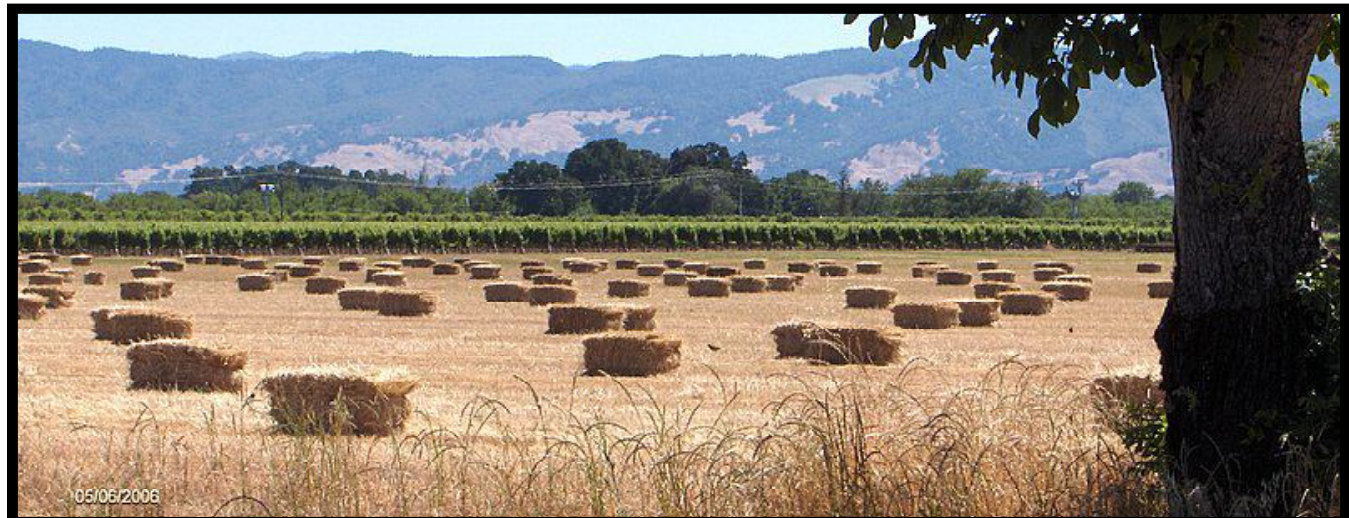
¹CWT = 100 lbs.

²Includes goats, sheep, hogs, and rabbits.



COMMODITY	YEAR	\$ VALUE
MISCELLANEOUS ¹	2005	\$152,510
	2004	\$145,800

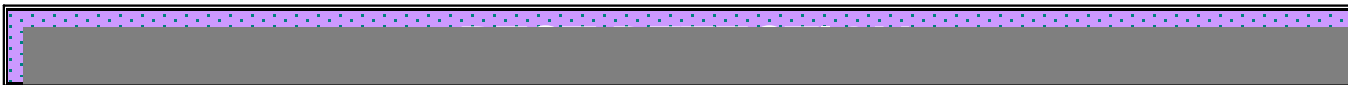
¹Includes apiary, eggs, cheese, and wool





COMMODITY	YEAR	ACRES	VALUES
Miscellaneous Vegetables ¹	2005	21	\$182,323
	2004	50	\$200,000

¹Includes pumpkins, beans, sweet corn, garlic, herbs, peas, potatoes, squash, tomatoes, etc.



TRAPS DEPLOYED	PROGRAM HOURS
85	612 (Up 250%)



URBAN TRAPS	PROGRAM HOURS
302	1595 (Up 40%)

¹Includes traps for Mediterranean Fruit Fly, Oriental Fruit Fly, Melon Fly, Gypsy Moth and Japanese Beetle



URBAN TRAPS	CROPLAND/NURSERY TRAPS	PROGRAM HOURS
110	63	926



NUMBER OF INSPECTIONS	PROGRAM HOURS
98	481.5



BIOLOGICAL CONTROL

Biological Control is the deliberate use of natural enemies to suppress or manage pest populations at acceptable levels.

PEST	AGENT/MECHANISM	SCOPE OF PROGRAM
Bull Thistle	Gall Fly	2 Sites, unknown establishment
Italian Thistle	Seed Head Weevil	Generally distributed
Klamath Weed	Klamath Weed Beetle	Widely distributed
Yellow Starthistle	Seed Head Weevil	Widely distributed
	Gall Fly	2 Sites
	Flower Weevil	1 Site
	Hairy Weevil	Becoming generally distributed
	Peacock Fly	Generally distributed
Red Gum Lerp Psyllid	Wasp (<i>Psyllaephagus bliteus</i>)	1 Site, well established
Puncture Vine	Stem Boring Weevil	Generally distributed

PEST ERADICATION

The following pests were under active control and eradication during the year: Dalmatian Toadflax, Scotch Thistle, Plumeless Thistle, Artichoke Thistle, Purple Starthistle, Oblong Spurge, Canada Thistle, Hydrilla*. *Hydrilla is a CDFA program supported by the Lake County Agriculture Department.

PEST EXCLUSION

Pest exclusion inspections are conducted daily at Post Offices and the U.P.S. terminal

PACKAGES PROFILED	PACKAGES INSPECTED	PACKAGES REJECTED
2579	590	0

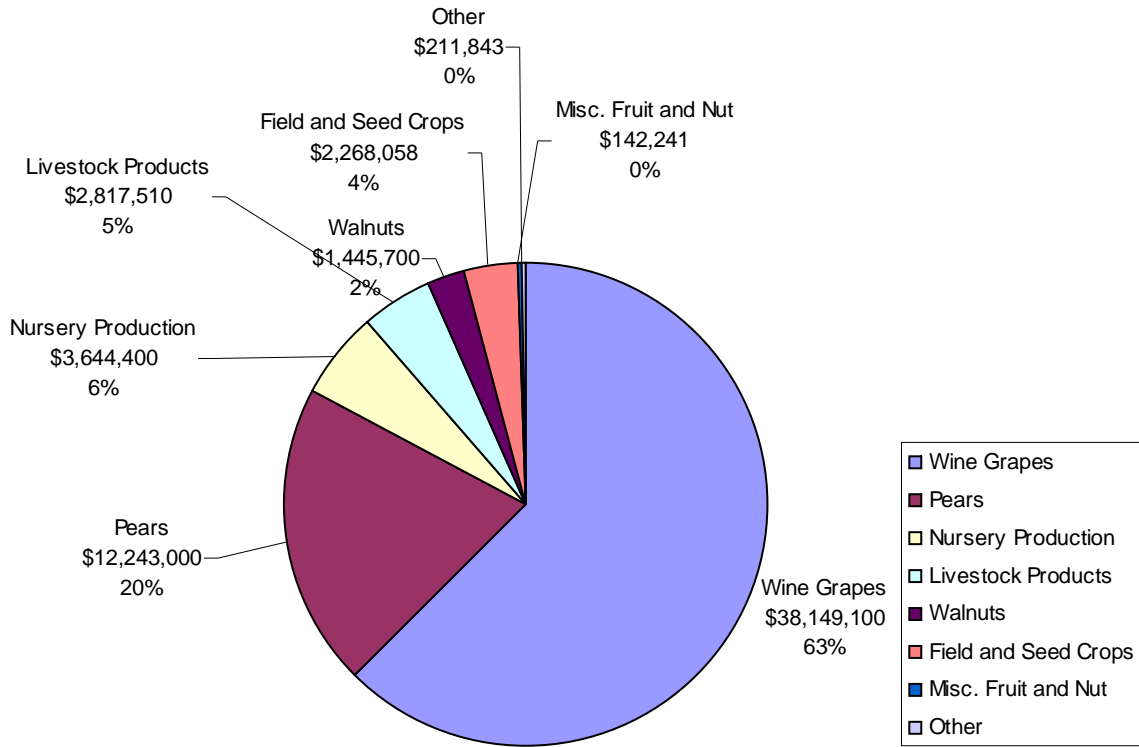
ORGANIC¹ FARMING STATISTICS

CROPS	NUMBER OF FARMS	ACRES
Walnuts	74	1748
Wine Grapes	10	221
Misc. Fruit	8	173
Misc. Vegetables	7	34
Nursery	2	3
Apples	3	5
Pears	7	64
TOTAL	111	2248

¹Registered organic with the Lake County Agricultural Commissioner



2005 AGRICULTURAL PRODUCTION BY COMMODITY



COMMODITY CLASS	YEAR	VALUE
FRUITS AND NUTS	2005	\$52,601,000
	2004	\$52,416,000
LIVESTOCK PRODUCTION	2005	\$2,665,000
	2004	\$2,891,000
LIVESTOCK & POULTRY PRODUCTS	2005	\$152,510
	2004	\$146,700
NURSERY PRODUCTION	2005	\$3,644,400
	2004	\$4,124,100
VEGETABLE CROPS	2005	\$182,323
	2004	\$200,000
FIELD CROPS	2005	\$2,268,058
	2004	\$1,676,000
FOREST PRODUCTS	2005	\$29,520
	2004	\$62,530
GRAND TOTAL	2005	\$61,542,811
	2004	\$61,516,000

LAKE COUNTY BOARD OF SUPERVISORS

Ed Robey, District 1
Jeff Smith, District 2
Gary Lewis, District 3
Anthony Farrington, District 4
Rob Brown, District 5

AGRICULTURAL COMMISSIONER
SEALER OF WEIGHTS & MEASURES

Steve Hajik

DEPUTY AGRICULTURAL COMMISSIONER
DEPUTY SEALER OF WEIGHTS & MEASURES

Chuck Morse

AGRICULTURAL BIOLOGISTS

Andrew Tritchler
Kristine Eutenier
Dana Thibeau
Denise Patrick

AGRICULTURAL AIDES

Marcy Harrison, Secretary
Tonja Dailey, Office Assistant

Lynn Eutenier
Kristi Bloomquist

FEDERAL WILDLIFE SERVICES STAFF

Scott Young
Greg Wamsley

COLOR PHOTOGRAPHY BY Kris Eutenier

Left to Right

Kristine Eutenier, Biologist III, Wts. & Meas. III
Chuck Morse, Deputy Commissioner
Andrew Tritchler, Biologist III, Wts. & Meas. III
Steve Hajik, County Commissioner
Dana Thibeau, Biologist III, Wts. & Meas. III
Denise Patrick, Biologist III, Wts. & Meas. III

