

2002 Agricultural Crop Report



Kings County, California

Honey

The oldest sweetener known to man has been manufactured in one of the world's most efficient factories, the beehive, for approximately 150 million years. Honeybees gather nectar from blossoms and make it into honey to be stored as food in "combs" in the hive for consumption during times of the year when nectar is not available. The main components of honey are fructose, glucose, and water, as well as traces of enzymes, minerals, vitamins, and amino acids. Bees may fly as many as 55,000 miles and visit more than 2 million flowers to gather enough nectar to make a pound of honey. Today honey is used universally as a sweetener in baking, baby foods, confectioneries, cosmetics, pharmaceuticals, syrups, and for curing tobacco.

Dating back to 7,000 B.C., man began harvesting honey from wild hives. The art of "beekeeping", or apiculture originated in southern Asia around 4,000 B.C. In 1638 colonists from Holland introduced the first domesticated European Honeybees to North America. The American Indians called these honeybees, "white man's flies".

Long before honey was introduced to the Americas it was cultivated and revered by several ancient societies. 3,500-year-old Egyptian scrolls show that honey was thought of as therapeutic and the scenes on the scrolls depict these ancient people offering overflowing combs of honey to the gods to show devotion and worship. Remnants of honey pots have also been discovered in the tombs of pharaohs to accompany them into their next life. To the classical Greeks honey was the nectar of the gods and according to Greek mythology Zeus was raised on a diet of honey. The philosophers Aristotle and Hippocrates, of ancient Greece, recommended honey as medicinal therapy and stated that honey consumption contributed to a long life. Such an endorsement from these great philosophers leaves no room of speculation as to how beekeeping became a major rural industry of the Roman Empire, and often a vocation practiced by the monastery monks.

An ancient use of honey was in the making of mead. Mead is an alcoholic drink made from the fermentation of honey and is thought to be the oldest intoxicating beverage produced by man. Interestingly enough in ancient Babylon for a month following a wedding the bride's father provided the new son-in-law with as much mead as he could drink. The Babylonians had a lunar calendar and this "moon" or month after the wedding was called the "honey month" known today as the "honeymoon".

In addition to honey, one of the most common products of the hive with numerous uses is beeswax. Beeswax is included in the production of candles, cosmetics (the largest use industry), electronics, lubricants, leather and fabric preservatives, polishes, inks and paints, models for dentistry and beer. A lesser known, but tremendously useful, is the utilization of bee venom for therapy. Many people today intentionally use bee venom as an effective deterrent to arthritis, multiple sclerosis, cancer, lupus, chronic fatigue syndrome and many other ailments. Other products of the beehive include pollen, brood, propolis (bee glue), and royal jelly.

Of all the by-products that bees produce their most significant contribution to man is their astonishing pollination ability. Without honeybees, the diet of humans would almost be entirely restricted to cereals, some nuts, and meats. Over 90 fruit, vegetable, nut and seed crops are partially or entirely dependent upon bees for pollination. A colony of bees have the ability to pollinate 2.5 to 500 million flowers and produce over 200 pounds of honey. Bees truly are the pollinating workhorses of agriculture.

The value of bee-pollinated crops in the United States is estimated to be 100 million times the value of the honey produced. California is the number one honey producing state in the nation. Kings County produces approximately 7% of California's honey. Honey production in Kings County outpaces several states including Colorado and Washington.

Photos and Inserts provided by the National Honey Board (www.honey.com)



COUNTY OF KINGS DEPARTMENT OF THE
AGRICULTURAL COMMISSIONER

SEALER OF WEIGHTS AND MEASURES
680 N. Campus Dr., Suite B • Hanford, CA 93230
(559) 582-3211, ext. 2830
e-mail: agstaff@co.kings.ca.us

Dennis F. Bray
Agricultural Commissioner
Sealer of Weights and Measures

Secretary William J. Lyons, Jr.
California Department of Food and Agriculture
And
The Honorable Board of Supervisors
County of Kings, California

April 15, 2003

It is my pleasure to submit the 2002 Kings County Crop Report. This annual publication presents statistical information on the acreage, yield and gross value of Kings County agricultural products in accordance with Sections 2272 and 2279 of the California Food and Agricultural Code.

Kings County agriculture has reached a huge milestone in the year 2002 by topping the one billion dollar gross production value for the first time ever. The total gross value of the County's number one industry was \$1,023,305,000. This represents an increase of (7.5%) from the 2001 gross production value (\$951,950,000).

Increase in acreages, favorable market values and weather conditions increased the Field Crop value by \$18,439,000 (6.0%), Fruit and Nut Crops by \$56,061,000 (62.6%), Seed Crops by \$228,000 (4.2%), Vegetable Crops by \$66,175,000 (103.9%) and Apiary Products by \$527,000 (26.3%).

However, unfavorable market prices led to a decrease in values for two of the 2002 crop categories. Livestock and Poultry decreased \$11,168,000 (-9.7%), and Livestock and Poultry Products \$58,907,000 (-16.0%).

Milk remains this county's leading commodity with a value of \$303,507,000 in 2002. This represents an increase of production of Market Milk by 7% but a decrease in value of (-19.2%).

I want to emphasize that the numbers in this report are gross values only and in no way reflect the net income or loss to producers.

My thanks to Buzz Felleke, Agricultural and Standards Inspector III, and Ruben J. Arroyo, Deputy Commissioner/Sealer in addition to other department staff who helped with the compilation and preparation of this report. Most of all, I wish to express my appreciation for the cooperation of all agricultural producers, contributing organizations, and those individuals who provided the necessary information for this report.

Respectfully Submitted,

A handwritten signature in black ink, appearing to read "D. Bray", is written over a horizontal line.

Dennis F. Bray
Agricultural Commissioner
Sealer of Weights and Measures

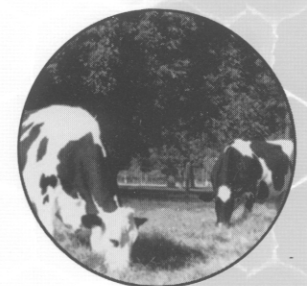
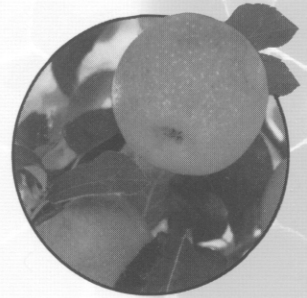
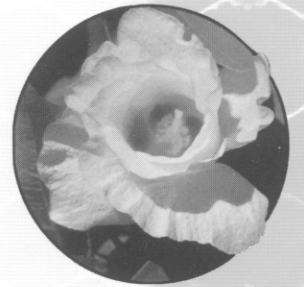
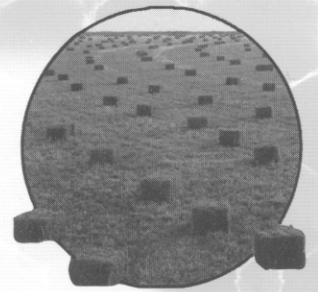


BEZABIH "BUZZ" FELLEKE

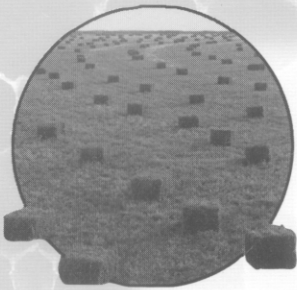
This 2002 Crop Report is dedicated to our retiring Agriculture and Standards Inspector III, Bezabih Felleke. "Buzz", as we all call him, began his career with the Kings County Agricultural Commissioner-Sealer Department June 29, 1981. He was first assigned the duties of Pest Detection trapper and Phytosanitary Field Inspection Certification. It wasn't long before Buzz demonstrated a valuable aptitude towards working with statistical data. He was self-taught with the use of computers and spreadsheets. Buzz has played a significant role with the computerization of Crop Reports. His photography skills were used as a resource for Crop Report Covers, as he is credited with those used in 1988, 1995 (his personal favorite), and 2001. Arguably, Buzz has the longest run, 20 years, of crop reporting work in the San Joaquin Valley. Buzz will be missed for his compassion, convictions, gentle demeanor, and competitive spirit, especially in the sport of racquetball. All of us have shared the joy of Buzz' good-natured ribbing regarding an upcoming racquetball game and its outcome. Buzz' devotion to his family and friends, his faith, and to the community is commendable and sets a standard for us all. We wish Buzz all the best in his new path and we offer him a heart-felt thank you for his many dedicated years of service to this department and the County of Kings.

Table of Contents

Summary Letter	1
County Administration/Ag Commissioner-Sealer Personnel . . .	4
Field Crops	5
Seed Crops	6
Fruit and Nut Crops	7
Vegetable Crops	9
Inventories of Livestock and Poultry	10
Livestock and Poultry	10
Livestock and Poultry Products	11
Apiary Products	12
Five Year Comparision of Acreage and Crop Values	13
Kings County's Ten Leading Commodities	14
Sustainable Agricultural Report	15
Export Commodities	17
Agricultural Quick Facts	18
Land Use	19
Kings County General Information	20
Kings County Rainfall	21



Visit our Website @<http://www.countyofkings.com>



Kings County Board of Supervisors

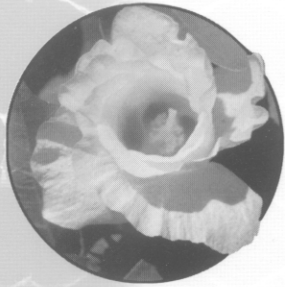
Joe A. Neves District I

Jon N. Rachford . . District II

Tony T. Oliveira . . District III

Tony Barba District IV

Alene L. Taylor . . . District V

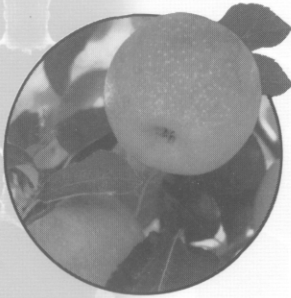


County Administrative Officer

Larry Spikes

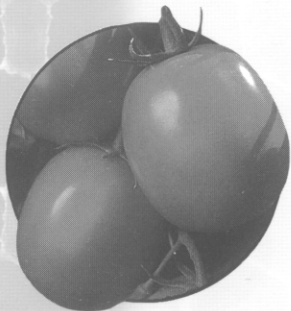
Agricultural Commissioner/Sealer of Weights and Measures

Dennis F. Bray



Assistant Agricultural Commissioner/Sealer

Tim Niswander



Deputy Agricultural Commissioner/Sealers

Ruben J. Arroyo

Steve Schweizer

Les Wright

Agricultural and Standards Inspectors

Joe Avila

Vince Evans

Michael Leoni

Bernard Costa

Buzz Felleke

Stevie McNeill

Bill DeRaad

Mario Gutierrez

Alfredo Prieto

Jim Dodd

Monty Hopper

Robert Torrez

Ron Evans

Rusty Lantsberger

Joan Vernon



Agricultural Computer Systems Coordinator

Lynda Schrupf

Agricultural and Standards Aides

Timmie Bressler

Tom Chambers



Clerical

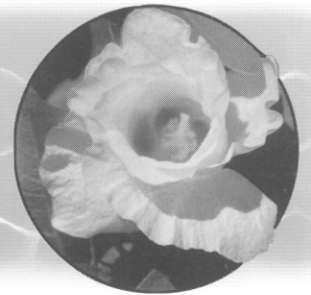
Janet Eckles

Diane O' Daniel

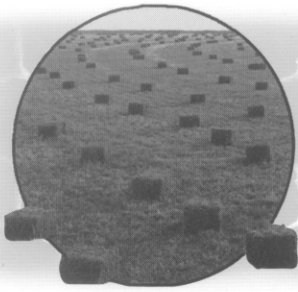
Lynda Gabbard

Linda Lavars

Field Crops



Crop Name	Harvested Production				Unit	Value	
	Year	Acreage	Per Acre	Total		Per Unit	Total
Barley	2002	611	1.90	1,161	ton	\$98.00	\$114,000
	2001	2,777	1.83	5,082	ton	\$103.46	\$526,000
Beans Dry a/	2002	6,501	0.93	6,046	ton	\$400.00	\$2,418,000
	2001	9,302	0.69	6,418	ton	\$503.52	\$3,232,000
Corn Silage	2002	47,487	23.04	1,094,100	ton	\$21.67	\$23,709,000
	2001	45,280	20.15	912,392	ton	\$19.51	\$17,801,000
Cotton							
Acala-Lint b/	2002	84,513	3.00	253,539	495 lbs.	\$344.43	\$87,326,000
	2001	75,582	2.79	210,874	495 lbs.	\$338.71	\$71,425,000
Acala- Seed	2002			104,594	ton	\$170.00	\$17,781,000
	2001			87,100	ton	\$165.00	\$14,372,000
Upland Non-App	2002	13,497	2.93	39,546	495 lbs.	\$336.60	\$13,311,000
	2001	47,173	2.54	119,819	495 lbs.	\$321.50	\$38,522,000
Upland Non-App Seed	2002			16,298	ton	\$170.00	\$2,771,000
	2001			49,440	ton	\$165.00	\$8,158,000
Pima- Lint	2002	66,069	2.52	166,494	495 lbs.	\$430.65	\$71,701,000
	2001	64,689	2.28	147,491	495 lbs.	\$425.34	\$62,734,000
Pima- Seed	2002			68,674	ton	\$134.00	\$9,202,000
	2001			60,946	ton	\$129.00	\$7,862,000
Pima Non-App	2002	2,691	2.50	6,728	495 lbs.	\$429.43	\$2,889,000
	2001	2,416	2.30	5,557	495 lbs.	\$420.75	\$2,338,000
Pima Non-App Seed	2002			2,775	ton	\$134.00	\$372,000
	2001			2,293	ton	\$129.00	\$296,000
Hay							
Alfalfa	2002	73,564	6.33	465,660	ton	\$107.77	\$50,186,000
	2001	58,177	5.41	314,738	ton	\$124.00	\$39,028,000
Others c/	2002	2,812	3.67	10,317	ton	\$86.85	\$896,000
	2001	4,987	2.51	12,517	ton	\$104.27	\$1,305,000
Pasture							
Irrigated	2002	11,000				135.00	\$1,485,000
	2001	11,000				114.00	\$1,254,000
Range	2002	189,237				5.00	\$946,000
	2001	102,000				2.20	\$224,000



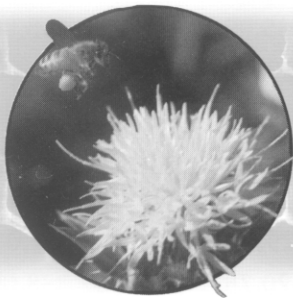
Field Crops

Crop	Year	Harvested Production		Total	Unit	Value	
		Acreage	Per Acre			Per Unit	Total
Alfalfa Stubble	2002	36,782				16.50	\$607,000
	2001	29,089				16.00	\$465,000
Sugar Beets	2002	2,725	31.27	85,211	ton	34.38	\$2,930,000
	2001	1,962	27.20	53,366	ton	32.25	\$1,721,000
Wheat Grain	2002	85,622	2.76	236,317	ton	122.88	\$29,039,000
	2001	98,562	2.75	271,046	ton	118.60	\$32,146,000
Misc. Field Crops	2002	64,783					\$9,058,000
	2001	41,383					\$4,893,000
TOTAL	2002	687,894					\$326,741,000
	2001	594,379					\$308,302,000

a/ All dry beans

b/ 495 lbs. = 1 bale

c/ includes hay and green chop from barley, oats and wheat



Seed Crops

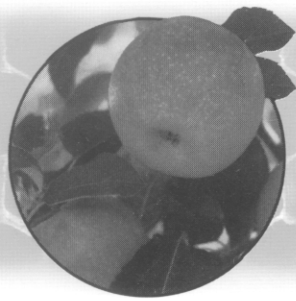
Crop	Year	Harvested Production		Total	Unit	Value	
		Acreage	Per Acre			Per Unit	Total
Cotton Cert.	2002	3,691		9,078	ton	\$359.07	\$3,260,000
	2001	1,026		1,068	ton	\$121.24	\$129,000
Others a/	2002	2,881					\$2,357,282
	2001	4,816					\$5,260,000
TOTAL	2002	6,572					\$5,617,000
	2001	5,842					\$5,389,000

a/ Alfalfa Certified, Asparagus, Barley Certified, Garbanzo Certified, Garbanzo Non-Certified, Lettuce
Onion Certified, Onion Non-Certified, Wheat Certified and Wheat Non-Certified.

Fruit & Nut Crops



Crop	Harvested Production			Value			
	Year	Acreage	Per Acre	Total	Unit	Per Unit	Total
Almonds	2002	7,676	0.83	6,344	ton	\$2,001.56	\$12,698,000
	2001	4,100	0.84	3,444	ton	\$2,131.76	\$7,342,000
Almond Hulls	2002			5,542	ton	\$79.00	\$438,000
	2001			2,960	ton	\$82.00	\$243,000
Apples							
Fresh	2002			2,191	ton	\$486.63	\$1,066,000
	2001			2,134	ton	\$333.03	\$711,000
Processed	2002			876	ton	\$20.00	\$18,000
	2001			854	ton	\$55.00	\$47,000
Apples Total	2002	255					\$1,084,000
	2001	366					\$758,000
Apricots Fresh	2002	304	5.22	1,587	ton	\$1,090.80	\$1,731,000
	2001	309	6.30	1,947	ton	\$830.04	\$1,616,000
Firewood	2002			1,520	cord	\$132.00	\$201,000
	2001			1,430	cord	\$100.00	\$143,000
Grapes							
Raisin Varieties	2002						
Fresh, Table				1,687	ton	\$959.00	\$1,618,000
Dried				1,416	ton	\$433.00	\$613,000
Crushed				2,308	ton	\$73.00	\$168,000
Canned				290	ton	\$223.10	\$65,000
Total		1,309					\$2,464,000
Grapes							
Raisin Varieties	2001						
Fresh, Table				1,894	ton	\$985.00	\$1,866,000
Dried				1,727	ton	\$525.00	\$907,000
Crushed				1,148	ton	\$85.26	\$98,000
Canned				96	ton	\$258.00	\$25,000
Total		2,711					\$2,896,000

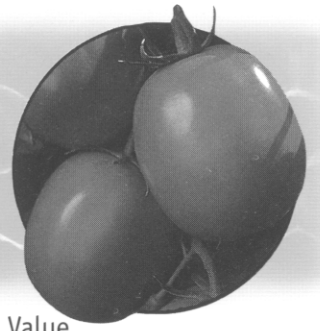


Fruit & Nut Crops

Crop	Year	Harvested Acreage	Production Per Unit	Total	Unit	Value Per Unit	Total
Grapes							
Table Varieties							
Crushed	2002	377	9.60	3,619	ton	\$80.89	\$293,000
	2001	412	8.90	3,667	ton	\$91.11	\$334,000
Fresh	2002	408	8.34	3,403	ton	\$906.95	\$3,086,000
	2001	267	5.38	1,436	ton	\$889.41	\$1,277,000
Wine Varieties							
Total	2002	2,622	8.42	22,077	ton	\$183.82	\$4,058,000
	2001	2,342	10.75	25,177	ton	\$183.95	\$4,631,000
Grapes Total	2002	4,716					\$9,901,000
	2001	5,732					\$9,138,000
Nectarines	2002	2,209	8.13	17,959	ton	\$680.20	\$12,216,000
	2001	1,808	6.30	11,390	ton	\$584.43	\$6,657,000
Peaches							
Clingstone	2002	1,181	12.85	15,176	ton	\$238.07	\$3,613,000
	2001	1,044	18.92	19,752	ton	\$235.06	\$4,643,000
Freestone	2002	2,569	11.46	29,441	ton	\$789.21	\$23,235,000
	2001	2,513	7.95	19,978	ton	\$552.81	\$11,044,000
Peaches Total	2002	3,750					\$26,848,000
	2001	3,557					\$15,687,000
Pistachios	2002	8,600	1.86	15,996	ton	\$2,015.29	\$32,237,000
	2001	6,987	1.23	8,594	ton	\$2,125.97	\$18,271,000
Plums	2002	1,749	8.41	14,709	ton	\$905.35	\$13,317,000
	2001	1,660	5.19	8,615	ton	\$615.46	\$5,302,000
Pomegranates	2002	2,307	3.00	6,921	ton	\$1,723.50	\$11,928,000
	2001	2,030	2.96	6,009	ton	\$1,357.13	\$8,155,000
Walnuts	2002	9,893	1.30	12,861	ton	\$1,109.72	\$14,272,000
	2001	7,241	1.52	11,006	ton	\$1,077.78	\$11,862,000
Others a/	2002	1,511					\$8,753,000
	2001	1,186					\$4,389,000
TOTAL	2002	42,970					\$145,624,000
	2001	34,976					\$89,563,000

a/ Includes asian pears, cherries, jojobas, kiwifruit, olives, oranges, pecans, persimmons, pluots, quince, and strawberries

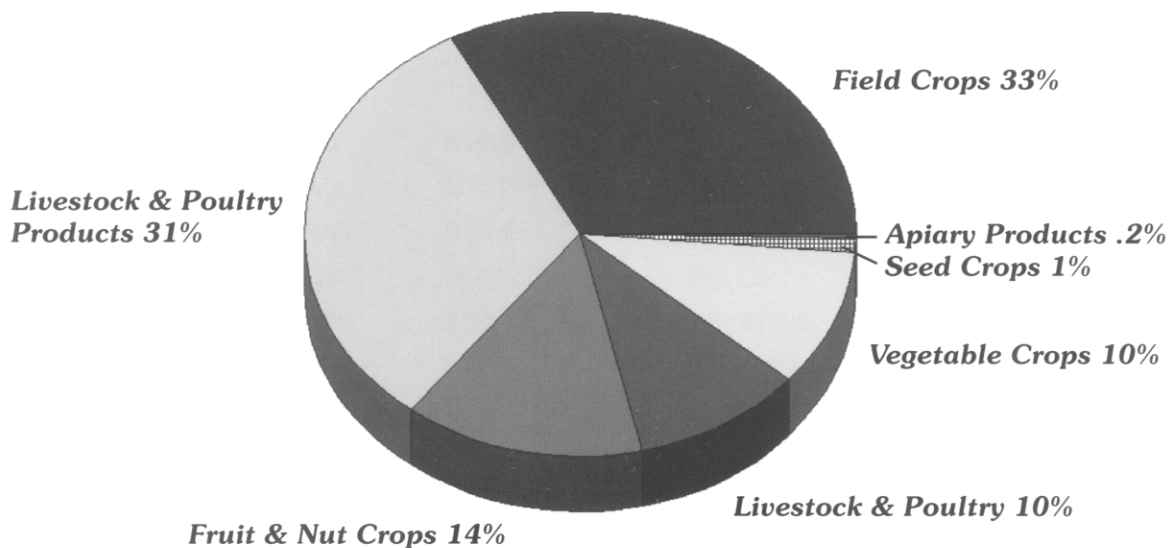
Vegetable Crops



Crop	Harvested	Production		Total	Unit	Value	
	Year	Acreage	Per Acre			Per Unit	Total
Cantaloupes	2002	370	18.79	6,952	ton	276.40	\$1,922,000
	2001	590	16.23	9,576	ton	225.00	\$2,155,000
Tomatoes							
Fresh	2002	784	31.31	24,547	ton	124.39	\$3,053,000
	2001	972	24.85	24,154	ton	180.22	\$4,353,000
Processed	2002	16,108	32.33	520,772	ton	49.91	\$25,992,000
	2001	10,000	29.81	298,100	ton	51.18	\$15,257,000
Tomatoes Total	2002	16,892					\$29,045,000
	2001	10,972					\$19,610,000
Other a/	2002	7,067					\$98,874,000
	2001	8,373					\$41,901,000
TOTAL	2002	24,329					\$129,841,000
	2001	19,935					\$63,666,000

a/ asparagus, broccoli, carrots, cauliflower, fresh garlic, misc. melons, peppers, processed garlic, processed onions, romaine lettuce, snap beans squash, sweet corn, watermelons, and Farmer's Market crops

2002 Percent of Total Value



"Behold the Farmer who waits for the precious produce of the soil," -James 5:7



Inventories of Livestock & Poultry

Item	January 1, 2002 Number of Head	January 1, 2001 Number of Head
Cattle and Calves		
All	210,000	200,000
Dairy Cows 2 Years and Over	140,000	139,000
Cattle and Calves on Feed	3,000	4,000
Other	136,000	140,000
Sheep and Lambs		
Sheep and Lambs	10,713	13,190
Goats	2,000	2,400
Hogs and Pigs	3,500	3,200
Turkeys	554,102	496,051



Livestock & Poultry

Item	Year	Production		Unit	Value	
		Number Of Head	Total Liveweight		Per Unit	Total
Breeding Stock a/	2002					\$1,430,000
	2001					\$1,680,000
Cattle and Calves	2002	158,832	966,928	cwt.	\$68.82	\$66,544,000
	2001	155,992	949,267	cwt.	\$70.53	\$66,952,000
Sheep and Lambs	2002	10,713	12,430	cwt.	\$75.32	\$936,000
	2001	13,190	17,339	cwt.	\$68.33	\$1,185,000
Turkeys	2002	2,216,409	47,697,122	lb.	\$0.70	\$33,388,000
	2001	1,984,202	45,636,646	lb.	\$0.81	\$36,966,000
Others b/	2002					\$1,903,000
	2001					\$8,586,000
TOTAL	2002					\$104,201,000
	2001					\$115,369,000

a/ For all animals except horses

b/ Includes catfish, chickens, goats, hogs and pigs

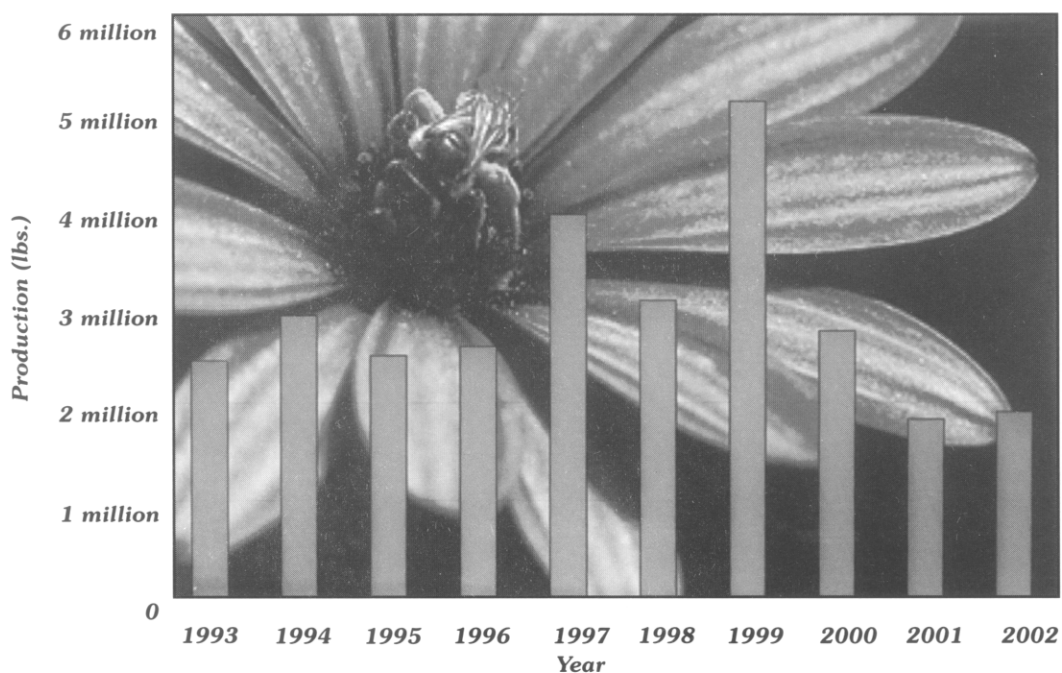
Livestock & Poultry Products

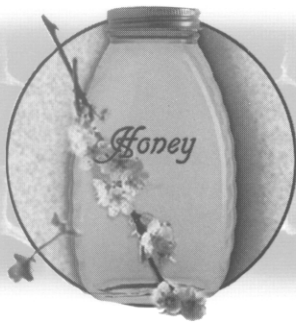


Item	Year	Total Production	Unit	Per Unit	Total
Eggs- Chicken Market	2002	3,191,760	doz.	\$0.68	\$2,170,000
	2001	3,283,400	doz.	\$0.85	\$2,791,000
Manure	2002	502,321	ton	\$7.00	\$3,516,000
	2001	495,776	ton	\$6.00	\$2,975,000
Milk Market	2002	28,195,342	cwt.	\$10.73	\$302,536,000
	2001	26,333,202	cwt.	\$13.68	\$360,238,000
Milk Mfg.	2002	49,665	cwt.	\$10.18	\$506,000
	2001	80,061	cwt.	\$12.96	\$1,038,000
Milk- Goats	2002	14,706	cwt.	\$31.62	\$465,000
	2001	17,617	cwt.	\$31.93	\$563,000
Milk Total	2002				\$303,507,000
	2001				\$361,839,000
Wool*	2002	91,061	lb.	\$0.65	\$59,000
	2001	137,176	lb.	\$0.38	\$52,000
TOTAL	2002				\$309,252,000
	2001				\$367,657,000

* Price does not include wool incentive.

10 Years of Kings County Honey Production





Apiary Products

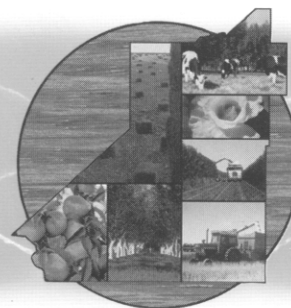
Item	Year	Total Production	Unit	Per Unit	Total
Honey	2002	1,225,928	lb.	\$1.20	\$1,471,000
	2001	1,823,802	lb.	\$0.63	\$1,149,000
Beeswax	2002	20,432	lb.	\$1.05	\$21,000
	2001	30,397	lb.	\$1.10	\$33,000
Seed Alfalfa	2002	1,992	colonies	\$30.00	\$60,000
	2001	9,254	colonies	\$27.00	\$250,000
Tree Fruit a/	2002	21,050	colonies	\$45.33	\$954,000
	2001	13,429	colonies	\$41.02	\$551,000
Cantaloupe	2002	1,230	colonies	\$16.00	\$20,000
	2001	885	colonies	\$16.00	\$14,000
Vegetable Seed	2002	234	colonies	\$20.00	\$5,000
	2001	303	colonies	\$22.00	\$7,000
TOTAL	2002				\$2,465,000
	2001				\$2,004,000

a/ almonds, apples, cherries, kiwifruit, and plums

10 Years of Kings County Honey Prices

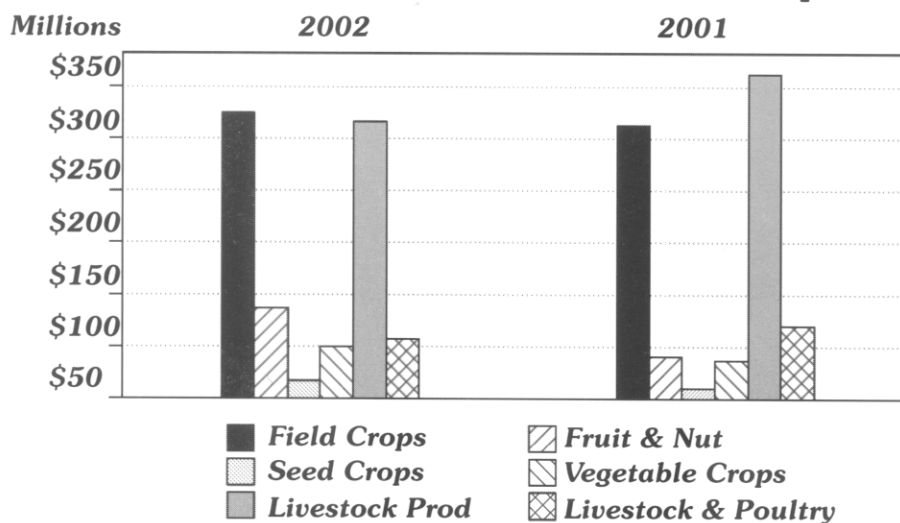


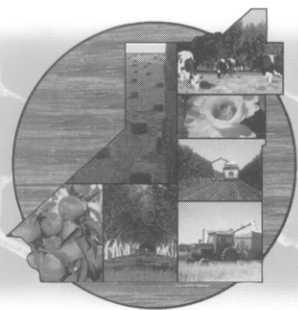
Five Year Comparison Of Acreage & Crop Values



	2002	2001	2000	1999	1998
Apiary Products	2,531,000	2,004,000	2,647,000	4,859,000	3,676,000
Field Crops	326,741,000	308,302,000	336,361,000	310,535,000	223,872,000
Acreage	687,894	594,379	641,117	609,360	533,296
Fruit and Nut Crops	145,624,000	89,563,000	80,223,000	85,412,000	91,651,000
Acreage	42,970	34,976	30,634	29,758	29,017
Livestock and Poultry	104,201,000	115,369,000	106,229,000	114,247,000	112,287,000
Livestock and Poultry Products	308,750,000	367,657,000	298,609,000	3322,759,000	328,725,000
Seed Crops	5,617,000	5,389,000	18,412,000	30,115,000	18,511,000
Acreage	6,572	5,842	24,608	28,001	30,498
Vegetable Crops	129,841,000	63,666,000	43,998,000	33,688,000	37,591,000
Acreage	24,296	19,935	15,376	11,125	14,268
TOTAL	\$1,023,305,000	\$915,950,000	\$886,479,000	\$901,614,000	\$816,310,000

2002 and 2001 Production Value Comparisons

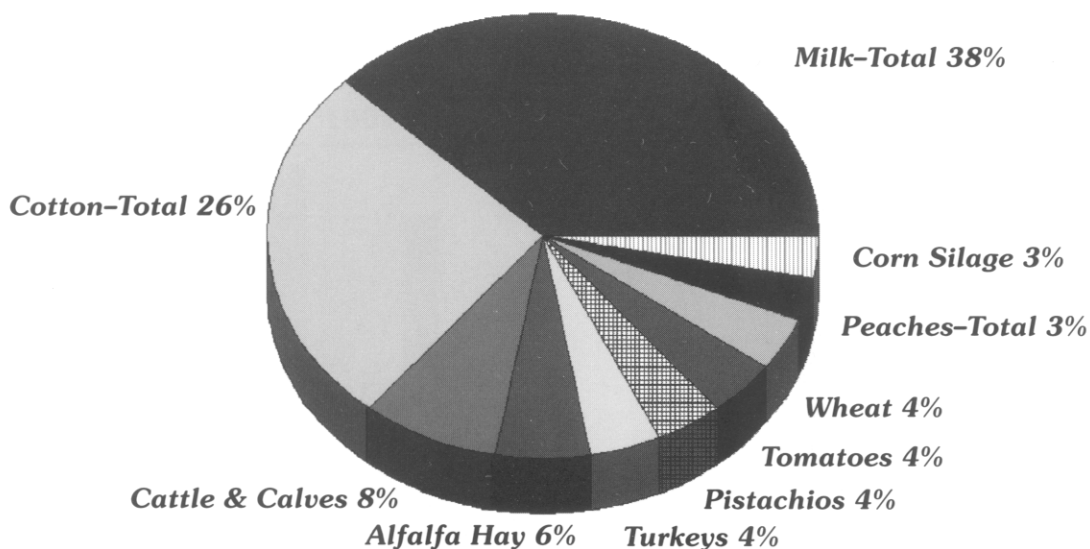




Kings County's Ten Leading Commodities

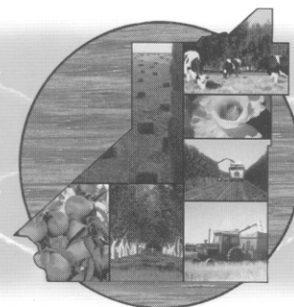
Crop	Rank	2002 Dollar Value	2001 Rank	2000 Rank
Milk, Total	1	\$303,507,000	1	1
Cotton, Total	2	\$205,353,000	2	2
Cattle and Calves	3	\$66,544,000	3	3
Alfalfa, Hay	4	\$50,186,000	4	4
Turkeys	5	\$33,388,000	5	5
Pistachios	6	\$32,237,000	8	11
Tomatoes, Total	7	\$29,045,000	7	7
Wheat	8	\$29,039,000	6	6
Peaches, Total	9	\$26,848,000	10	8
Corn Silage	10	\$23,709,000	9	9

Top Ten Commodities of Kings County for 2002



We come and go but the land is always here and the people who really love and understand it are the people who really own it—for a little while. —Willa Cather, 1873-1947

Kings County Sustainable Agricultural Report

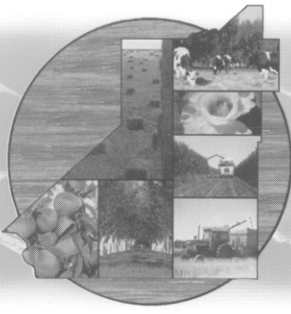


County Biological Control

Pest	Agent/Mechanism	Scope of Program
Puncture Vine <u>Tribulus terrestris</u>	Stem Mining Weevil <u>Microlarinus lyoriformis</u> Seed Head Weevil <u>Microlarinus lareynil</u>	Generally Distributed Generally Distributed
Yellow Starthistle <u>Centaurea solstitialis</u>	Seed Head Weevil <u>Bangasternus orientalis</u> Gall Fly <u>Urophora sirunaseva</u> Hairy Weevil <u>Eustenopus villosus</u>	2 Sites 1 Site 3 Sites
Ash Whitefly <u>Siphoninus phillyreae</u>	Parasitic Wasp <u>Encarsia parenorea</u>	Generally Distributed
Red Gum Lerp Psyllid <u>Glycaspis brimblecombei</u>	Parasitic Wasp <u>Psyllaephagus bliteus</u>	1 Site
Silverleaf Whitefly <u>Bemisia argentifolii</u>	Parasitic Wasp <u>Eretmocerus sp. (M95104)</u> <u>Eretmocerus sp. (M95012)</u> <u>Eretmocerus mundus</u>	6 Sites 6 Sites 6 Sites

County Pest Exclusion

Pest	Agent/Mechanism	Scope of Program
European Corn Borer <u>Ostrinia nubilalis</u>	Railroad Corn Shipment	1,408
Gypsy Moth <u>Lymantria dispar</u>	Household Goods Shipments	303
Various Pests	Truck Shipments	22,643
Crops	Activity	
Export Commodities	Origin Certification	1,263 Issued
Export Seed	Field Inspections	123 Sites/5,246 Acres



Kings County Sustainable Agricultural Report

County Pest Eradication

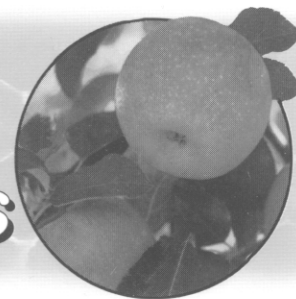
Pest	Agent/Mechanism	Scope of Program
Pink Bollworm <u>Pectinophora gossypiella</u>	Mechanical/Host Free Period	166,820 Acres
Alligator Weed <u>Alternanthera philoxeroides</u>	Visual Inspection Mechanical/Chemical	15 Sites Treated

County Pest Eradication

Pest	Number of Traps	Types of Traps
Mediterranean Fruit Fly	260	Jackson Traps
Mexican Fruit Fly	151	McPhail Traps
Oriental Fruit Fly	60	Jackson Traps
Melon Fly	60	Jackson Traps
Gypsy Moth	83	Delta Traps
Japanese Beetle	80	Japanese Beetle Traps
European Corn Borer	15	Perecon 1c Traps
European Pine Shoot Moth	6	Perecon II Traps
Khapra Beetle	250	Trogo Traps
Western Cherry Fruit Fly	12	Adult Monitoring Traps
Apple Maggot	74	Adult Monitoring Traps
Olive Fruit Fly	36	Adult Monitoring Traps
Glassy-Winged Sharpshooter	354	Adult Monitoring Traps
Total	1441	



Export Commodities



Commodities Exported From Kings County

Alfalfa Seed	Cotton Lint	Onions
Almonds	Cotton Seed	Peaches
Apples	Garlic	Pistachios
Apricots	Garlic Seed	Plums
Asparagus Seeds	Kiwifruit	Pomegranates
Calcium Salts	Nectarines	Tomato Powder
Cherries		Wheat Seed

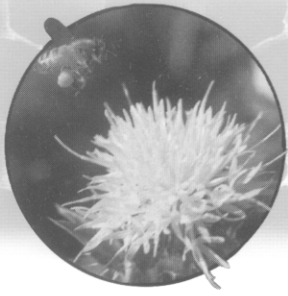


Export Trade Partners of Kings County in 2002

Algeria	France	New Caedonia
Argentina	Germany	Panama
Australia	Greece	Peru
Austria	Hong Kong	Philippines
Belgium	India	Russian Federation
Canada	Italy	Saudi Arabia
Chile	Japan	Singapore
China	Korea	Spain
Colombia	Kuwait	Switzerland
Costa Rica	Luxembourg	Taiwan
Ecuador	Malaysia	United Kingdom
Egypt	Mexico	Venezuela
El Salvador	Nepal	Vietnam
	New Zealand	
	Netherlands	



There are two spiritual dangers in not owning a farm. One is the danger of supposing breakfast comes from the grocery. The other is in supposing that heat comes from the furnace. –Aldo Leopold



Agricultural Quick Facts

- 84% of the land area in Kings County is farmland.
- 78% of Kings County farmland is protected under the Williamson Act contract.
- A U.S. farmer supplies enough food, fiber, and flowers for 129 people, 97 in the U.S. and 32 in foreign countries.
- If California were a country, it would be the 6th leading agricultural exporter in the world, outpacing China, Canada, Brazil, and Australia.
- It is estimated that U.S. agricultural land provides habitat for 75% of the nation's wildlife.
- The most prolific milk producing cow the world has ever known, No. 289, lived in Kings County for 19 years and gave 54,070 gallons of milk – enough to fill more than eight 60-foot tanker trucks.

Certified Farmer's Market

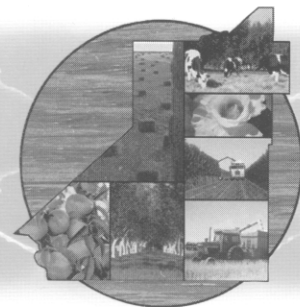
Thursday Night Market Place
109 W. 7th Street
Hanford, CA 93230
Thursday 5:30 p.m. to 8:30 p.m.
May through October – Irwin Street

Almonds
Apples
Apricots
Asian Pears
Bell Peppers
Blackberries
Broccoli
Beans
Cabbage
Cactus
Cantaloupes
Cherries
Cherry Tomatoes
Cheese
Chili Peppers
Cucumbers
Eggplant
Eggs

Figs
Fresh Cut Flowers
Garlic
Grapes
Herbs
Honey
Kiwifruit
Mixed Melons
Nectarines
Okra
Olives
Onions
Oranges
Lettuce
Peaches
Peanuts
Pears

Pecans
Peppers
Persimmons
Pistachios
Plums
Pluots
Prunes
Pomegranates
Potatoes
Pumpkins
Quince
Radishes
Squash
Strawberries
Sweet Corn
Tomatoes
Walnuts
Watermelon

Land Use



Surrounding Counties	2001 Rank	2001 Gross Value*	Total County Area Acres	Top Commodity	2001 Value	Acres or Number of Head
Tulare	1	3,492,477	3,110,400	Milk	1,154,146	375,505
Fresno	2	3,215,185	4,080,000	Cotton	368,121	286,630
Monterey	3	2,746,244	2,127,359	Lettuce	360,562	57,594
Kern	4	2,254,306	5,166,720	Grapes	437,865	87,224
Kings	12	951,950	890,545	Milk	361,839	139,000

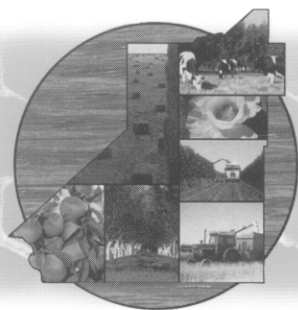
*Gross Value does not include timber.

Kings County Land Use Summary

Land Use Category	1998		2000		Acre Change
	Acres	Percent	Acres	Percent	
Prime Farmland	142,529	16	142,665	16	136
Farmland of Statewide Importance	429,172	48	433,245	48	4,073
Unique Farmland	24,494	3	24,740	3	246
Farmland of Local Importance	6,511	1	6,851	1	3340
Grazing Land	244,175	27	238,301	27	-5,874
Urban and Built-Up Land	28,244	3	28,939	3	695
Other Land	15,595	2	15,979	2	384
Water Area	66	0	66	0	0
Total Acres	890,786		890,786		

From the California Department of Conservation.

The face of California farming is not that of a huge corporation. By contrast, the heart of California agriculture is in the thousands of family owned and operated farms. The average size of a U.S. farm is 469 acres, compared to California's average of 357 acres. Presently, the farmers in this state are using slightly less water than they did 30 years ago, and they are producing 60 percent more crops. California farmers are true stewards of the land and its resources; on average more than 90 percent of their water is reused. These statistics may come as no surprise to many California farmers who are on the cutting edge of agricultural technology. California farmers are using better seeds, highly beneficial soil amendments, diversified pest control techniques, and greater irrigation technology. These advances have allowed all of California's farmers, from corporate to family owned, to compete in the world market.



Kings County General Information

County Seat	Hanford
County Population (2001)	136,107
Population per Square Mile	97.85
Total Assessed Value (2002)	4,848,648,191
Land Area (Square Miles)	1,391
Total Acres	890,545
Total Harvested Crop Acreage (2002)	761,004
Foreign Ownership (2001)	4,009 (acres)
Total Farmland (Acres-2001)	749,100
Public Ownership of Land (Acres-2000)	
Federal	27,313.76
State	4,015.99
County	1,421.61
Local Agencies	3,587.01

Agricultural production ranked 12th (based on 2001 figures) among California counties.

Railroads: Burlington Northern & Santa Fe Railroad and San Joaquin Valley Railroad.

Major Roads: Interstate 5, Highway 41, Highway 43, and Highway 198.

Water Sources: Kings River, Tule River, Kaweah River, Kern River, and California Aqueduct.

Elevation: The highest point is King Mountain at 3,473 feet above sea level, and the lowest point is the Tulare Lake Basin at 175 feet above sea level.

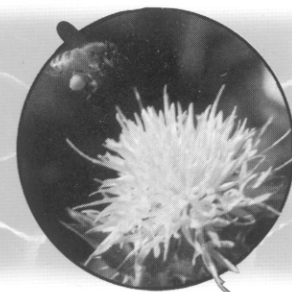
Average length of growing season: 257 days.

Average date of last spring frost: March 3.

Average climate: 196 sunny clear days, 74 partly cloudy days, and 95 cloudy days.

Average date of first fall frost: November 18.

Rainfall - Hanford, CA



YEAR	JUNE	JULY	AUG.	SEPT.	OCT.	NOV.	DEC.	JAN.	FEB.	MAR.	APR.	MAY	TOTAL
1953-54	0.08	0.00	0.00	0.00	0.02	1.01	0.09	1.89	0.78	2.21	0.52	0.34	6.94
1954-55	0.00	0.00	0.00	0.00	0.00	0.66	1.61	3.25	1.31	0.43	0.69	0.90	8.85
1955-56	0.00	0.00	0.00	0.00	0.02	0.92	4.67	1.10	0.38	0.10	0.73	0.77	8.69
1956-57	0.07	0.00	0.00	0.00	0.73	0.00	0.15	1.39	1.22	0.05	0.88	0.61	5.10
1957-58	0.00	0.00	0.00	0.00	0.20	1.19	1.41	1.85	2.30	3.93	2.38	0.24	13.50
1958-59	0.00	0.00	0.11	0.11	0.00	0.23	0.16	1.35	1.90	0.11	0.52	0.00	4.49
1959-60	0.00	0.00	0.00	0.11	0.00	0.00	0.17	0.80	1.71	0.61	0.57	0.00	3.97
1960-61	0.00	0.02	0.00	0.53	0.00	2.61	0.03	1.34	0.22	0.67	0.22	0.37	6.01
1961-62	0.00	0.00	0.00	0.00	0.00	1.11	1.28	0.71	4.88	1.06	0.00	0.11	9.15
1962-63	0.00	0.00	0.00	0.01	0.10	0.00	0.19	1.19	1.68	1.37	2.88	0.56	7.98
1963-64	0.17	0.00	0.00	0.33	0.75	1.23	0.31	0.61	0.02	0.94	0.64	0.20	5.20
1964-65	0.00	0.00	0.34	0.00	0.95	1.31	1.44	1.18	0.33	0.33	1.57	0.00	7.45
1965-66	0.00	0.00	0.05	0.07	0.05	2.15	1.97	0.63	0.71	0.10	0.00	0.07	5.80
1966-67	0.06	0.04	0.00	0.29	0.09	1.28	2.57	1.41	0.05	2.42	2.95	0.07	11.23
1967-68	0.23	0.00	0.00	0.31	0.00	1.99	0.50	0.62	0.64	1.00	0.50	0.08	5.87
1968-69	0.00	0.00	0.00	0.00	1.33	0.98	1.64	6.69	4.54	0.79	0.85	0.32	17.14
1969-70	0.21	0.07	0.00	0.15	0.05	0.51	0.70	1.60	1.33	1.42	0.14	0.00	6.18
1970-71	0.00	0.00	0.00	0.00	0.00	2.40	1.23	0.35	0.19	0.23	0.40	1.44	6.24
1971-72	0.00	0.00	0.00	0.04	0.06	0.41	1.87	0.04	0.35	0.00	0.23	0.00	3.00
1972-73	0.00	0.00	0.00	0.24	0.21	2.90	0.65	2.44	2.29	2.20	0.12	0.00	11.05
1973-74	0.00	0.00	0.00	0.00	0.76	0.46	0.94	2.97	0.13	1.75	0.03	0.00	7.04
1974-75	0.00	0.00	0.00	0.00	0.65	0.24	1.40	0.09	2.26	1.24	0.49	0.00	6.37
1975-76	0.00	0.00	0.00	0.98	0.76	0.05	0.22	0.00	2.94	0.19	1.47	0.03	6.64
1976-77	0.01	0.00	0.22	1.47	0.00	1.15	0.96	0.96	0.03	0.43	0.00	0.01	5.24
1977-78	0.07	0.00	0.00	0.00	0.05	0.06	2.85	2.22	5.05	4.12	1.71	0.00	16.13
1978-79	0.00	0.00	0.00	1.10	0.00	0.79	0.50	1.84	1.61	1.16	0.03	0.00	7.03
1979-80	0.00	0.04	0.00	0.08	0.41	0.62	0.41	2.90	2.71	1.28	0.05	0.04	8.54
1980-81	0.00	0.00	0.00	0.00	0.09	0.00	0.21	1.80	0.86	2.10	0.68	0.17	5.91
1981-82	0.00	0.00	0.00	0.00	0.76	1.08	0.29	0.84	0.33	3.52	1.75	0.00	8.57
1982-83	0.45	0.18	0.00	0.64	1.03	2.15	0.71	3.74	2.59	3.39	1.63	0.04	16.55
1983-84	0.00	0.00	0.05	0.82	0.43	1.66	1.22	0.01	0.42	0.27	0.18	0.00	5.06
1984-85	0.00	0.00	0.00	0.01	0.52	1.41	1.66	0.59	0.61	0.68	0.12	0.01	5.61
1985-86	0.00	0.05	0.00	0.00	0.54	2.11	0.56	1.46	2.60	3.40	0.45	0.00	11.17
1986-87	0.00	0.00	0.00	0.15	0.00	0.21	0.77	1.77	2.04	2.02	0.06	0.13	7.15
1987-88	0.05	0.00	0.00	0.00	0.86	0.72	1.74	1.37	0.40	0.93	2.65	0.07	8.79
1988-89	0.06	0.00	0.00	0.00	0.00	1.33	2.29	1.02	2.03	0.85	0.02	0.39	7.99
1989-90	0.00	0.00	0.00	0.67	0.32	0.20	0.53	1.79	1.02	0.30	0.97	0.87	6.67
1990-91	0.00	0.00	0.66	0.00	0.01	0.22	0.09	0.37	1.32	6.67	0.19	0.66	10.19
1991-92	0.36	0.00	0.00	0.11	0.38	0.14	1.32	1.40	3.32	0.85	0.10	0.00	7.98
1992-93	0.00	0.01	0.00	0.00	0.58	0.00	2.62	3.88	2.48	2.16	0.07	0.08	11.88
1993-94	0.26	0.00	0.00	0.24	0.24	0.68	0.66	1.45	1.02	0.70	0.69	0.00	5.94
1994-95	0.00	0.00	0.00	1.06	0.35	1.54	0.33	4.70	0.51	4.77	0.65	0.87	14.78
1995-96	0.00	0.00	0.00	0.00	0.00	0.00	1.59	1.79	2.55	2.15	0.89	0.16	9.13
1996-97	0.04	0.00	0.00	0.00	1.65	0.87	3.03	3.02	0.12	0.21	0.00	0.00	8.94
1997-98	0.00	0.00	0.00	0.06	0.09	1.96	1.80	2.00	4.05	2.60	1.68	1.31	15.55
1998-99	0.44	0.00	0.00	0.00	0.68	0.63	0.64	3.01	0.56	0.43	1.37	0.00	7.76
1999-2000	0.00	0.00	0.00	0.00	0.15	0.00	0.00	1.08	3.28	1.59	0.97	0.48	7.55
2000-2001	0.35	0.00	0.00	0.03	1.31	0.00	0.03	1.98	1.48	1.24	1.12	0.00	7.54
2001-2002	0.00	0.09	0.00	0.00	0.18	1.84	1.99	0.87	0.31	1.04	0.03	0.01	6.36
2002-2003	0.82	0.00	0.00	0.00	0.00	1.42	1.14						
AVERAGE	0.06	0.01	0.03	0.19	0.35	0.90	1.08	1.63	1.51	1.44	0.74	0.23	8.16
50 YEAR AVERAGE RAINFALL													8.16