

IMPERIAL COUNTY
Agricultural Crop
& Livestock Report 2010

Connie L. Valenzuela
Agricultural Commissioner
Sealer of Weights and Measures

Linda S. Evans
Assistant Agricultural Commissioner/
Asst. Sealer of Weights and Measures



852 Broadway
El Centro, CA 92243

(760) 482-4314
Fax: (760) 353-9420

E-mail: agcom@co.imperial.ca.us

May 24, 2011

TO: Karen Ross, Secretary
California Department of Food and Agriculture
And
The Honorable Board of Supervisors, County of Imperial
Supervisor Jesus "Jack" Terrazas, Chairman, District 2
Supervisor Michael W. Kelley, Vice-Chairman, District 3
Supervisor John R. Renison, District 1
Supervisor Gary Wyatt, District 4
Supervisor Raymond "Ray" Castillo, District 5

In accordance with the requirements of Section 2279 of the California Food and Agricultural Code, I am pleased to submit the 2010 Imperial County Agricultural Crop and Livestock Report. This report summarizes the estimated acreage, yield, and gross value of Imperial County's agricultural production for the year 2010. Also included is a report on sustainable agriculture pursuant to Section 2272 of the California Food and Agricultural Code.

Note that the values presented in the report represent the gross value for products and do not reflect the costs of production, marketing, or transportation. No attempt is made to reflect the net income, profit, or loss to producers.

The 2010 gross production was valued at \$1,598,534,000. This is an increase of \$145,564,000 (10%) compared to the 2009 figure (\$1,452,970,000), but is below the 2008 gross value of \$1,684,522,000. Field Crops showed an overall increase of 15% in value compared to 2009, with the largest gains in sugar beets, sudan-grass hay, cotton, and alfalfa hay. The overall gain in Vegetable and Melon Crops was more than 17% with the largest gains in market onions, spinach, melons, leaf lettuce, and "misc. vegetables" which includes smaller acreages of 35 different crops. Gains were generally due to increases in acreage and price. Cattle again ranked as our number one commodity, despite a drop in gross value of over \$19 million (6.8%).

I would like to express my sincere thanks to all of the growers, processors, industry groups, and agencies who provided the information and statistics for this report. In addition, I would like to express my appreciation to all the members of my staff for their hard work and dedication, and particularly to David Ritter, Special Projects, for his work in compiling this annual report.

Sincerely,

Connie L. Valenzuela
Agricultural Commissioner

IMPERIAL COUNTY 2010 Summary

COMMODITY	YEAR	HARVESTED ACREAGE	VALUE
VEGETABLE & MELON CROPS	2010	115,501	809,126,000
	2009	114,099	690,311,000
FIELD CROPS	2010	352,760	360,139,000
	2009	353,128	312,554,000
LIVESTOCK	2010		321,022,000
	2009		343,201,000
FRUIT & NUT CROPS	2010	7,104	51,294,000
	2009	6,745	47,765,000
SEED & NURSERY CROPS	2010	53,969	52,952,000
	2009	62,237	55,577,000
APIARY PRODUCTS	2010		4,001,000
	2009		3,562,000
TOTALS TOTALS	2010	529,334	1,598,534,000
	2009	536,209	1,452,970,000

“Connie began her career with Imperial County in 1984 when she was hired as a seasonal cotton pest trapper. A native of New York, she grew up in the Catskill Mountains surrounded by woods, hay fields and dairy cows. Working as a shepherd first brought her to the Imperial Valley, where she worked one winter as a sheep camp cook. At the end of the season, after walking into the Ag Commissioner’s office seeking work, she was hired to her “temporary” position that has now lasted more than 26 years.



Connie Valenzuela,
Imperial County Agriculture Commissioner

Over the years, Connie has worked her way up through the ranks at the Ag Commissioner’s Office serving as an Agricultural Biologist in every division of the department including standardization, apiary inspection, phytosanitary certification, pesticide use enforcement, weights & measures, and egg inspection. Connie has learned every aspect of the Ag Commissioner duties through hard work and dedication.”

Excerpt: Imperial County Farm Bureau Newsletter.





IMPERIAL COUNTY Livestock

CROP	YEAR	TOTAL HEAD	UNIT GAIN	TOTAL GAIN	UNIT	VALUE PER UNIT	GROSS VALUE
CATTLE (Feedlot)	2010	298,196	10.17	3,032,653	CWT	88.21	267,510,000
	2009	373,866	9.70	3,626,500	CWT	79.14	287,001,000
SHEEP (Feeders)	2010	130,000	0.33	42,900	CWT	103.06	4,421,000
	2009	140,000	0.40	56,000	CWT	97.77	5,475,000
WOOL	2010	130,000	4.00	520,000	LBS	0.67	348,000
	2009	140,000	3.17	443,800	LBS	0.36	160,000
AQUATIC PRODUCTS (Fish & Algae)	2010						6,492,000
	2009						13,393,000
MISC. LIVESTOCK (Calves, Cattle, Cavies, Dairy Animals, Goats, Lambs, Milk, Poultry, Rabbits & Swine)	2010						42,251,000
	2009						37,172,000
					VALUE 2010		321,022,000
					VALUE 2009		343,201,000

NUMBERS MAY NOT COMPUTE DUE TO ROUNDING



IMPERIAL COUNTY Field Crops

CROP	YEAR	ACRES	YIELD PER ACRE	TOTAL UNITS	UNIT	VALUE PER UNIT	GROSS VALUE
ALFALFA HAY (Baled)	2010	136,815	7.95	1,087,679.25	TON	118.81	129,227,000
	2009	112,912	7.02	792,642.24	TON	107.67	85,344,000
BERMUDAGRASS HAY	2010	48,726	7.01	341,569.26	TON	115.86	39,574,000
	2009	49,313	6.00	295,878.00	TON	110.23	32,615,000
COTTON (Lint)	2010	4,563	3.72 A	16,974.36	BALE	510.00	8,657,000
	2009	2,120	3.50 A	7,420.00	BALE	320.00	2,374,000
COTTON (Seed)	2010			6,525.00	TON	210.37	1,373,000
	2009			2,840.80	TON	183.25	521,000
KLEINGRASS HAY	2010	12,528	10.33	129,414.24	TON	103.33	13,372,000
	2009	14,129	10.50	148,354.50	TON	96.00	14,242,000
PASTURED CROPS	2010	79,576*			ACRE	41.99	3,341,000
	2009	74,783*			ACRE	38.69	2,893,000
BALED STRAW	2010			65,406.00	TON	38.30	2,505,000
	2009			53,498.00	TON	27.26	1,458,000
SUDANGRASS HAY	2010	59,403	5.93	352,259.79	TON	132.29	46,600,000
	2009	34,404	6.66	229,130.64	TON	121.84	27,917,000
SUGAR BEETS	2010	25,188	43.91	1,106,005.08	TON	63.38	70,099,000
	2009	18,022	45.20	814,594.40	TON	51.27	41,764,000
WHEAT	2010	58,562	3.79	221,949.98	TON	191.14	42,424,000
	2009	111,638	3.53	394,082.14	TON	248.33	97,862,000
MISC. FIELD CROPS	2010	6,031					2,967,000
	2009	10,590					5,564,000
TOTALS	2010	ACRES		351,816		VALUE	360,139,000
TOTALS	2009	ACRES		353,128		VALUE	312,554,000

NUMBERS MAY NOT COMPUTE DUE TO ROUNDING

MISC. FIELD CROPS = Barley Grain, Field Corn, Corn Silage, Flax, Mixed Grasses, Oat Hay, Ryegrass Hay, Safflower, Sorghum Grain, Sorghum Silage, Triticale Grain.

PASTURED CROPS = Alfalfa, Bermudagrass, Melons, Permanent Pasture, Ryegrass, Sudangrass and Sweet Corn

* = Pastured one time. Acres are not included in the Totals section

A = 500 lb. Bales

IMPERIAL COUNTY Vegetable & Melon Crops

CROP	YEAR	ACRES	YIELD PER ACRE	TOTAL UNITS	UNIT	VALUE PER UNIT	GROSS VALUE
BROCCOLI (Market)	2010	12,215	660	8,061,900	26 LB CTN	9.34	75,298,000
	2009	12,078	670	8,092,260	26 LB CTN	9.82	79,466,000
CABBAGE (Market)	2010	1,147	845	969,215	45 LB CTN	7.10	6,881,000
	2009	953	721	687,113	45 LB CTN	7.53	5,174,000
CARROTS (Market)	2010	5,001	850	4,250,850	50 LB BAG	8.12	34,517,000
	2009	5,675	853	4,840,775	50 LB BAG	5.74	27,786,000
Processing & Other	2010	7,502	44.00	330,088	TON	90.00	29,708,000
	2009	8,512	37.12	315,965	TON	85.00	26,857,000
TOTAL CARROTS	2010	12,503					64,225,000
	2009	14,187					54,643,000
CAULIFLOWER (Market)	2010	3,341	765	2,555,865	23 LB CTN	10.55	26,964,000
	2009	4,363	760	3,315,880	23 LB CTN	9.57	31,733,000
SWEET CORN	2010	10,523	397	4,177,631	50 LB CTN	9.20	38,434,000
	2009	8,030	425	3,412,750	50 LB CTN	10.20	34,810,000
HEAD LETTUCE Naked Pack	2010			990,048	50 LB CTN	8.26	8,178,000
	2009			1,081,357	50 LB CTN	8.72	9,429,000
Wrap Pack	2010			8,240,087	40 LB CTN	10.52	86,686,000
	2009			9,290,373	40 LB CTN	11.16	103,681,000
Bulk	2010			5,671,296	50 LB CTN	5.25*	29,774,000
	2009			6,397,504	50 LB CTN	5.25*	33,587,000
TOTAL HEAD LETTUCE	2010	19,657		14,901,431	CTN	8.36	124,638,000
	2009	21,873		16,769,234	CTN	8.75	146,697,000
LEAF LETTUCE	2010	14,138	958	13,544,204	35 LB CTN	12.26	166,052,000
	2009	14,271	950	13,557,450	35 LB CTN	8.55	115,916,000
SALAD PRODUCTS	2010			27,236,127	LB	0.39	10,622,000
	2009			30,092,638	LB	0.39	11,736,000
SPRING MIX	2010	5,673	7,000	39,711,000	LB	0.85	33,754,000
	2009	6,251	7,000	43,757,000	LB	0.85	37,193,000

NUMBERS MAY NOT COMPUTE DUE TO ROUNDING

*NET OF HARVEST, BINS and COOLING

**INCLUDED IN MISCELLANEOUS VEGETABLES

SPRING MIX = Various Green, Red, and Baby Leaf Lettuces, Arugula, Beet Tops, Chard, Endive, Frisee, Kale, Mizuna, Mustard, Orach, Romaine, Tat-Soi and Other Salad Greens.



IMPERIAL COUNTY Vegetable & Melon Crops

CROP	YEAR	ACRES	YIELD PER ACRE	TOTAL UNITS	UNIT	VALUE PER UNIT	GROSS VALUE
ONIONS							
Market	2010	3,392	1,200	4,070,400	50 LB SACK	16.00	65,126,000
	2009	3,788	1,500	5,682,000	50 LB SACK	4.70	26,705,000
Processor	2010	4,974	22.00	109,428	TON	100.00	10,943,000
	2009	6,180	21.68	133,982	TON	138.62	18,573,000
TOTAL ONIONS	2010	8,366					76,069,000
	2009	9,968					45,278,000
POTATOES	2010	1,347	258	347,526	CWT	34.08	11,844,000
	2009	1,432	196	280,672	CWT	40.44	11,350,000
SPINACH	2010	6,184	10,000	61,840,000	LB	0.33 *	20,407,000
	2009	4,210	9,000	37,890,000	LB	0.35 *	13,262,000
MISC. VEGETABLES	2010	9,934					80,217,000
	2009	7,660					56,004,000
CANTALOUPE	2010	7,795	740	5,768,300	40 LB CTN	9.30	53,645,000
	2009	6,843	730	4,995,390	40 LB CTN	7.07	35,317,000
HONEYDEW & MISC. MELONS	2010	1,041	753	783,873	40 LB CTN	8.78	6,882,000
	2009	693	954	661,122	40 LB CTN	6.61	4,370,000
WATERMELONS	2010	1,637	31.00	50,747	TON	260.00	13,194,000
	2009	1,287	26.00	33,462	TON	220.00	7,362,000
TOTALS 2010	ACRES	115,501				VALUE	809,126,000
TOTALS 2009	ACRES	114,099				VALUE	690,311,000

NUMBERS MAY NOT COMPUTE DUE TO ROUNDING

*NET OF HARVEST

MISC. VEGETABLES = Aloe Vera, Arugula, Artichokes, Asparagus, Beans, Black Eyed Beans, Beets, Bok Choy, Napa Cabbage, Celery, Chive, Chinese Spinach, Cilantro, Collard, Cucumber, Dandelion Greens, Eggplant, Endive, Fennel, Gai Lon, Herbs Mixed, Kale, Leek, Mizuna, Mustard Greens, Okra, Parsley, Parsnip, Peas, Peppers, Rapini, Rutabagas, Squash, Swiss Chard, Tomatoes and Turnips.



IMPERIAL COUNTY Fruit & Nut Crops

CROP	YEAR	ACRES	YIELD PER ACRE	TOTAL UNITS	UNIT	VALUE PER UNIT	GROSS VALUE
DATES							
Harvested	2010	1,151	3.33	3,832.83	TON	5,423.85	20,789,000
Non-Bearing	2010	340					
Harvested	2009	1,051	2.68	2,816.68	TON	6,337.00	17,849,000
GRAPEFRUIT							
Harvested	2010	838	4.65	3,896.70	TON	444.99	1,734,000
Non-Bearing	2010	230					
Harvested	2009	755	5.07	3,827.85	TON	406.70	1,557,000
LEMONS							
Harvested	2010	3,732	8.02	29,930.64	TON	657.89	19,691,000
Non-Bearing	2010	276					
Harvested	2009	3,335	10.54	35,150.90	TON	584.36	20,541,000
ORANGES (Valencia)							
Harvested	2010	116	4.00	464.00	TON	562.67	261,000
Non-Bearing	2010	89					
Harvested	2009	345	4.19	1,445.55	TON	369.60	534,000
TANGERINES							
Harvested	2010	185	5.17	956.45	TON	768.00	735,000
Non-Bearing	2010	0					
Harvested	2009	245	3.04	744.80	TON	848.80	632,000
MISC. CITRUS, FRUIT & NUT CROPS							
Harvested	2010	1,082	7.22	7,812.04	TON	890.50	6,957,000
Non-Bearing	2010	615					
Harvested	2009	1,014	4.81	4,877.34	TON	1,088.00	5,307,000
CITRUS BY-PRODUCTS							
	2010			14,183.76	TON	79.43	1,127,000
	2009			16,363.00	TON	82.17	1,345,000
TOTALS	2010	ACRES	7,104			VALUE	51,294,000
TOTALS	2009	ACRES	6,745			VALUE	47,765,000

NUMBERS MAY NOT COMPUTE DUE TO ROUNDING

MISC. CITRUS, FRUIT & NUT CROPS = Figs, Grapes, Jujube, Mandarins, Mangos, Tangelos.



IMPERIAL COUNTY Seed Crops & Nursery Products

NON-CERTIFIED SEED

CROP	YEAR	ACRES	YIELD PER ACRE	TOTAL UNITS	UNIT	VALUE PER UNIT	GROSS VALUE
ALFALFA SEED	2010	10,199	430	4,385,570	LBS	1.83	8,026,000
	2009	14,878	531	7,900,218	LBS	1.79	14,141,000
BERMUDAGRASS SEED	2010	19,485	306	5,962,410	LBS	2.23	13,296,000
	2009	18,487	284	5,250,308	LBS	1.41	7,403,000
ONION SEED	2010	1,535	225	345,375	LBS	26.11	9,018,000
	2009	1,197	200	239,400	LBS	27.50	6,584,000
MISC. FIELD, VEGETABLE & FLOWER SEED CROPS & NURSERY PRODUCTS	2010	865					2,993,000
	2009	246					4,203,000
TOTAL NON-CERTIFIED SEED 2010		ACRES		32,084		VALUE	33,333,000
TOTAL NON-CERTIFIED SEED 2009		ACRES		34,808		VALUE	32,331,000

CERTIFIED SEED

ALFALFA SEED	2010	14,070	487	6,852,090	LBS	2.08	14,252,000
	2009	18,092	561	10,149,612	LBS	1.72	17,457,000
BERMUDAGRASS SEED	2010	6,483	292	1,893,036	LBS	2.35	4,449,000
	2009	7,804	276	2,153,904	LBS	2.32	4,997,000
MISCELLANEOUS CERTIFIED SEED	2010	1,332					918,000
	2009	1,533					792,000
TOTAL CERTIFIED SEED 2010		ACRES		21,885		VALUE	19,619,000
TOTAL CERTIFIED SEED 2009		ACRES		27,429		VALUE	23,246,000
TOTAL SEED 2010		ACRES		53,969		VALUE	52,952,000
TOTAL SEED 2009		ACRES		62,237		VALUE	55,577,000

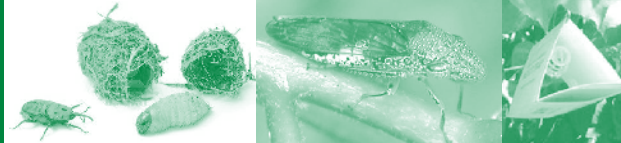
NUMBERS MAY NOT COMPUTE DUE TO ROUNDING
 MISC. FIELD, VEGETABLE AND FLOWER SEED CROPS
 AND NURSERY PRODUCTS = Cilantro, Corn, Cut Flowers, Forage Hay, Mustard, Palm Trees
 MISCELLANEOUS CERTIFIED SEED = Barley, Rape, Sudangrass and Wheat.

Apiary Products

CROP	YEAR	TOTAL HIVES	YIELD PER HIVE	TOTAL UNITS	UNIT	VALUE PER UNIT	GROSS VALUE
HONEY	2010	47,794	20.01	956,357.94	LBS	1.23	1,176,000
	2009	48,680	12.00	584,160.00	LBS	1.03	602,000
WAX	2010	30,886	0.56	17,296.16	LBS	2.00	35,000
	2009	44,528	0.37	16,475.36	LBS	1.68	28,000
POLLINATION	2010	61,409			COL	45.44	2,790,000
	2009	64,401			COL	45.53	2,932,000
VALUE 2010							4,001,000
VALUE 2009							3,562,000

NUMBERS MAY NOT COMPUTE DUE TO ROUNDING

IMPERIAL COUNTY Sustainable Agricultural Report



PEST DETECTION PROGRAM

TRAPPING

TARGET PEST	PEST DETECTION METHOD	NUMBER OF TRAPS	HOST CROPS
Asian Citrus Psyllid	Yellow Sticky Trap	220	Citrus
European Corn Borer	Pheromone	12	Corn & Sorghum
Various Exotic Fruit Flies	Feeding Attractant	95	Fruit Trees & Vegetables
Glassy-winged Sharpshooter	Yellow Sticky Trap	390	Crops & Ornamentals
Gypsy Moth	Pheromone	53	Shade Trees
Japanese Beetle	Pheromone	57	Turf & Flowers
Khapra Beetle	Feeding Attractant	29	Stored Food Products
Light Brown Apple Moth	Pheromone	235	Crops & Ornamentals
Mediterranean Fruit Fly	Pheromone	110	Fruit Trees
Melon Fruit Fly	Pheromone	108	Vegetables
Mexican Fruit Fly	Feeding Attractant	112	Fruit Trees
Oriental Fruit Fly	Pheromone	111	Fruit Trees
DF Moth	Pheromone	12	Ornamentals

SURVEY

TARGET PEST	SETTING	SCOPE OF PROGRAM
Asian Citrus Psyllid Survey	Commercial and Residential Citrus	7,259 Visual Surveys
Citrus Health Survey	Citrus Orchards	1,421 Acres
Noxious Weeds	Agriculture & Urban	145 Positive Sites; 1,168 Miles Surveyed
Karnal Bunt	Wheat	10 Sites
Red Imported Fire Ant	High Risk Sites	62 Sites
Pathogens of Concern for Export of Seed (by application only)	Seed Fields	197 Fields Surveyed
Glassy-winged Sharpshooter	Retail Nursery Stock Shipments	1905 Shipments Inspected
Glassy-winged Sharpshooter	Bulk Citrus Fruit	77 Shipments Inspected

BIOLOGICAL CONTROL

TARGET PEST	BIOCONTROL AGENT	SCOPE OF PROGRAM
Puncture Vine, Tribulus terrestris	Stem and seed weevils (<i>Microlarinus</i> spp)	42 sites
Puncture Vine, Tribulus terrestris	Hand/Mechanical Removal	21 sites

PEST EXCLUSION PROGRAM

PHYTOSANITARY CERTIFICATE

TYPE OF PHYTOCERTIFICATE	COMMODITY	CERTIFICATES ISSUED	DESTINATION
Domestic	Hay and Corn	13,460	South/Central America, Japan, Korea and Taiwan
Re-Export	Various	1,813	South/Central America, Japan, Korea and Taiwan
Process Product	Animal Feed	15	

QUARANTINE

TYPE OF CERTIFICATE	COMMODITY	CERTIFICATES ISSUED	DESTINATION
California State Phytos Quarantine Compliance	Hay, Produce and Seed Produce and Nursery Stock	724 270	Hawaii California Counties, Arizona, Florida, Nevada and Texas

INSPECTIONS

SEED	NUMBER OF LOTS	POUNDS	DESTINATION
Field Crops	648	20,455,505	US and Other Countries
Vegetable Crops	331	2,519,826	US and Other Countries
Seed Samples for Export Compliance	100		

TYPE OF INSPECTION	NUMBER OF INSPECTIONS	PEST	REJECTIONS
Bees for Pollination	15	Red Imported Fire Ant	0
Outdoor Furniture	1	Gypsy Moth	0
Sugar Cane	0	Root Borer & Weevil, Fungal	0

ORGANIC GROWER PROGRAM

STATISTICS

COMMODITY	NUMBER OF FARMS	ACREAGE	GROSS SALES
Fruits, Vegetables, Grains, Hay	26	6,612	\$36,161,000.00





IMPERIAL COUNTY Top Ten Commodities

2010 RANKING			2009 RANKING
1	CATTLE	\$267,510,000	1
2	LEAF LETTUCE	166,052,000	3
3	ALFALFA	129,227,000	5
4	HEAD LETTUCE	124,638,000	2
5	ONIONS	76,069,000	8
6	BROCCOLI	75,298,000	6
7	SUGAR BEETS	70,099,000	9
8	CARROTS	64,225,000	7
9	CANTALOUPE	53,645,000	13
10	SUDANGRASS	46,600,000	16

<http://co.imperial.ca.us/ag/clreports.htm>





Connie L. Valenzuela
Office Of Agricultural Commissioner
Sealer Of Weights and Measures
852 Broadway
El Centro, CA 92243-2850