



COUNTY OF RIVERSIDE

2003

AGRICULTURAL
PRODUCTION REPORT



JOHN SNYDER
Agricultural Commissioner
Sealer of Weights & Measures

OFFICE OF THE
AGRICULTURAL COMMISSIONER

P.O. BOX 1089
RIVERSIDE CA 92502-1089
PHONE (909) 955-3000
FAX (909) 955-3012

WEIGHTS & MEASURES OFFICE
P.O. BOX 1480
RIVERSIDE CA 92502-1480
PHONE (909) 955-3030
FAX (909) 276-4728

A.G. Kawamura, Secretary
California Department of Food and Agriculture

And

The Honorable Board of Supervisors of Riverside County

Roy Wilson, Chairman, District IV

Bob Buster, District I
John Tavaglione, District II

Jim Venable, District III
Marion Ashley, District V

I am pleased to submit the 2003 Agricultural Production Report for the acreage, yield, and gross valuation of agricultural crops and livestock in Riverside County.

This year's Agricultural Production Report represents a total gross valuation of \$1,067,367,300, which is an increase of \$3,889,200 (.4%) from the 2002 gross value. The gross value for agricultural crops was \$779,458,700, an increase of \$11,909,300 (1.5%) from the previous year. The value of livestock and poultry production was \$287,908,600, a decrease of \$8,020,100 (2.7%) from the 2002 value.

Significant for 2003 was Nursery stock production replacing Milk as the top crop valuation in the county. Nursery production value increased 12% last year to 205.8 Million, while Milk was down 10.4% to 204.1 Million. Other valuation changes included: Eggs up 22.3%, Avocados up 64.3%, Cotton up 52.1%, Table Grapes up 11.7%, Vegetables down 17% and Alfalfa down 17.4%.

It must be emphasized that this report reflects a gross return and in no way represents a measure of profit or loss to the producer. Leading agricultural economists agree that every dollar received by farmers in Riverside County in 2003, has the financial impact of three times that amount. Therefore, \$1,067,367,300 becomes more than \$3,202,101,900 revenue generated into the local economy.

I wish to express my sincere appreciation to the producers, processors, and agencies that have provided the information necessary for the compilation of this report. I would also like to express my gratitude to all the members of my staff for their contribution toward the preparation of this report.

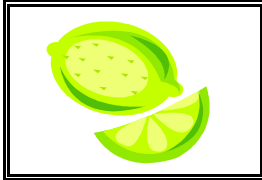
Respectfully submitted,

John Snyder

John Snyder
Agricultural Commissioner/
Sealer of Weights & Measures

TABLE OF CONTENTS

CITRUS CROPS	1
TREE AND VINE CROPS	2
VEGETABLE, MELON AND MISCELLANEOUS CROPS	3-5
FIELD AND SEED CROPS	5-6
LIVESTOCK AND POULTRY	7
LIVESTOCK AND POULTRY PRODUCTS	7
AQUACULTURE	7
NURSERY STOCK PRODUCTION	8
APICULTURE	8
SUMMARIES – TOTAL/DISTRICT VALUATIONS, ACREAGE STATISTICS	9
RIVERSIDE COUNTY LEADING AGRICULTURAL VALUATIONS	10
CALIFORNIA’S LEADING AGRICULTURAL VALUATION COUNTIES	10
COUNTY AGRICULTURAL PRODUCTION VALUES 1988-2003	11
NURSERY PRODUCTION VALUATION 1988-2003	12
MILLION DOLLAR COMMODITIES	13
CONTRIBUTION OF NURSERY PRODUCTION 1999-2003	14
TOTAL AGRICULTURAL PRODUCTION VALUATION 1999-2003	15
PHYTOSANITARY EXPORT CERTIFICATION	16
SUSTAINABLE AGRICULTURE REPORT	17
STAFF MEMBERS	18



CITRUS CROPS

	Year	Planted Acreage	Harvested Acreage	Production		Value		
				Per Acre	Total	Unit	Per Unit	Total
Grapefruit-Ruby	2003	4,953	4,943	948	4,685,964	34 lbs	5.84	27,366,000
By-Products	2003			281	1,388,983		0.35	486,100
Grapefruit-Ruby	2002	5,269	4,931	696	3,431,976	34 lbs	6.40	21,964,600
By-Products	2002			225	1,109,475		0.11	122,000
Grapefruit-White	2003	842	842	504	424,368	34 lbs	7.34	3,114,900
By-Products	2003			730	614,660		0.98	602,400
Grapefruit-White	2002	1,746	1,528	419	640,232	34 lbs	5.18	3,316,400
By-Products	2002			222	339,216		0.30	101,800
Lemons	2003	8,348	8,348	596	4,975,408	38 lbs	5.27	26,220,400
By-Products	2003			58	484,184		0.35	169,500
Lemons	2002	7,694	7,049	428	3,016,972	38 lbs	10.39	31,346,300
By-Products	2002			168	1,184,232		0.51	604,000
Miscellaneous*	2003	630	630	656	413,280	37.5 lbs	11.44	4,727,900
By-Products	2003			13	8,190	37.5 lbs	0.10	800
Miscellaneous**	2002	96	96	392	37,632	37.5 lbs	17.60	662,100
By-Products	2002					37.5 lbs		
Oranges-Navel	2003	3,460	3,460	503	1,740,380	37.5 lbs	5.68	9,885,400
By-Products	2003			351	1,214,460		0.63	765,100
Oranges-Navel	2002	5,919	3,793	461	1,748,573	37.5 lbs	9.72	16,996,100
By-Products	2002			283	1,073,419		0.30	322,000
Oranges-Valencia	2003	2,752	2,752	344	946,688	37.5 lbs	4.97	4,705,000
By-Products	2003			311	855,872		1.32	1,129,800
Oranges-Valencia	2002	6,582	3,758	311	1,168,738	37.5 lbs	8.20	9,583,700
By-Products	2002			331	1,243,898		0.85	1,057,300
Royal Mandarins	2003	102	102	468	47,736	37.5 lbs	11.41	544,700
By-Products	2003			29	2,958		5.00	14,800
Royal Mandarins	2002	300	300	402	120,600	37.5 lbs	6.08	733,200
By-Products	2002			173	51,900		0.33	17,100
Tangelos	2003	584	569	314	178,666	30 lbs	5.72	1,022,000
By-Products	2003			117	66,573		2.03	135,100
Tangelos	2002	704	319	307	97,933	30 lbs	7.93	776,600
By-Products	2002			27	8,613		0.34	2,900
Tangerines	2003	1,791	1,675	376	629,800	25 lbs	5.56	3,501,700
By-Products	2003			132	221,100		2.30	508,500
Tangerines	2002	1,508	1,390	652	906,280	25 lbs	8.29	7,513,100
By-Products	2002			291	404,490		0.70	283,100
TOTAL	2003	23,462	23,321					\$ 84,900,100
	2002	29,818	23,164					95,402,300

* Includes: Grapefruit (Oro Blanco, Rio Red, Star), Oranges (Blood), Kumquats, Limes

** Includes: Kumquats, Limes



TREE AND VINE CROPS

	Year	Planted Acreage	Harvested Acreage	Production		Value		
				Per Acre	Total	Unit	Per Unit	Total
Apples	2003	68	56	92	5,152	40 lbs	12.80	65,900
	2002	67	67	85	5,695		11.47	65,300
Apricots	2003	15	15	2	30	tons	1,200.00	36,000
	2002	Miscellaneous						
Avocados	2003	7,642	7,349	259	1,903,391	26 lbs	31.44	59,842,600
	2002	7,785	7,199	200	1,439,800		25.30	36,426,900
Cherries	2003	25	0	Crop Failure		18 lbs	0.00	-
	2002	31	27	80	2,160		36.00	77,800
Dates	2003	4,140	4,140	4.52	18,713	tons	1,950.00	36,490,000
Culls	2003			0.39	1,615		66.00	106,600
Dates	2002	5,940	3,440	4.14	14,242	tons	2,633.00	37,499,200
Culls	2002			0.36	1,238		66.00	81,700
Grapes - Table								
Beauty Seedless	2003	223	223	673	150,079	18 lbs	16.53	2,480,800
	2002	253	253	585	148,005		15.02	2,223,000
Exotic	2003	30	30	637	19,110	18 lbs	11.18	213,600
	2002	67	67	799	53,533		15.73	842,100
Flame Seedless	2003	5,274	5,274	753	3,971,322	18 lbs	14.25	56,591,300
	2002	5,883	5,883	675	3,971,025		12.87	51,107,100
Perlette	2003	2,600	2,600	560	1,456,000	18 lbs	13.37	19,466,700
	2002	3,081	3,081	516	1,589,796		12.19	19,379,600
Thompson Seedless	2003	1,865	1,865	739	1,378,235	18 lbs	15.68	21,610,700
	2002	1,860	1,860	638	1,186,680		14.52	17,230,600
Other Varieties	2003	1,353	1,353	780	1,055,340	18 lbs	14.76	15,576,800
	2002	1,415	1,415	652	922,580		14.15	13,054,500
HARVESTED TABLE GRAPE ACREAGE SUPPLIED BY CALIFORNIA DESERT GRAPE ADMINISTRATIVE COMMITTEE								
Grapes - Wine	2003	1,266	1,176	3.54	4,163	tons	784.00	3,263,800
	2002	1,288	1,250	4.16	5,200		676.54	3,518,000
Jojoba	2003	150	150	200.00	30,000	1 lbs	1.35	40,500
	2002	Miscellaneous						
Miscellaneous*	2003	440	70	350	24,500	24 lbs	23.50	575,800
	2002	686	465	158	73,470		18.79	1,380,500
Peaches - Freestone	2003	40	29	240	6,960	22 lbs	12.00	83,500
	2002	56	53	223	11,819		10.31	121,900
Pears	2003	19	19	180	3,420	22 lbs	11.00	37,600
	2002	Miscellaneous						
Persimmons	2003	25	25	371	9,275	24 lbs	9.06	84,000
	2002	39	39	383	14,937		8.75	130,700
TOTAL	2003	25,175	24,374				\$	216,566,200
	2002	28,451	25,099					183,138,900

* Includes: Jujubee, Mangoes, Nectarines, Plums, Walnuts. No Harvest (Figs, Olives)



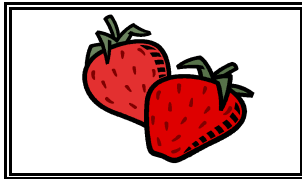
VEGETABLE, MELON & MISCELLANEOUS CROPS

	Year	Harvested Acreage	Production		Unit	Value	
			Per Acre	Total		Per Unit	Total
Artichokes	2003	671	754	505,934	23 lbs	10.53	5,327,500
	2002	798	594	474,012		9.65	4,574,200
Beans-Green	2003	845	488	412,360	28 lbs	15.76	6,498,800
	2002	464	364	168,896		15.93	2,690,500
Broccoli	2003	3,154	575	1,813,550	23 lbs	6.48	11,751,800
	2002	2,815	545	1,534,175		9.22	14,145,100
Cabbage	2003	65	753	48,945	50 lbs	4.97	243,300
	2002	295	547	161,365		4.69	756,800
Carrots	2003	1,641	810	1,329,210	48 lbs	6.82	9,065,200
	2002	2,763	1,058	2,923,254		5.46	15,961,000
Cauliflower	2003	928	852	790,656	23 lbs	7.12	5,629,500
	2002	872	830	723,760		9.32	6,745,400
Celery	2003	315	871	274,365	60 lbs	7.62	2,090,700
	2002	343	1,224	419,832		7.33	3,077,400
Corn-Sweet	2003	2,102	335	704,170	45 lbs	7.16	5,041,900
	2002	2,004	325	651,300		6.82	4,441,900
Eggplant	2003	208	738	153,504	20 lbs	10.58	1,624,100
	2002	190	1,051	199,690		8.29	1,655,400
Lettuce Head	2003	1,175	444	521,700	50 lbs	4.88	2,545,900
	2002	1,178	442	520,676		7.56	3,936,300
Head-Shredding, Bulk	2003		Misc.				
	2002	1,176	7.70	9,055		88.00	796,800
Loose Leaf	2003	2,214	948	2,098,872	22 lbs	6.33	13,285,900
	2002	2,368	1,065	2,521,920		10.48	26,429,700
Romaine	2003	2,067	827	1,709,409	35 lbs	7.16	12,239,400
	2002	1,741	897	1,561,677		10.83	16,913,000
Melons Cantaloupe	2003	2,486	548	1,362,328	40 lbs	6.85	9,331,900
	2002	3,015	474	1,429,110		5.57	7,960,100
Honeydew	2003	1,508	703	1,060,124	29 lbs	5.64	5,979,100
	2002	1,235	660	815,100		4.72	3,847,300



VEGETABLE, MELON & MISCELLANEOUS CROPS

	Year	Harvested Acreage	Production		Unit	Value	
			Per Acre	Total		Per Unit	Total
Melons							
Miscellaneous	2003	865	510	441,150	33 lbs	6.76	2,982,200
	2002	1,231	366	450,546		6.55	2,951,100
Watermelon	2003	1,681	22	36,982	tons	188.00	6,952,600
	2002	1,874	27	51,160		234.22	11,982,700
By-Products	2003	3,250	1	2,410	tons	220.00	530,200
Miscellaneous*	2003	1,406	445	625,670	28 lbs	4.51	2,821,800
	2002	1,493	580	865,940		8.88	7,689,500
Mushrooms	2003	3	18,330	54,990	1 lbs	2.43	133,600
Okra	2003	73	397	28,981	20 lbs	14.00	405,700
	2002	163	786	128,118		10.00	1,281,200
Onions-Dry	2003	289	624	180,336	50 lbs	11.00	1,983,700
	2002	553	1,043	576,779		6.14	3,541,400
Oriental Vegetables	2003	973	1,124	1,093,652	28 lbs	13.39	14,644,000
	2002	1,343	1,066	1,431,638		9.41	13,471,700
Peppers							
Bell	2003	2,715	1,132	3,073,380	30 lbs	10.80	33,192,500
	2002	2,402	1,261	3,028,922		9.97	30,198,400
Chili	2003		Misc.				
	2002	95	1,681	159,695		2.25	359,300
Potatoes							
Fall	2003	1,534	287	440,258	100 lbs	6.55	2,883,700
	2002	982	298	292,636		14.94	4,372,000
Spring	2003	825	258	212,850	100 lbs	17.63	3,752,500
	2002	1,692	265	448,380		16.51	7,402,800
Pumpkins	2003	179	12	2,148	tons	155.25	333,500
	2002	187	15	2,880		158.41	456,200
Radishes	2003	97	707	68,579	35 lbs	9.45	648,100
	2002		Misc.				
Spices	2003	519	84	43,596	28 lbs	70.00	3,051,700
	2002		Misc.				
Spinach	2003	575	1,091	627,325	30 lbs	8.08	5,068,800
	2002	1,125	1,100	1,237,500		7.93	9,813,400



VEGETABLE, MELON & MISCELLANEOUS CROPS

	Year	Harvested Acreage	Production		Unit	Value	
			Per Acre	Total		Per Unit	Total
Squash							
Summer	2003	286	7	1,988	tons	588.00	1,168,800
	2002	376	705	265,080	28 lbs	6.28	1,664,700
Winter	2003		Misc.				
	2002	70	604	42,280		8.78	371,200
Strawberries	2003	304	1,410	427,935	12 lbs	11.50	4,921,300
	2002	236	1,501	354,236		10.23	3,623,800
Tomatoes	2003	263	1,675	440,525	20 lbs	6.52	2,872,200
	2002	281	1,458	409,698		5.62	2,303,500
TOTAL	2003	35,216				\$	179,001,900
	2002	35,360					215,412,800

* Includes: Beets, Endive, Escarole, Garlic, Lettuce-Bulk Shred, Melons-Crenshaw, Onions-Green, Parsley, Peas, Squash-Banana, Squash-Butternut, Other (Riverside, Coachella Districts)



FIELD AND SEED CROPS

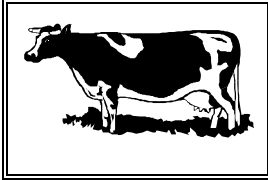
	Year	Harvested Acreage	Production		Unit	Value	
			Per Acre	Total		Per Unit	Total
Cotton							
Short Staple	2003	13,139	3.30	43,359	500 lbs	310.00	13,441,200
	2002	9,091	3.24	29,455		300.00	8,836,500
Seed	2003		1.32	17,343	tons	130.00	2,254,600
	2002		1.22	11,091		130.00	1,441,800
Grain							
Barley	2003	402	2.33	937	tons	114.00	106,800
	2002	216	2.45	529		103.41	54,700
Milo Maize	2003		None		tons		
	2002	332	2.00	664		101.00	67,100
Oat	2003	415	0.95	394	tons	92.00	36,300
	2002	No harvest due to drought					
Wheat	2003	26,987	1.84	49,656	tons	140.00	6,951,900
	2002	5,727	3.00	17,181		135.00	2,319,400
Hay							
Alfalfa	2003	55,558	8.70	483,355	tons	80.50	38,910,000
	2002	58,379	8.80	513,735		91.75	47,135,200
Barley	2003	2,250	2.06	4,635	tons	107.00	495,900
	2002	1,017	1.00	1,017		90.00	91,500
Bermuda Grass	2003	1,779	5.50	9,785	tons	80.00	782,800
	2002	1,481	6.60	9,775		80.00	782,000



FIELD AND SEED CROPS

	Year	Harvested Acreage	Production		Unit	Value	
			Per Acre	Total		Per Unit	Total
Hay							
Klein Grass	2003	2,288	9.50	21,736	tons	87.00	1,891,000
	2002	2,421	9.00	21,789		86.00	1,873,900
Oat	2003	2,208	2.74	6,050	tons	105.00	635,200
	2002	1,238	1.82	2,253		96.99	218,500
Sudan	2003	1,491	5.20	7,753	tons	98.00	759,800
	2002	1,347	4.60	6,196		81.00	501,900
Straw-Other	2003	1,007	1.80	1,813	tons	38.00	68,900
	2002	567	1.50	851		30.00	25,500
Timothy Grass	2003	514	3.70	1,902	tons	200.00	380,400
	2002		Misc.				
Miscellaneous*	2003	1,115	1.20	1,338	tons	169.00	226,100
	2002	1,800	13.74	24,732		39.05	965,800
Pasture-Irrigated	2003	15,550		15,550	acres	122.00	1,897,100
	2002	15,500		15,500		122.00	1,891,000
Rangeland	2003	40,000		40,000	acres	5.00	200,000
	2002	40,000		40,000		0.00	-
Silage and Green Chop							
Alfalfa	2003	1,720	31.70	54,524	tons	28.40	1,548,500
	2002	4,256	28.85	122,786		28.67	3,520,300
Barley	2003	345	4.51	1,556	tons	16.00	24,900
	2002	1,430	8.46	12,098		20.07	242,800
Corn	2003	1,488	21.50	31,992	tons	30.20	966,200
	2002	1,744	23.15	40,374		29.31	1,183,400
Oat	2003	508	7.00	3,556	tons	16.00	56,900
	2002		None				
Sorghum	2003	305	17.70	5,399	tons	23.00	124,200
	2002		Misc.				
Sudan	2003	20	20.00	400	tons	15.00	6,000
	2002	90	16.67	1,500		21.80	32,700
Wheat	2003	6,311	10.30	65,003	tons	21.00	1,365,100
	2002		Misc.				
Seed							
Bermuda Grass	2003	1,178	314.00	369,892	lbs	1.52	562,200
	2002	1,029	503.00	517,587		1.50	776,400
TOTAL	2003	176,578				\$	73,692,000
	2002	147,665					71,960,400

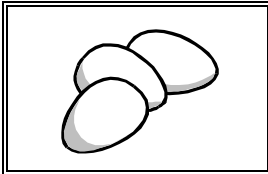
* Includes: Hay-4 Way, Peanuts-Seed, Peanuts-Straw, Safflower



LIVESTOCK AND POULTRY

	Year	Number of Head	Total Liveweight	Unit	Value	
					Per Unit	Total
Cattle and Calves	2003	2,600	20,100	cwt	38.00	763,800
	2002	10,000	50,000		50.00	2,500,000
Sheep and Lambs	2003	77,100	96,700	cwt	87.00	8,412,900
	2002	59,000	67,180		66.02	4,435,200
Other Livestock*	2003	35,000	350	cwt	440.00	154,000
	2002	260,000	18,200		6.60	120,100
TOTAL	2003				\$	9,330,700
	2002					7,055,300

*Ducks, Hogs, Rabbits, Squab, Gamebirds



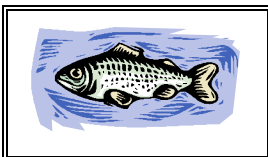
LIVESTOCK AND POULTRY PRODUCTS

	Year	Production	Unit	Value		
				Per Unit	Total	
Eggs*	2003	125,532,000	dozen	0.59	74,063,900	
	2002	140,800,000		0.43	60,544,000	
Milk**	2003	17,023,245	cwt	11.99	204,108,700	
	2002	18,907,000		12.05	227,829,400	
Other Products***	2003				405,300	
	2002				500,000	
TOTAL	2003				\$	278,577,900
	2002					288,873,400

*Information Supplied by: University of California Cooperative Extension Services.

**Information Supplied by: California Agricultural Statistics Service.

***Hides, Manure, and Wool.



AQUACULTURE

	Year	Production	Unit	Value		
				Per Unit	Total	
Carp	2003	200,523	lbs	2.24	449,200	
Catfish	2003	923,344	lbs	1.87	1,726,700	
Miscellaneous*	2003	3,828,800	lbs	2.73	10,452,600	
Tilapia	2003	1,572,914	lbs	2.10	3,303,100	
Total	2003	6,525,581			\$	15,931,600
	2002	7,407,983				15,757,600

* Includes Bass, Goldfish, Trout



NURSERY STOCK PRODUCTION

	Year	Acres	Production	Unit	Valuation
Ornamental Nursery Stock	2003	3,582	19,776,153	various	146,039,600
	2002	2,730	16,158,792		133,088,900
Cut Flowers and Cut Greens	2003	353	2,656,100	cuttings	1,649,900
	2002	293	2,405,000		1,475,700
Christmas Trees (cut)	2003	24	4,522	each	162,700
	2002	121	3,068		96,900
Turf	2003	3,552	149,615,325	square feet	30,731,100
	2002	3,509	202,170,720		43,800,000
Farm Planting Stock	2003	100	1,862,500	various	27,263,000
	2002	83	583,500		4,612,100
TOTAL	2003	7,611			\$ 205,846,300
	2002	6,736			183,073,600



APICULTURE

	Year	Production	Unit	Value	
				Per Unit	Total
Honey	2003	1,909,200	lbs	1.25	2,386,500
	2002	1,900,000		1.05	1,995,000
Beeswax	2003	31,820	lbs	1.00	31,800
	2002	47,000		1.00	47,000
Queen Cells	2003	3,000	queens	1.50	4,500
	2002	1,200		1.50	1,800
Fees Collected for Pollination	2003	28,700	colonies	38.25	1,097,800
	2002	20,000		38.00	760,000
Total Colonies	1998	31,820			
	2002	21,000			
TOTAL	2003				\$ 3,520,600
	2002				2,803,800

DISTRICT VALUATIONS - AGRICULTURAL CROPS

District	1999	2000	2001	2002	2003
Riverside/Corona	\$ 31,464,000	\$ 31,203,800	\$ 49,707,800	\$ 84,200,000	\$ 97,390,900
San Jacinto/Temecula Valley	94,443,000	102,293,100	138,802,600	145,426,200	164,934,800
Coachella Valley	427,605,600	324,729,300	450,695,100	425,631,400	405,575,900
Palo Verde Valley	90,393,100	93,876,000	99,073,100	93,716,800	91,978,200
Total Crop Valuation	643,905,700	552,102,200	738,278,600	748,974,400	759,879,800

ACREAGE STATISTICS

Crop	1999	2000	2001	2002	2003
Citrus	30,757	30,653	30,011	29,818	23,462
Tree and Vine	29,942	28,405	26,538	28,451	25,175
Vegetable, Melons, Misc.	48,008	45,405	41,738	35,360	35,216
Field and Seed	210,463	163,861	187,045	147,665	176,578
Total Planted Acreage	319,170	268,324	285,332	241,294	260,431

TOTAL VALUATION - F.O.B.

Crop	1999	2000	2001	2002	2003
Citrus	\$118,236,100	\$114,572,900	\$130,221,100	\$95,402,300	\$84,900,100
Tree and Vine	224,383,600	177,390,100	191,579,100	183,138,900	216,566,200
Vegetable, Melons, Misc.	238,001,400	193,720,100	196,785,100	215,412,800	179,001,900
Field and Seed	64,554,300	66,921,500	80,215,900	71,960,400	73,692,000
Nursery	90,377,000	107,520,300	138,371,300	183,073,600	205,846,300
Apiculture	5,572,000	4,269,200	4,740,000	2,803,800	3,520,600
Aquaculture	16,006,800	17,174,700	15,412,400	15,757,600	15,931,600
Total Crop	757,131,200	681,568,800	757,324,900	767,549,400	779,458,700
Livestock and Poultry	440,230,900	366,992,800	367,583,500	295,928,700	287,908,600
GRAND TOTAL	1,197,362,100	1,048,561,600	1,124,908,400	1,063,478,100	1,067,367,300

RIVERSIDE COUNTY LEADING AGRICULTURAL VALUATIONS

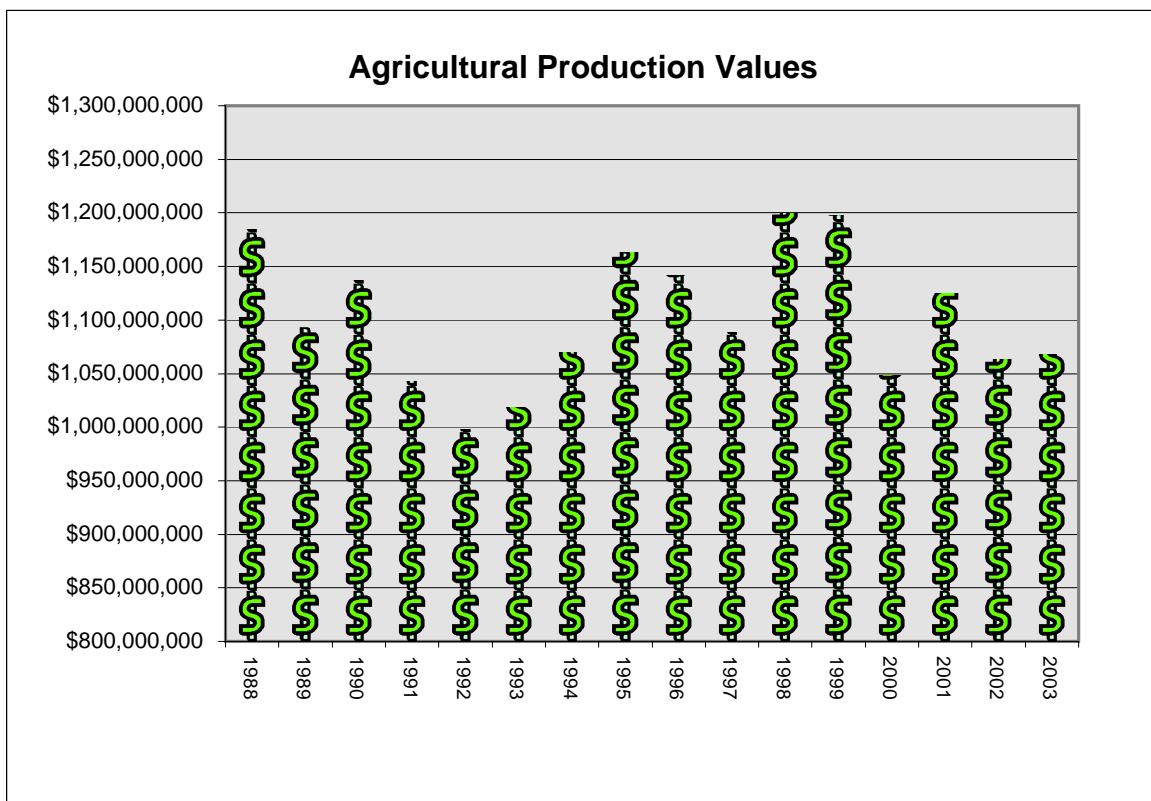
<u>2002</u>		<u>2003</u>		
1	Milk	\$ 227,829,400	1 Nursery	\$ 205,846,300
2	Nursery	183,073,600	2 Milk	204,108,700
3	Grapes, Table	103,836,900	3 Grapes, Table	115,939,900
4	Eggs	60,544,000	4 Eggs	74,063,900
5	Hay, all	50,757,900	5 Avocados	59,842,600
6	Dates	37,580,900	6 Hay, all	43,924,000
7	Avocados	36,426,900	7 Dates	36,596,600
8	Lemons	31,950,300	8 Peppers, Bell	33,192,500
9	Peppers, Bell	30,198,400	9 Grapefruit, all	31,569,400
10	Lettuce, Loose Leaf	26,429,700	10 Lemons	26,389,900
11	Grapefruit, All	25,504,800	11 Melons, all	25,776,000
12	Oranges, Navel	17,318,100	12 Aquaculture	15,931,600
13	Lettuce, Romaine	16,913,000	13 Cotton, all	15,695,800
14	Carrots	15,961,000	14 Oriental Vegetables	14,644,000
15	Aquaculture Products	15,757,600	15 Lettuce, Loose Leaf	13,285,900
16	Broccoli	14,145,100	16 Lettuce, Romaine	12,239,400
17	Oriental Vegetables	13,471,700	17 Broccoli	11,751,800
18	Watermelons	11,982,700	18 Oranges, Navel	10,650,500
19	Potatoes	11,774,800	19 Carrots	9,331,900
20	Oranges, Valencia	10,641,000	20 Sheep & Lambs	8,412,900

CALIFORNIA'S LEADING AGRICULTURAL COUNTIES BY TOTAL VALUE OF PRODUCTION

<u>RANK</u>	<u>2000</u>		<u>2001</u>		<u>2002</u>	
	<u>COUNTY</u>	<u>VALUE</u>	<u>COUNTY</u>	<u>VALUE</u>	<u>COUNTY</u>	<u>VALUE</u>
1	Fresno	3,425,926,000	Tulare	3,493,010,000	Fresno	3,418,788,000
2	Tulare	3,068,063,000	Fresno	3,218,681,000	Tulare	3,201,722,000
3	Monterey	2,923,393,000	Monterey	2,746,251,000	Monterey	2,812,073,000
4	Kern	2,213,200,000	Kern	2,254,322,000	Kern	2,586,437,000
5	Merced	1,538,545,000	Merced	1,703,044,000	Merced	1,730,726,000
6	San Joaquin	1,348,724,000	San Joaquin	1,389,889,000	Stanislaus	1,367,971,000
7	San Diego	1,254,389,000	Stanislaus	1,353,300,000	San Joaquin	1,343,818,000
8	Stanislaus	1,197,302,000	San Diego	1,289,708,000	San Diego	1,297,280,000
9	Riverside	1,048,590,000	Riverside	1,124,929,000	Imperial	1,224,109,000
10	Ventura	1,047,128,000	Ventura	1,053,714,000	Ventura	1,161,139,000
11					Riverside	1,063,521,000

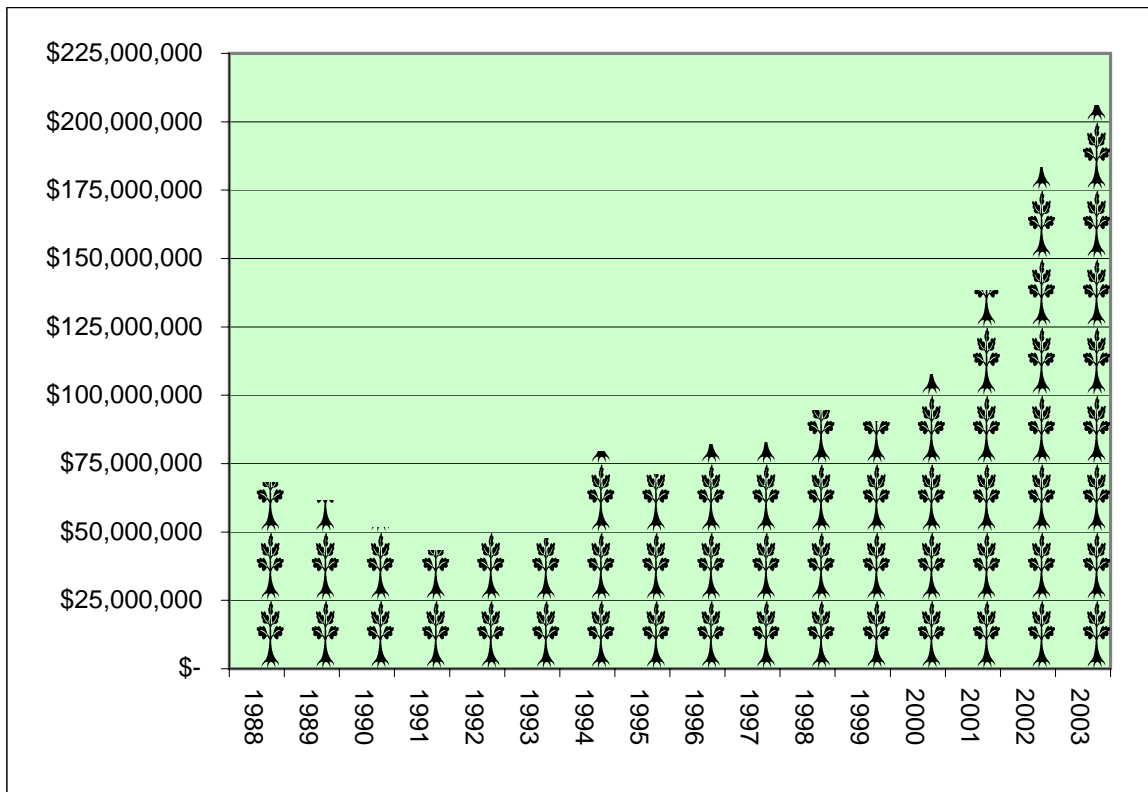
RIVERSIDE COUNTY AGRICULTURAL PRODUCTION VALUES 1988-2003

<u>YEAR</u>	<u>VALUE</u>	<u>STATE RANK</u>
1988	\$1,184,000,300	4
1989	\$1,092,781,100	5
1990	\$1,137,174,100	5
1991	\$1,042,326,900	6
1992	\$997,653,500	7
1993	\$1,018,641,000	9
1994	\$1,069,323,000	8
1995	\$1,163,430,300	7
1996	\$1,141,819,800	8
1997	\$1,087,920,000	9
1998	\$1,199,506,700	8
1999	\$1,197,362,000	9
2000	\$1,048,561,600	9
2001	\$1,124,908,400	9
2002	\$1,063,478,000	11
2003	\$1,067,367,300	



NURSERY PRODUCTION VALUATION 1988-2003

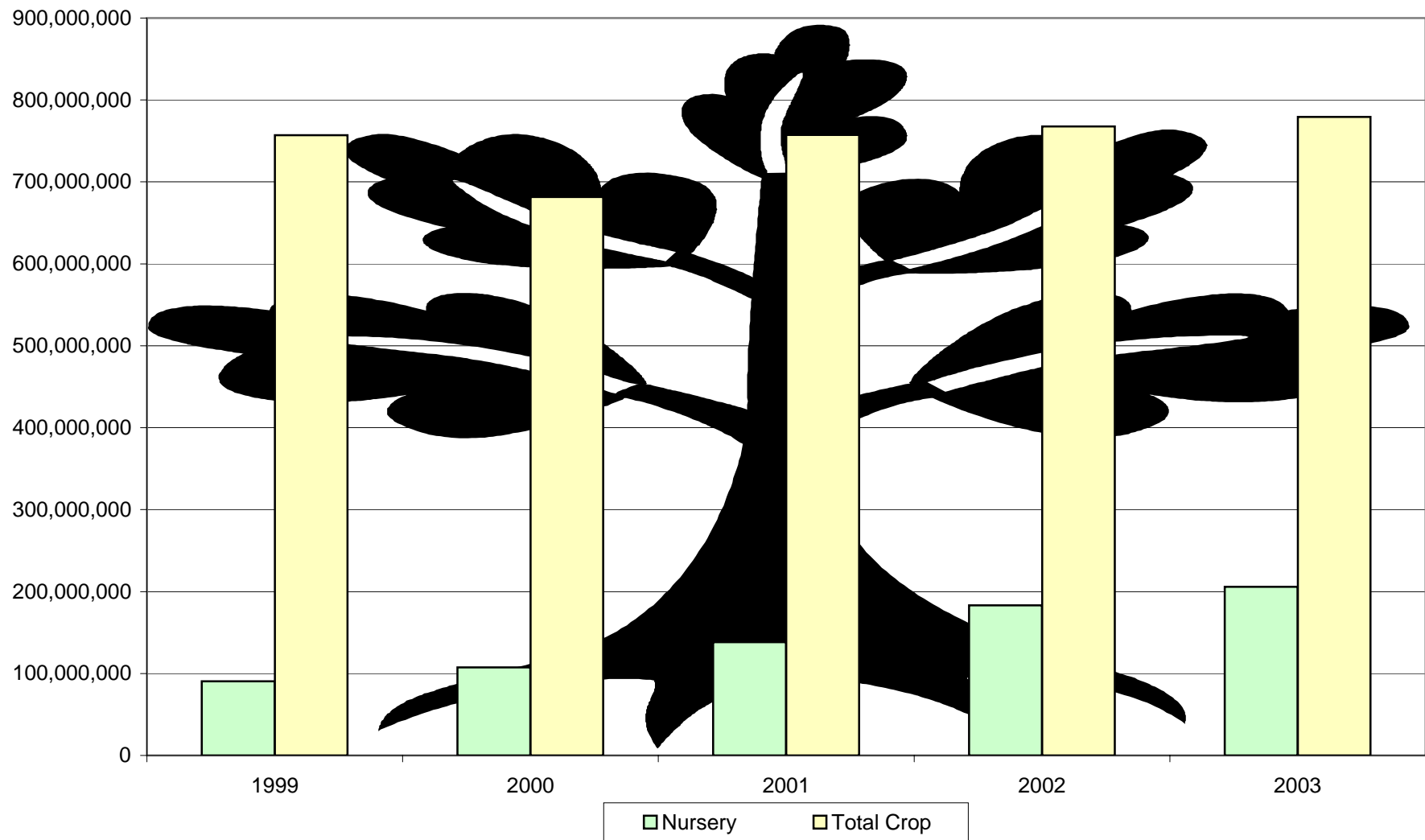
<u>Year</u>	<u>Value</u>	<u>Acres</u>	<u>County Rank</u>	<u>% Total Value</u>
1988	68,231,600	2,961	4	5.8
1989	61,579,400	3,598	4	5.6
1990	51,531,900	2,298	6	4.5
1991	43,144,600	2,112	7	4.1
1992	50,256,700	1,768	5	5.0
1993	47,550,700	2,594	7	4.5
1994	79,537,200	3,678	3	7.4
1995	71,169,100	3,590	4	6.1
1996	81,942,600	3,829	4	7.2
1997	82,827,400	4,355	4	7.6
1998	94,549,900	5,346	3	7.9
1999	90,377,000	4,517	3	7.5
2000	107,520,300	5,685	2	10.3
2001	138,371,300	6,330	2	12.3
2002	183,073,600	6,736	2	17.2
2003	205,846,300	7,611	1	19.3



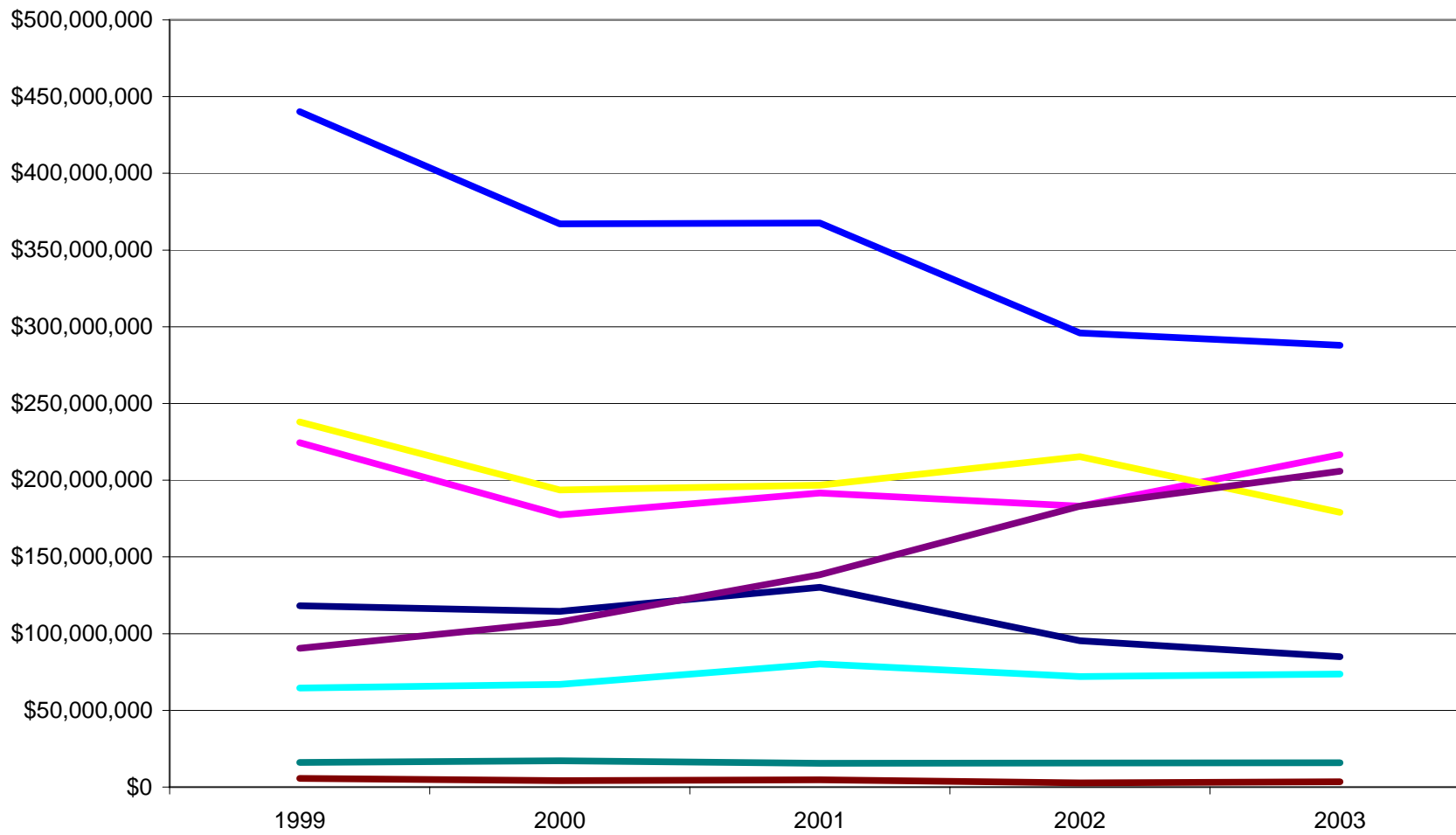
2003 Million Dollar Commodities

<u>Rank</u>	<u>Commodity</u>	<u>Value</u>
1	Nursery	205,846,300
2	Milk	204,108,700
3	Grapes, Table	115,939,900
4	Eggs	74,063,900
5	Avocados	59,842,600
6	Hay, all	43,924,000
7	Dates	36,596,600
8	Peppers, Bell	33,192,500
9	Grapefruit, all	31,569,400
10	Lemons	26,389,900
11	Melons, all	25,776,000
12	Aquaculture	15,931,600
13	Cotton, all	15,695,800
14	Oriental Vegetables	14,644,000
15	Lettuce, Loose Leaf	13,285,900
16	Lettuce, Romaine	12,239,400
17	Broccoli	11,751,800
18	Oranges, Navel	10,650,500
19	Melons, Canteloupe	9,331,900
20	Carrots	9,065,200
21	Sheep & Lambs	8,412,900
22	Grain, all	7,095,000
23	Watermelons	6,952,600
24	Potatoes	6,636,200
25	Beans, Green	6,498,800
26	Melons, Honeydew	5,979,100
27	Oranges, Valencia	5,834,800
28	Tangerines, all	5,726,800
29	Cauliflower	5,629,500
30	Artichokes	5,327,500
31	Spinach	5,068,800
32	Corn, Sweet	5,041,900
33	Strawberries	4,921,300
34	Citrus, misc.	4,728,700
35	Forage/Fodder, all	4,091,800
36	Apiculture	3,520,600
37	Grapes, Wine	3,263,800
38	Spices	3,051,700
39	Melons, misc.	2,982,200
40	Tomatoes, mkt.	2,872,200
41	Lettuce, Head	2,545,900
42	Celery	2,090,700
43	Onions, Dry	1,983,700
44	Pasture, irrigated	1,897,100
45	Eggplant	1,624,100
46	Squash, Summer	1,168,800

Contribution of Nursery Production to Overall Crop Value 1999-2003



Total Agricultural Production Valuation 1999-2003



■ Citrus
 ■ Tree and Vine
 ■ Vegetable, Melons, Misc.
 ■ Field and Seed
 ■ Nursery
 ■ Apiculture
 ■ Aquaculture
 ■ Livestock and Poultry

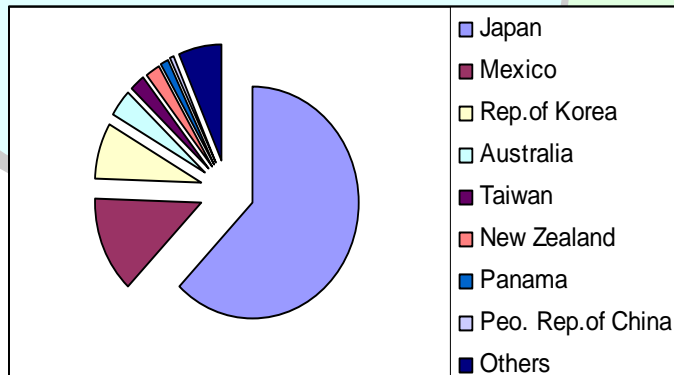
PHYTOSANITARY EXPORT CERTIFICATION – 2003

Export Countries

Australia	El Salvador	Malaysia	Singapore
Austria	France	Mexico	Spain
Bahamas	Germany	Morocco	Sri Lanka
Bangladesh	Ghana	Netherlands	St. Lucia
Belgium	Guatemala	New Zealand	Suriname
Belize	Honduras	No. Mariana Islands	Switzerland
Burkina Faso	India	Oman	Taiwan
Canada	Indonesia	Panama	Thailand
Chile	Italy	People's Rep. of China	Trinidad & Tobago
Colombia	Jamaica	Peru	Turkey
Costa Rica	Japan	Philippines	United Arab Emirates
Dominican Republic	Kuwait	Republic of Korea	United Kingdom
Ecuador	Lebanon	Saudi Arabia	Vietnam

Commodities Certified

Alfalfa Hay	Celery	Date Palm Offshoots	Onion Seed
Artichokes	Celery Seedlings	Dates	Peppers
Avocados	Citrus Budwood	Dried Flowers	Pepper Seedlings
Bean Seed	Citrus Fruit	Eggplant Seedlings	Radish Seeds
Broccoli	Citrus Leaves	Grapes	Watermelons
Cantaloupes	Citrus Seedlings	Honeydew Melons	
Carrots	Corn	Lettuce	
Cauliflower	Cottonseed	Mangos	
Cauliflower Seedlings	Cottonseed Hulls	Nursery Stock	



SUSTAINABLE AGRICULTURE

ORGANIC FARMING

81 Organic producers registered in Riverside County.

PEST DETECTION (Commercial and Urban)

<u>Activity</u>	<u>Hours</u>
Commercial Crops	181.0
Public Contact	36.5
Special Surveys:	
Tristeza (Residential)	28.0
Citrus Leaf Miner	64.5
Scientific Evaluation Trapping	1222.6
Red Imported Fire Ant	8882.5
Citrus Tristeza Indexing (Coachella Valley)	<u>Numbers</u>
Commercial	
Properties tested	51
Acres sampled	1106
Samples tested biochemically	7034
“Positive” samples	0
Residential	
Properties tested	100
Trees surveyed	100
Samples tested biochemically	100
“Positive” samples	1

PEST DETECTION (Exotic Insects)

<u>Pest</u>	<u>Trap Servicings</u>
European Corn Borer	180
Gypsy Moth	49
Khapra Beetle	74
Medfly (Grapes, Citrus)	3,686

PEST EXCLUSION (Incoming plant shipments)

<u>Units profiled</u>	<u>Units inspected</u>	<u>Rejections</u>
2,938	1,713	24

PEST ABATEMENT

<u>Pest</u>	<u>Properties</u>
California Red Scale	4
Sting Nematode	8
Citrus Tristeza Virus	1
Glassy-winged sharpshooter	1
Abandoned vineyard	2

BIOLOGICAL CONTROL OF WEEDS

<u>Pest</u>	<u>Control Agent</u>
Yellow starthistle	<i>Bangasternus orientalis</i> <i>Eustenopus villosus</i>

BIOLOGICAL CONTROL OF INSECTS AND SNAILS

<u>Pest</u>	<u>Control Agent</u>
Black scale	<i>Metaphycus elvulus</i>
Brown soft scale	<i>Metaphycus uteolus</i>
California red scale	<i>Aphytis melinus</i>
Citrus mealybug	<i>Cryptolaemus montrouzieri</i>
Cottony cushion scale	<i>Encarsia sp.</i> <i>Cryptochaetum iceryae</i>
Eucalyptus longhorned borer	<i>Avetianella longoi</i> <i>Jarra phoracantha</i>
Mosquitoes	<i>Syngaster lepidus</i> <i>Aedes vexans</i> <i>Culex quinquefasciatus</i> <i>Bacillus thur. israelensis</i> <i>Culex tarsalis</i> <i>Gambusia affinis</i> <i>Psorophora columbiae</i> <i>Psytalia concolor</i>
Olive Fruit fly	<i>Galendromus annectens</i>
Persea mite	<i>Galendromus helveolus</i> <i>Galendromus pilosus</i> <i>Psyllaephagus bliteus</i>
Red gum lerp psyllid	<i>Phytoseiulus persimilis</i>
Two spotted spider mite	<i>Galendromus occidentalis</i> <i>Cryptolaemus montrouzieri</i>
Vine mealybug	<i>Ametadoria harrisinae</i>
Western grapeleaf skeletonizer	<i>Apanteles harrisinae</i>
Woolly whitefly	<i>Amitus spiniferus</i> <i>Cales noacki</i>
Brown garden snail	<i>Rumina decollata</i>

OTHER

Enforcement of County ordinances to control Lettuce Mosaic Virus, agricultural grading, land application of manure and biosolids, cotton plowdown, blowing dust, and beekeeping.

STAFF MEMBERS – 2003

Agricultural Commissioner/Sealer of Weights and Measures

John Snyder

Assistant Agricultural Commissioner

Dustin Wiley

Deputy Agricultural Commissioners/Sealers

Bill Oesterlein

Bill Tracy

Vacant (2)

Supervising Agricultural & Standards Investigators

Don Domenigoni

Bob Mulherin

Gursewak Sidhu

Sue Weber

Agricultural & Standards Investigators

Rick Allert
Jennifer Chandler
Dia Elseewi
Tom Finan
Julius Francisco
Erin Freeman
Dean Gottlieb
Charles Hardesty

Tom Hought
Charles Kregl
Michael Lahti
Stuart Lease
Arturo Lomeli
Debbie May
Dennis Miller

Victor Miranda
Keith Selnick
Richard Shaffer
Hugo Soto
Michele Tracy
Lily Vargas
Tom Vizthum
Lena Wages

Weights and Measures Inspector

Doug Simmons

Agricultural Inspectors

Steve Bennett
Mike Dishman
Laura Doughty

Brad Eldridge
James Holland
Steve Oliver

Angel Orozco
Mike Madiel
Gene White

Clerical Support Staff

Camille Alexen
Debbie Boyer
Elisa Monteil
Cynthia Ramos

Billie Seale
Johanna Starks
Patrice Wyatt